



Contents

1. Hardware and Software requirements	4
1.1 Hardware requirements	4
1.2 Software requirements	4
2. Installation	4
3. Fundamental concepts	4
3.1 General push buttons to select the functions	5
3.2 New project	6
3.3 Open project	6
3.4 Receive the configuration	8
3.5 Update firmware	9
3.6 Selecting the software language	9
3.7 Connecting the device to a PC	10
4. Main screen	11
4.1 Available Elements area	11
4.2 Display area	12
4.3 The Element property area	14
5. Project configuration	15
5.1 Home Page	15
5.2 Communication - Available functions and their configuration	16
5.3 Home automation - Available functions and their configuration	17
5.4 Advanced - Available functions and their configuration	20
5.5 System configuration	21
5.6 Project management	21
6. Design creation procedure	22

1. Hardware and Software requirements



Warning: the TiLivingLightDisplay software is the fundamental tool for the configuration of the Video Display 344400/344401, which, for convenience, will be referred to as device in this manual. The content of this software is protected by exclusive rights owned by the company BTicino SpA.

1.1 Hardware requirements

- 512 MB of RAM memory.
- SVGA graphic card with 800x600 resolution.
- CD-ROM reader.
- Mouse.

1.2 Software requirements

- Windows XP, Vista, 7.
- Microsoft™ framework.NET 3.5 SP1.

The updated requirements can be found on the www.bticino.com website

2. Installation

To install the TiLivingLightDisplay program proceed as described:

1. Put the CD-Rom in its drive.
2. After the main page is displayed in the web format select "Install TiLivingLightDisplay".
3. At this point the installation program will copy the system files needed to run the TiLivingLightDisplay program.

3. Fundamental concepts



Warning: For correct TiLivingLightDisplay software operation, the device must be installed following the instructions contained in the instruction leaflet supplied with the product.

The TiLivingLightDisplay software lets you configure the device.

Depending on the installer and user's needs you can start with a new project or edit an existing one. In this manual all the examples refer to a "new project".

To create a new project

- Run TiLivingLightDisplay.
- Make a new project.
- Send the data to the device

To edit an existing design

- Receive the current configuration data from the device.
- Make any modifications.
- Send the data of the design made to the device

With TiLivingLightDisplay you can update the device firmware version (Add firmware) with new revisions issued by BTicino.

3.1 General push buttons to select the functions

The functions which TiLivingLightDisplay can perform:

- Open project.
- New project.
- Select software language.
- Receive the configuration.
- Update firmware.

They can be selected by clicking on the icons in the opening screen.



Navigation bar



The navigation bar, made up of the following commands, can be found at the bottom of every page:

- **?**: supplies information on the software being used:
 - Information on: the program name and version
 - Versions supported: indicates the compatibility of the version in use both in relation to previous versions of the same software and with the device firmware.
- **Cancel**: can return to the main page. You will be asked to confirm and possibly save the configurations of the current design;
- **Save**: can save the configurations of the current design even if they are incomplete;
- **Back**: returns to the previous page. If you are in the "Home Page Configuration" it will return to the main page after a request for confirmation, because the operation would result in the loss of the configurations;
- **Next**: goes to the next page;
- **Close**: quits the program and if necessary saves the configurations of the current design;

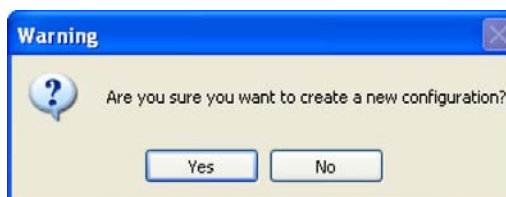
When the commands are in grey this means that they are not available in the current page

3.2 New project

Can create a new project.

Press the "New project" key.

Appears:



Click on the YES push button

The first design page appears:



3.3 Open project

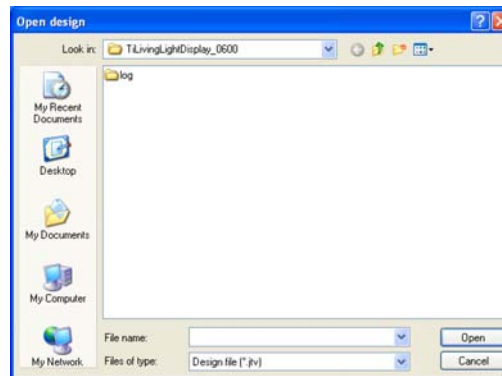
Can load a previously produced design which was later filed on the PC in the TiLivingLightDisplay program

At this point the design can be:

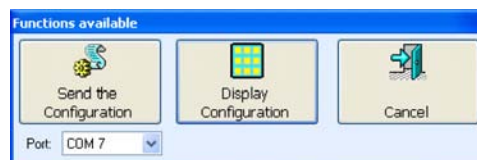
- Edited and saved on the PC (ready for a later Download).
- Edited and then sent to the device
- Sent to the device without being modified.

Press the “Open project” key.

Appears:



If the design is complete the window appears:



Click **Send the Configuration** to send the configuration to the device, or **Display Configuration** to display the project.

When clicking **Display Configuration**, the configuration summary page appears. When clicking **Cancel**, the Home Page configuration page appears.



From now on the loaded design can be edited.
The editing modes are described in the corresponding chapters.

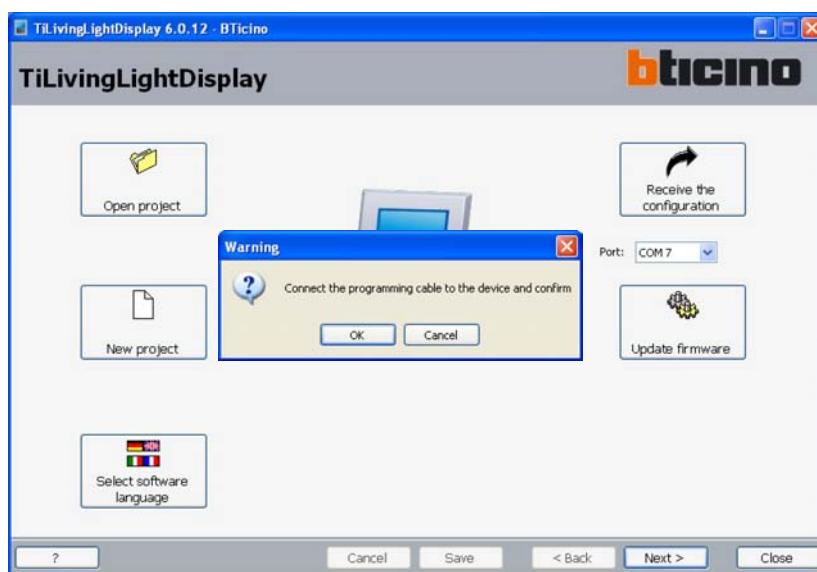
3.4 Receive the configuration

Lets you receive the current device configuration importing it on a PC for editing.

Execution:

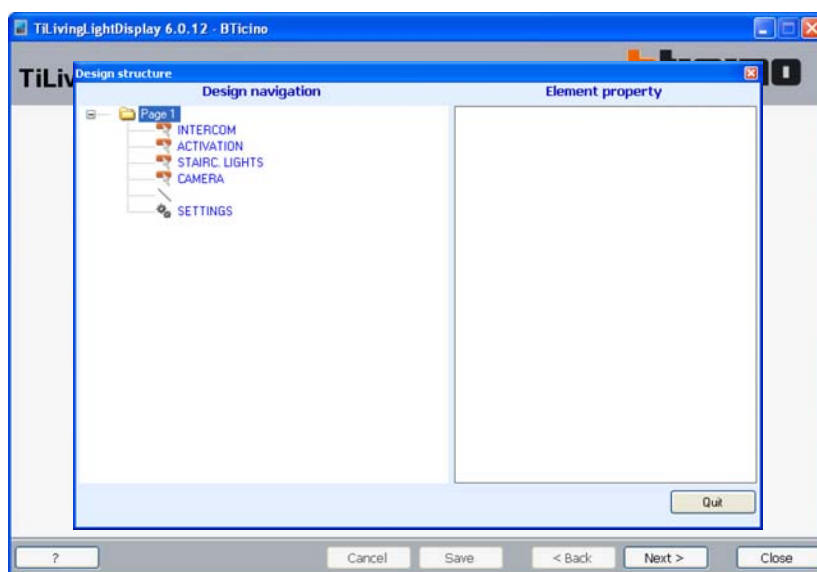
- Connect the device to a PC as shown in the corresponding section.
- Click on the “Receive the configuration” push button.

Appears:



After connecting the cable press **OK** to continue.
The program puts the PC in communication with the device.
Wait, the operation may take a few seconds.

Appears:



Once the configuration has been received it can be edited with the procedure described in the corresponding chapters.

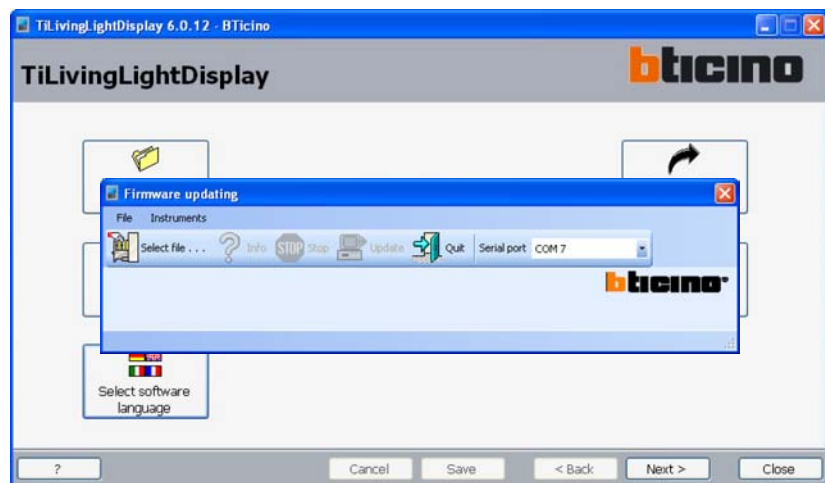
3.5 Update firmware

Lets you update the device firmware.

Execution:

- Connect the device to a PC as shown in the corresponding section.
- Click on the **"Update firmware"** push button.

The Update firmware program window appears which is used to download the firmware in the device



- Click on the program's **select file** icon and select the **.fwz** file to be installed.
- Click on the **Info** push button for information on the differences between the new firmware and the previous versions.
- Click on update to download.

3.6 Selecting the software language

This can select the TiLivingLightDisplay software language of use.

On clicking on the **"Software language selection"** push button the following screen appears:



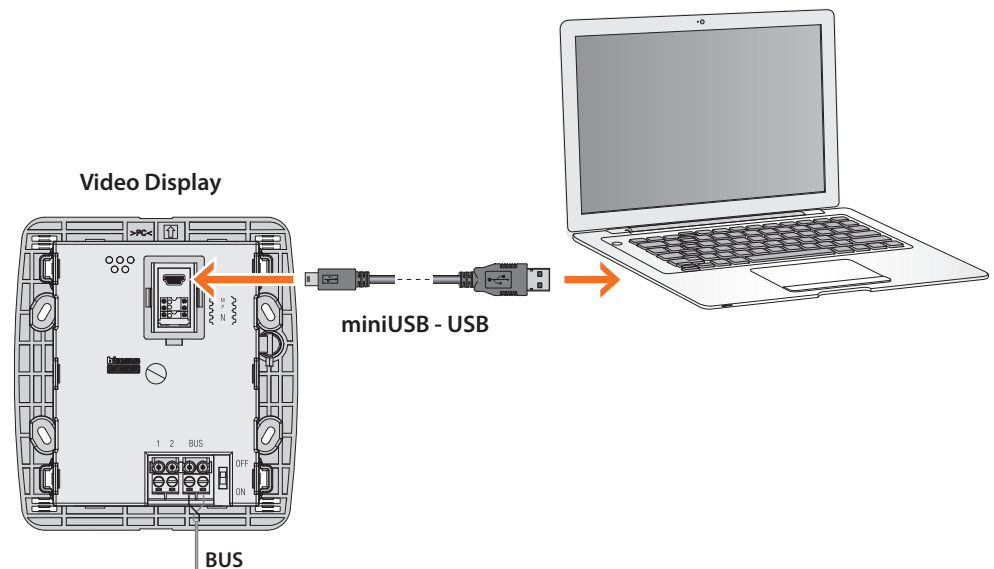
If you do not want to change the software language click on the **Cancel** push button.

If you want to change the language, select the language required by clicking on the button corresponding to it and then press the **Confirm** push button.

3.7 Connecting the device to a PC

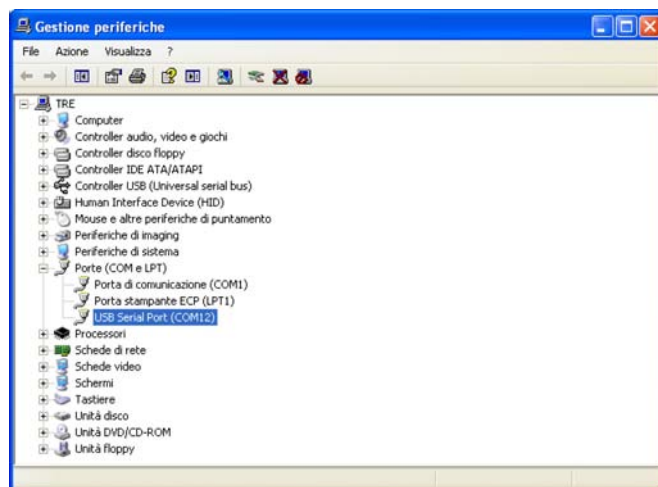
To “Send the configuration”, “Receive the configuration” and “Update firmware” first of all the device must be connected to a PC, making sure that the correct port has been selected. The operation should be performed as indicated below:

Use a USB cable, connecting it between the device’s miniUSB connector and the PC’s USB port.



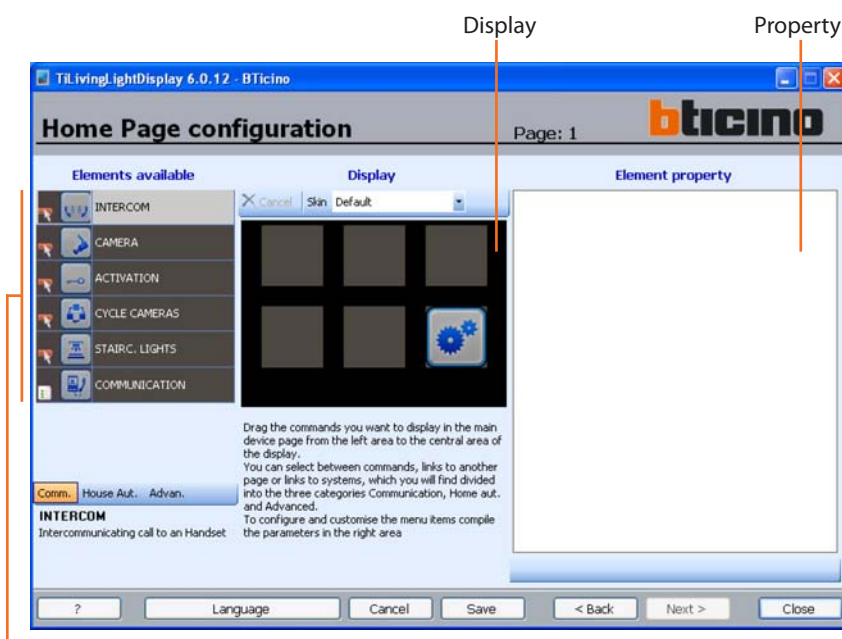
The device must be connected to the BUS and switched ON for the communication to take place. The **New project** and **Open project** functions can be used without connecting the PC to the device.

The device connected using an USB cable is recognised by the PC as a virtual port (VIRTUAL COM). To know the number of the COM port assigned to the device open the Device Manager application from “Control Panel/System/Hardware”.



4. Main screen

When a new project is created, or an existing one is opened, the main screen is displayed:



Elements available

The page is divided into three frames:

- The **Elements available** area, at the left, contains the available functions.
- The **Display** area, in the centre, shows the screen which will be displayed on the device.
- The **Element property** area, at the right, where the names can be customised and the parameters for the various functions entered.

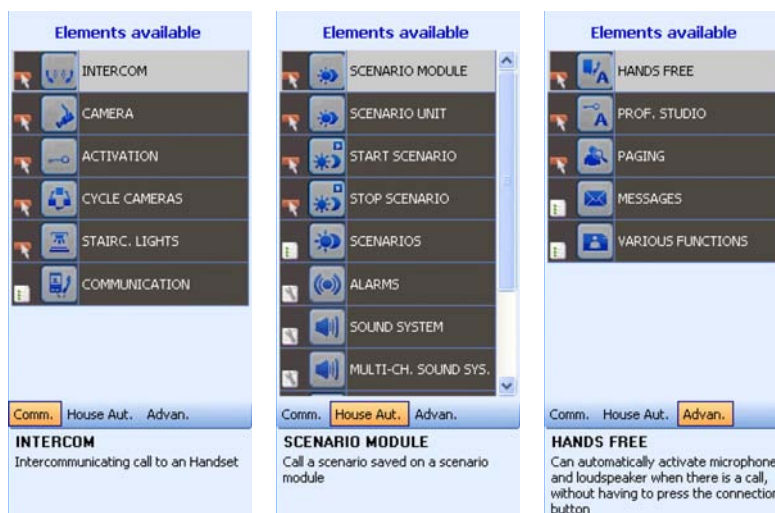
4.1 Available Elements area

In this area the user can select the objects that will be included in the pages and sub-pages of the device.

The objects are split into the following categories, based on their functions:

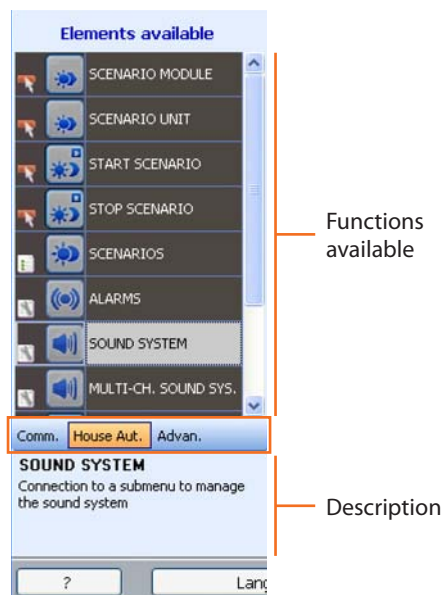
- **Communication**
- **Home automation**
- **Advanced.**

Click the corresponding label to make the category objects available.



The full list of the available objects and their configurations can be found in the relevant sections, while the modes of use are described in the **Home Page** section.

When a function is selected, a short description appears in the bottom window of the area.

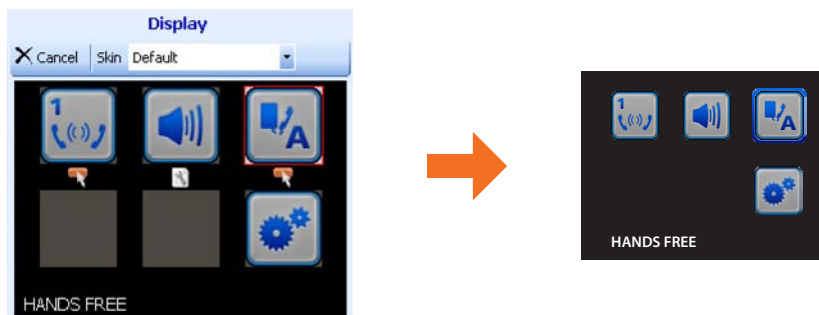


To enter a function in the design just click on it and, keeping the mouse key pressed, drag it to the **Display area**.

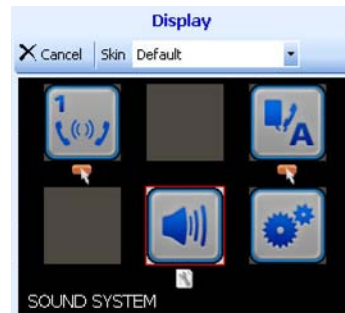
4.2 Display area

The Display area shows the future setup of the device Home Page.

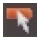


This page consists of 6 icons. The first 5 can be customised. The last one is the Settings icon (which cannot be customised or removed).



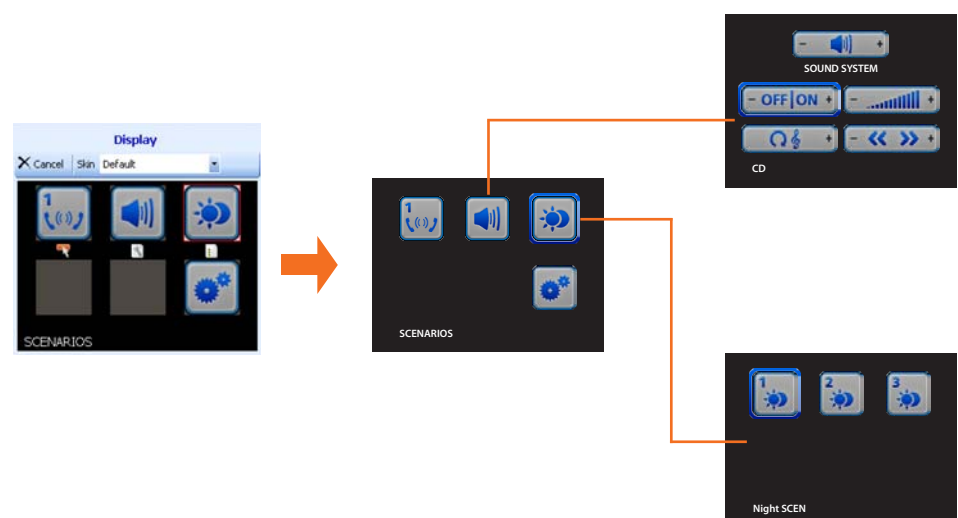
To continue with the configuration enter at least one function.
There is no need to configure all the lines. Also, if you want to enter, for example, only three functions, they can be placed where you like without having to use the lines from top to bottom.



Three types of function can be entered in the main page, the icon next to them indicates the type:

-  Single function
-  Connection to a page; if necessary, the configuration will have to be performed in the subsequent project stages (see scenario example).
-  Connection to a page; if the configuration is required it must be made directly in this screen (see sound system example).

If  or , functions are entered, the device menu will be made up on two levels:



To cancel a Display area function click on it and then on the **Cancel** key.

4.3 The Element property area

All the functions dragged into the Display area must be configured.

After selecting the function the parameters to be configured will appear in the Element property area.

In this case the "Description" field can be renamed to make it more intuitive (e.g. "call kitchen" instead of Intercom).

Element property	
Function	
Intercom type	Internal
Inside or outside the apartment	
Configuration	
Description	INTERCOM
Description of the selected item	
Handset address	01
Address of the Handset to call	

Parameters to be configured

5. Project configuration

The configuration of a project may be completed in different ways, for example by creating a totally new project, and uploading it on the device, or, after acquiring, and if necessary modifying, the configuration of the device, by saving the project in the PC and exporting it to the device at a later stage. It is also possible to export a project in .csv format, and then import it in Microsoft Excel ®.

5.1 Home Page

Using the Home Page, it is possible to create the device Menu. To do so, drag the objects from the "Elements available" area into the "Display" area, and configure them in the "Element property" area.



Sub-pages

Some objects are used for connection to other pages, where correlated objects are grouped together (e.g. Scenarios).



5.2 Communication - Available functions and their configuration

This group includes the objects of the basic door entry system functions.

Object description

Intercom



Conversation with other system handsets

Camera cycling



Cyclical activation of the system cameras

Camera



Camera activation

Staircase lights



Staircase light switching on

Activation



Release of a door lock

Communication



Connection to a page where the user can include communication specific objects

Configuration



Element property	
Configuration	
Description	STAIRC. LIGHTS
Description of the selected item	

Enter the description



Element property	
Function	
Camera type	Internal
Inside or outside the apartment	
Configuration	
Description	CAMERA
Description of the selected item	
Address	00
Address of a Camera or a video EP	

Select external if the object is installed on the public riser, and an apartment interface is present

Enter the description

Enter the address:

- Camera
- Camera from which cycling should start
- Handset with which to communicate
- Lock to open

5.3 Home automation - Available functions and their configuration

This group includes the objects of the home automation functions.

Object description

Scenario module



Activation of the scenario saved in a scenario module

Scenario central unit



Activation of the scenarios saved in a scenario central unit

Start scheduled scen.



Execution of a scenario saved in a scenario programmer

Stop scheduled scen.



Interruption of a scenario saved in a scenario programmer

Scenarios



Connection to a page where to insert scenario objects

Alarms



Information on the status of the burglar alarm system

Sound system



Sound system management

Multichannel sound system



Multichannel sound system management

Multimedia interface



Connection to the multimedia interface page

Temp. control 99 zones



Temperature control system management (up to 99 zones)

Temp. control 4 zones



Temperature control system management (up to 4 zones)

Configuration

Alarms



Element property

General data

Configuration

Description: ALARMS

Description of the selected item

Zones

Zone 1

Description: Zone 1

Description of Zone 1

Presence: Yes

Presence of the Zone

Zone 2

Description: Zone 2

Description of Zone 2

Presence: Yes

Presence of the Zone

Zone 3

Description: Zone 3

Description of Zone 3

Element property

Auxiliaries

Auxiliary 1

Description: Alarm

Description of auxiliary channel 1

Type: Gas leak

Typology of auxiliary channel

Presence: Yes

Presence of the Auxiliary

Auxiliary 2

Description: Alarm

Description of auxiliary channel 2

Type: Freezer

Typology of auxiliary channel

Presence: Yes

Presence of the Auxiliary

Auxiliary 3

Description: Alarm

Description of auxiliary channel 3

Type: Flood

Enter the zone
description

Zone
presence

Enter the auxiliary
channel description

Type of
auxiliary channel

Auxiliary channel presence

Scenarios



Element property	
Configuration	
Description	SCENARIO MODULE
Description of the selected item	
Conf. A-PL	01
A-PL address of the scenario unit	
Level	L3
SCS apartment branch on which the unit is installed (L3: private riser, L4: local bus)	
Scenario No.	1
Number of the scenario (1-16) inside the unit	

Enter the address of the module or the scenario central unit

Scenario no.



Element property	
Configuration	
Description	START SCENARIO
Description of the selected item	
Conf. A-PL	01
A-PL address of the scenario unit	
Level	L3
SCS apartment branch on which the unit is installed (L3: private riser, L4: local bus)	
Scenario No.	1
Scenario number (0-31)	

Enter the description

Enter the CEN control address

Scenario no.

Sound system



Element property	
General data	
Configuration	
Description	SOUND SYSTEM
Description of the selected item	
Sources	
Source 1	
Description	
Description of the source	
Address	Source 1
Source address	
Amplifiers	
Amplifier 1	
Description	
Description of the amplifier or set of amplifiers	
Conf. A-PF	Sound point 01
Address of the amplifier or set of amplifiers	
<div> + New Source + New Amplifier X Cancel </div>	

Enter the page description

Enter the source description

Select the source address

Enter the amplifier description

Select the amplifier address

Add a new source

Add a new amplifier

Multimedia interface



Element property

Configuration

Description	MULTIMEDIA INTER.
Description of the selected item	
Interface address	1
Multimedia interface address	

Enter the description of the multimedia interface

Select the address of the multimedia interface

Temperature control



99 zones

Element property

General data

Configuration

Description	TEMPERATURE CONTROL
Description to display for the Temperature control item	

Zones

Zone 1

Description	
Description of the temperature control zone	
Zone	01
Address of the temperature control zone	

Zone 2

Description	
Description of the temperature control zone	
Zone	01
Address of the temperature control zone	

+ New Zone X Cancel

Enter the page description

Enter the zone description

Select the zone address

Add a new zone

4 zones

Element property

General data

Configuration

Description	TEMP.CONTROL 4 ZONES
Description to show for the item Temperature control 4 zones	

Control units

Control unit 1

Description	CONTROL UNIT 1
Description for the control unit	
Zone	01
Address of the control unit	
Zone (02)	<input checked="" type="checkbox"/> ZONE 2
Zone (03)	<input checked="" type="checkbox"/> ZONE 3
Zone (04)	<input checked="" type="checkbox"/> ZONE 4
Description and selection of the associated zones	

+ New control unit X Cancel

Enter the page description

Control unit description

Select the control unit address

Zone description

Add a new control unit

☒ Zone presence
☒ Zone absence

5.4 Advanced - Available functions and their configuration

This group includes the objects of the advanced door entry system functions.

Object description

Hands-free



Automatic activation of microphone and speaker following an entrance panel call

Professional studio



Automatic door lock opening following a call from the entrance panel

Paging



Broadcasts the voice of the speaker across the whole system

Messages



Switchboard message management

Various functions



Connection to a sub-page where to include frequently used objects

Configuration

To configure the "Advanced" objects simply enter a description with the exception of the "Paging" function, for which the address must also be entered.



Element property	
Configuration	
Description	VARIOUS FUNCTIONS
Description of the selected item	

Enter a description

Paging



Element property	
Configuration	
Description	PAGING
Description of the selected item	
Mode	Basic
Paging mode	
Conf. A-PF	00
Address of the amplifier or set of amplifiers	

Enter a description

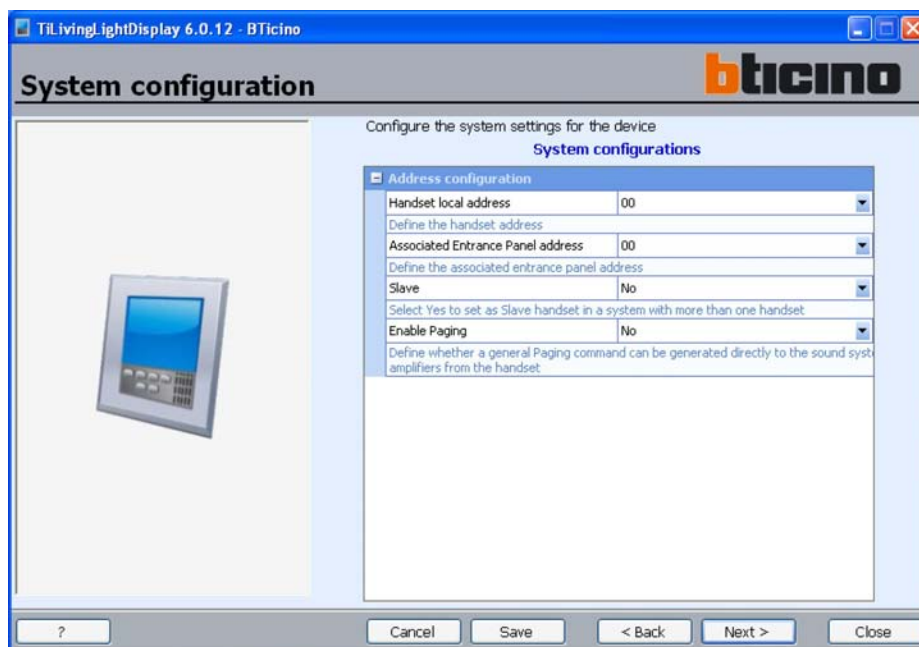
Select Basic or Advanced mode*

Select the amplifier address (A-PF, general, room)

* When Basic mode is selected, the voice is only broadcasted through the speakers of the sound system, when Advanced mode is selected, the voice is also broadcasted through the preset handsfree handsets.

5.5 System configuration

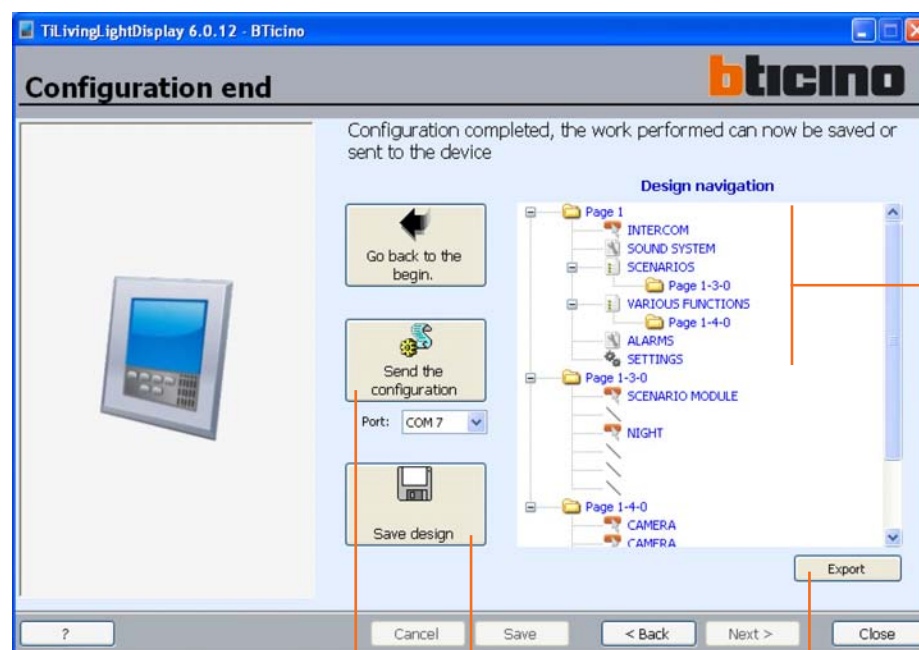
After inserting the objects needed for the project, click **Next >** to configure the device system settings.



5.6 Project management

The project has now been configured. It is now possible to save it, export it, or send it directly to the device.

Project tree structure



Send the configuration to the device

Save the project

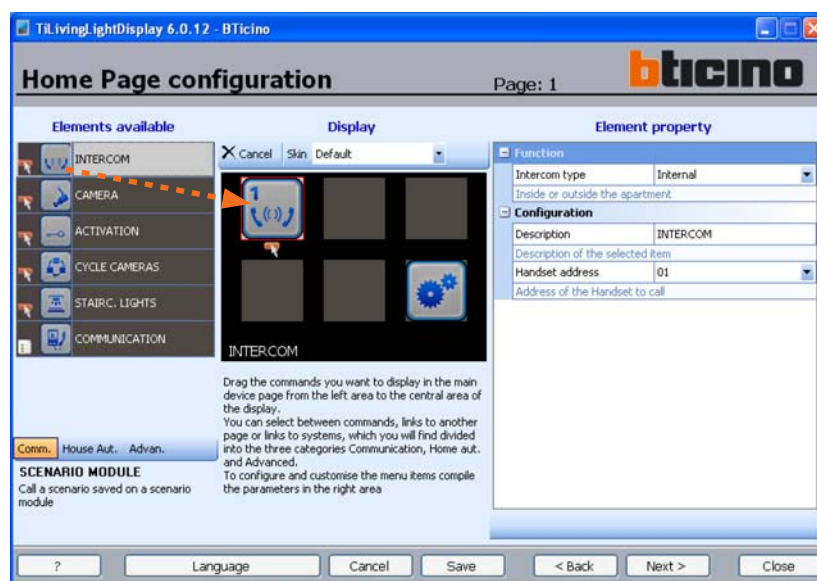
Export the project (.csv file)

6. Design creation procedure

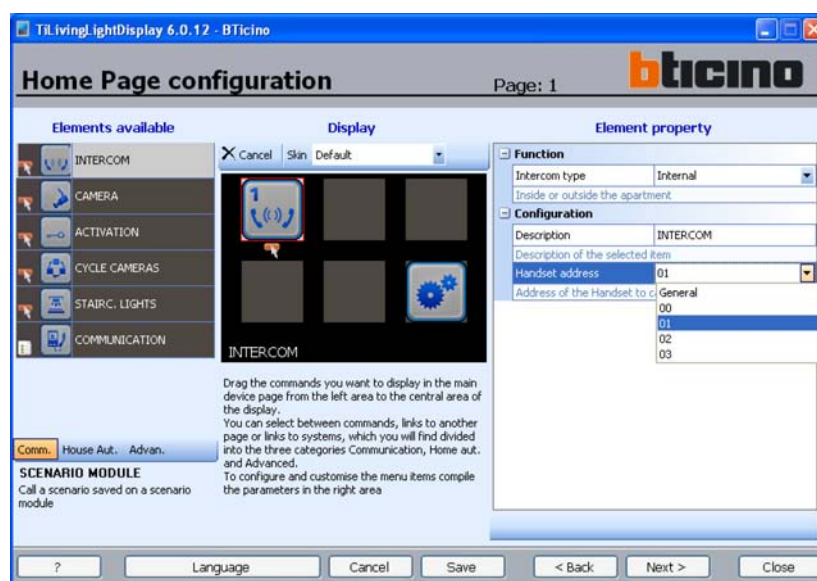
This chapter presents a design example; the example is for programming the Intercom, Sound System, Scenario and Alarm functions. These functions have been chosen because they represent the various possible configuration types.

1st Passage

Drag the Intercom function inside the Display area.

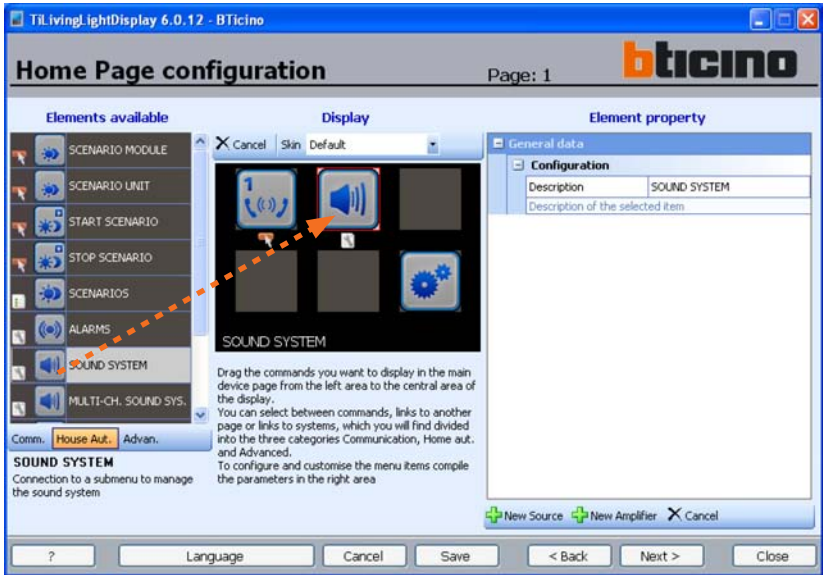



In the Element parameters area configure the address of the Handset to which the call refers and if you want customise the description.

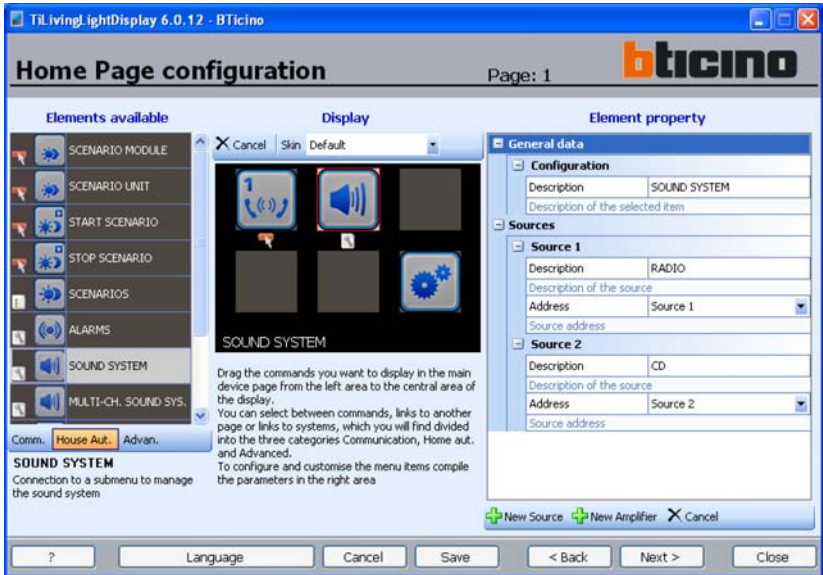



2nd Passage

Click on House Automation; drag the Sound System function inside the Display area.



In the Element property area by clicking on the  key you can enter up to four sources and customise the description.



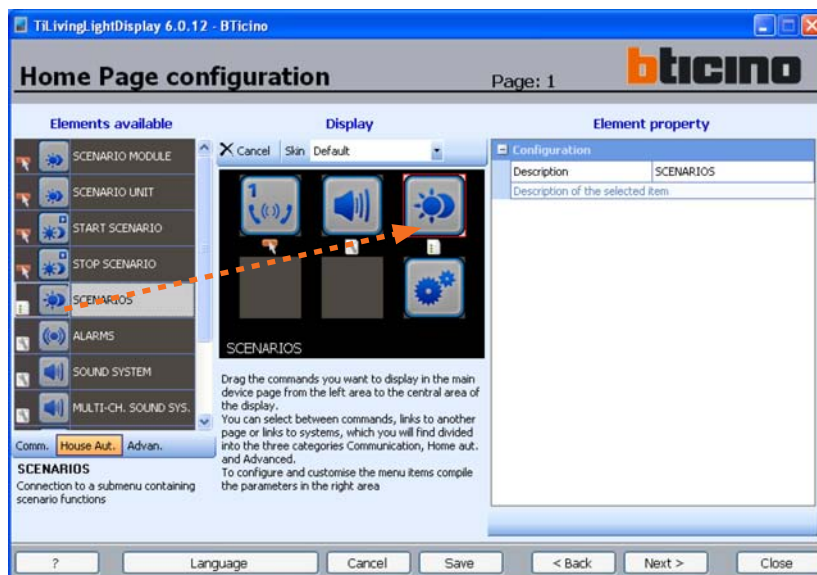
Clicking on the  key enter the Sound system amplifiers (max. 6) which the device should control.

For each amplifier configure the A-PF address and customise the description.



3rd Passage

Now drag the Scenario function inside the Display area



The description can be customised in the Element property area; the scenarios can be programmed in the next page.

4th Passage

Now drag the Alarm function inside the Display area.



The zone description can be customised in the Element property area and you can specify whether they are present in the system; no other configurations are necessary because the device takes the information directly from the burglar-alarm system control unit

5th Passage

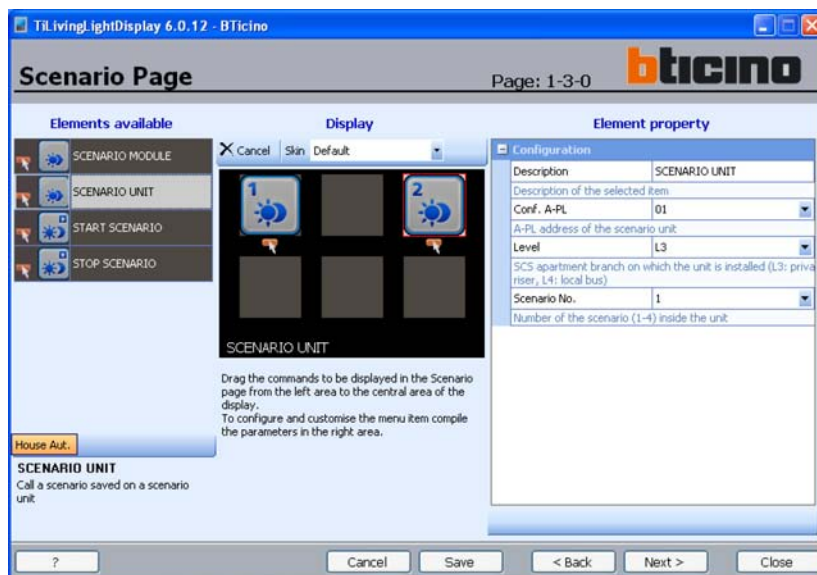
Drag the Various Functions object to the Display area, creating a connection to a sub-page in which to group frequently used objects.



Click **Next >** to proceed to the configuration of the pages and sub-pages as well as the configuration of the objects they contain. Sub-pages are shown in chronological order.

6th Passage

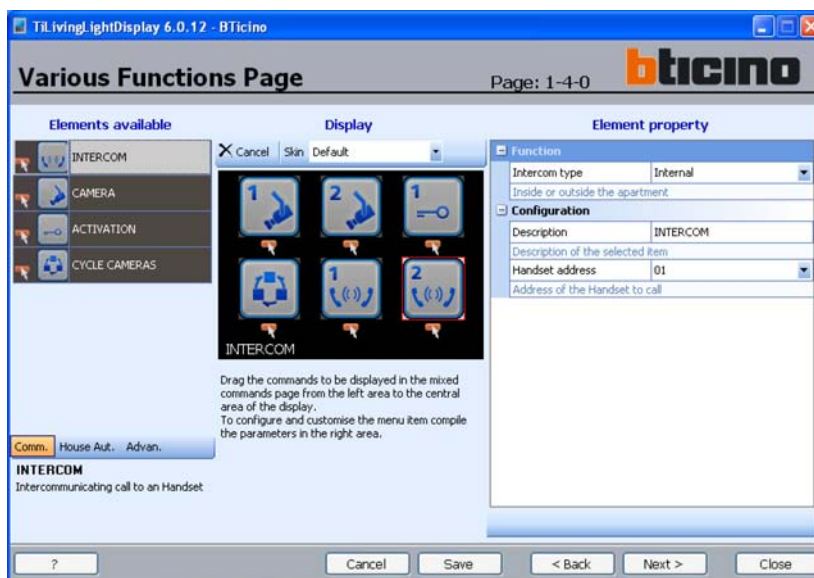
The first sub-page to configure is the Scenarios sub-page. Insert the Scenario Module and the Scenario Central Unit objects.



In the Element Property area configure the scenarios and customise their descriptions.



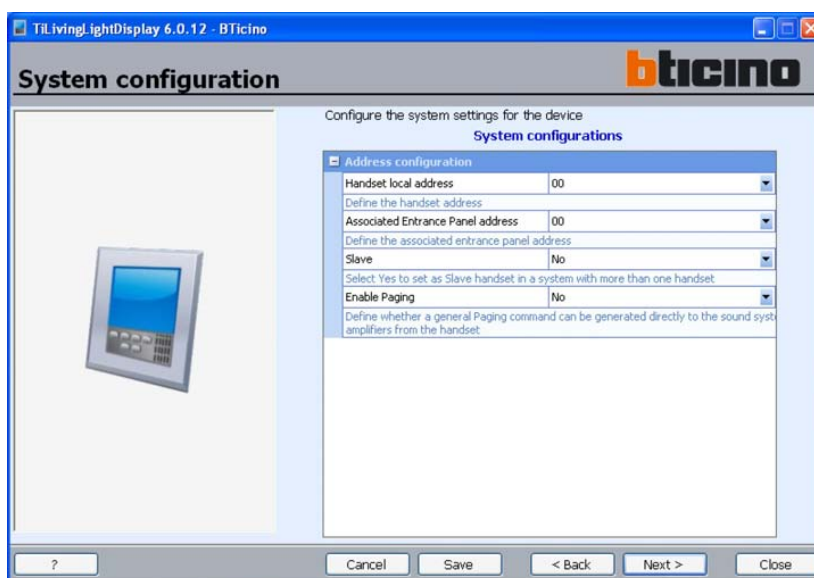
Click **Next >** to create the Various Functions sub-page, and configure the included objects.



Click on the **Next >** push button to move to the next page.

7th Passage

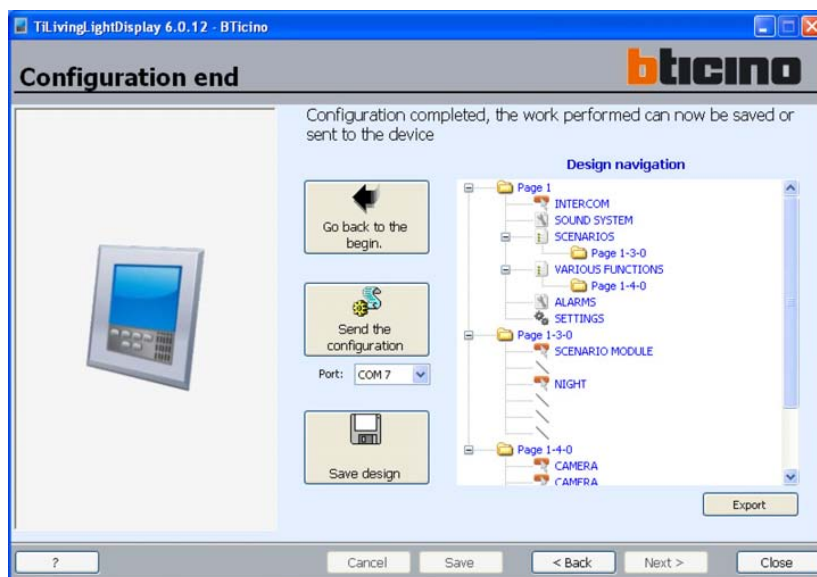
The device configuration page appears.



Configure the device parameters (see Installation manual).

8th Passage

Lastly, after clicking **Next >** again, the last page appears.



The diagram of the created design will be displayed in the Design Navigation area.

At this point four operations can be performed:

- **Go back to the beginning:** the confirm operation request appears. To continue click on YES. If the design has been saved you will go back directly to the beginning, otherwise you will be asked to save it. If you decide not to save it, the current design will be lost.
- **Send the configuration:** sends the configuration to the device directly.
- **Save design:** saves the created design on the PC.
- **Export:** the configuration can be exported to a file with .csv extension.

BTicino SpA

Via Messina, 38
20154 Milano - Italy
www.bticino.com