



Content

1. Hardware and Software requirements	4
2. Installation	4
3. Description of the interface	5
3.1 Function menus and pushbuttons	5
3.2 Graphic Interface Configuration	8
3.3 General Device Parameters	9
4. Connection with the PC	10
5. Creating a new project	12
5.1 Homepage	14
5.2 Automation	15
5.3 Lighting	17
5.4 Burglar alarm	20
5.5 Energy Management	21
5.6 Temperature control	28
5.7 Sound system	39
5.8 Scenarios	42
5.9 Improved scenarios and schedulers	44
5.10 Video door entry system	48
5.11 Multimedia	51
5.12 Favourites	56
5.13 Home page toolbar	57
5.14 Settings	58
6. Open project	63
7. Project Download and Upload	64
7.1 Download	64
7.2 Upload	66
8. Update firmware	67

1. Hardware and Software requirements

Hardware requirements

- Personal Computer with 400 MHz Pentium processor minimum
- 512 MB RAM memory
- SVGA graphic card with minimum resolution 800x600
- CD-ROM reader
- Mouse

Software requirements

- Windows XP or higher
- Internet Explorer 6.0 or higher
- Framework .NET 3.5

2. Installation

To install the **TiMultimediaTouchScreen** software proceed as follows:

1. Insert the CD-Rom in the CD drive;
2. From the main page, in web format, select "Install **TiMultimediaTouchScreen**";
3. The installation program will start copying the system files needed for the installation of the **TiMultimediaTouchScreen** software.

3. Description of the interface

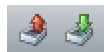
3.1 Function menus and pushbuttons

All the functions that can be performed using TiMultimediaTouchScreen can be selected using the icons on the toolbar, or through the various items in the pull-down menus.

The toolbar includes the following functions:



Creating, Opening and Saving the configuration file



Configuration Upload and Download



Device firmware update



Device info request

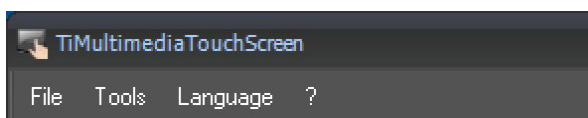


Application language selection

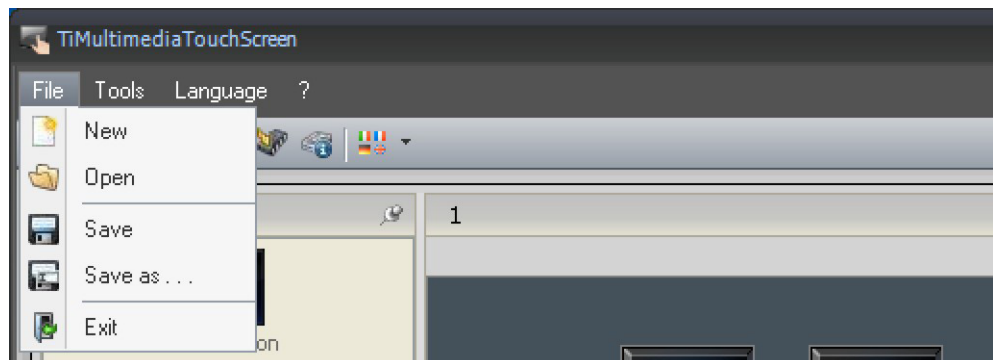


Connection to the HYPERLINK
"http://www.bticino.com" www.bticino.com website

The pull-down menus include the following functions:

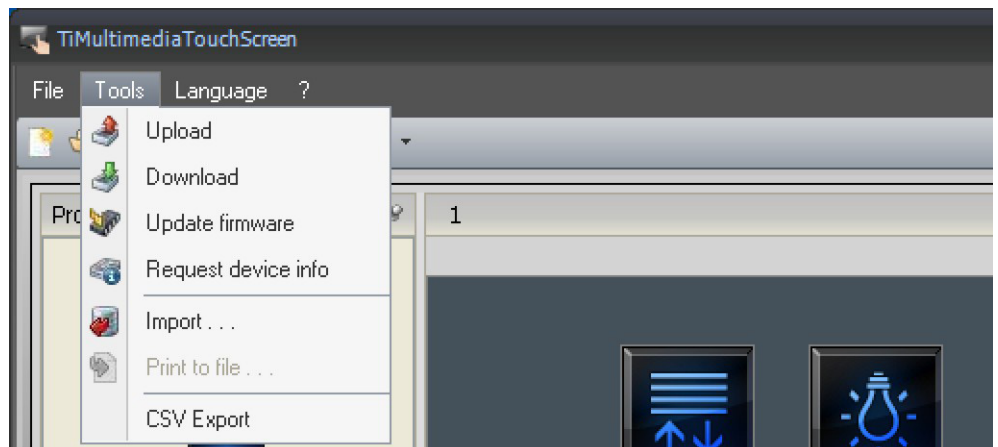


“File” menu

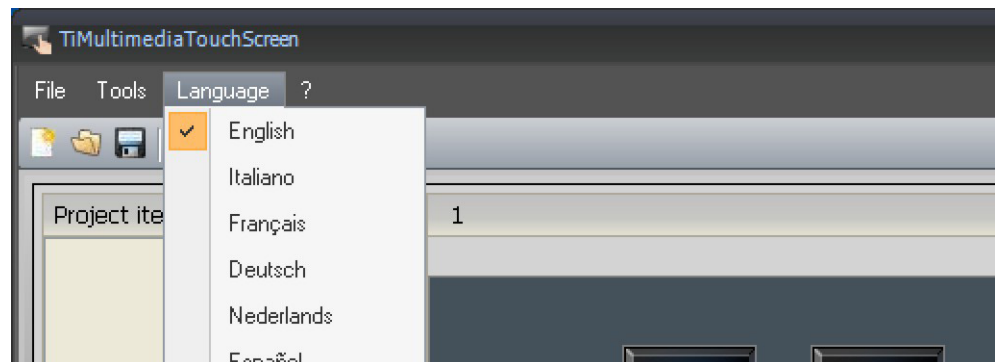


- **New**
To create a new project
- **Open**
To open an existing project file
- **Save**
To save the current project
- **Save as**
To save the current project prompting the user to enter a name
- **Exit**
To exit the program

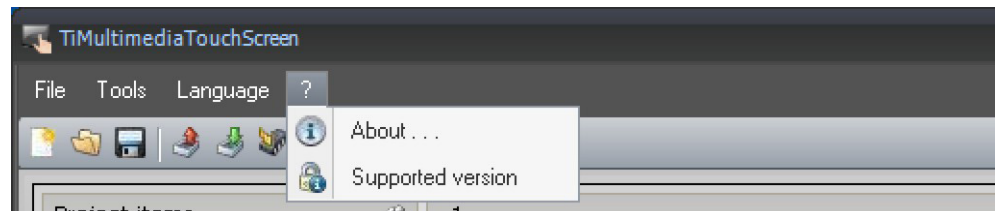
“Tools” menu



- **Upload**
To acquire and display the configuration in the Multimedia Touch Screen
- **Download**
To send the project to the Multimedia Touch Screen
- **Update firmware**
To update the Multimedia Touch Screen resident software
- **Request device info**
To display some technical information
- **Import**
To import a project file with .mhz extension (future application)
- **Print to file**
To create a file containing the configuration data, which can be imported into Microsoft Excel®.
- **CSV Export**
To export the project to a .csv file, which can be opened using Microsoft Excel®.

"Language" menu

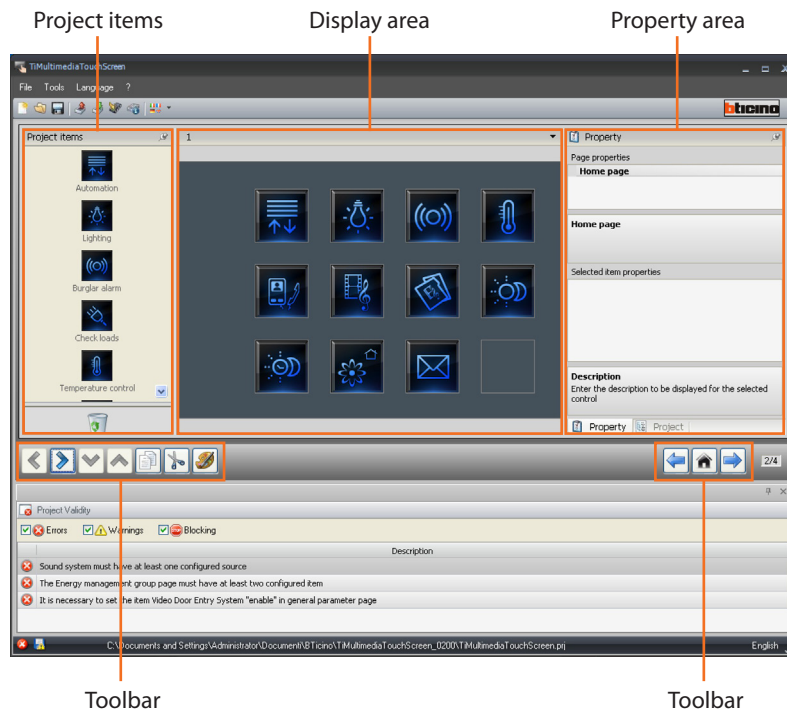
- **Language**
To select the application language

"?" menu

- **About...**
To display some information relating to the TiMultimediaTouchScreen program
- **Supported versions**
To display a table of the Multimedia Touch Screen Firmware versions managed by the TiMultimediaTouchScreen program

3.2 Graphic Interface Configuration

Use this screen to begin the creation of a project.



Project items

This area can be used to select the functions to include in the Multimedia Touch Screen menu. To insert a function, simply click and hold the mouse button on the function icon, and drag it to the Display area, or click on the icon twice with the left button of the mouse.

Display area

The Display area shows the new Multimedia Touch Screen menu setup. The first screen is the main page of the menu.

Property area

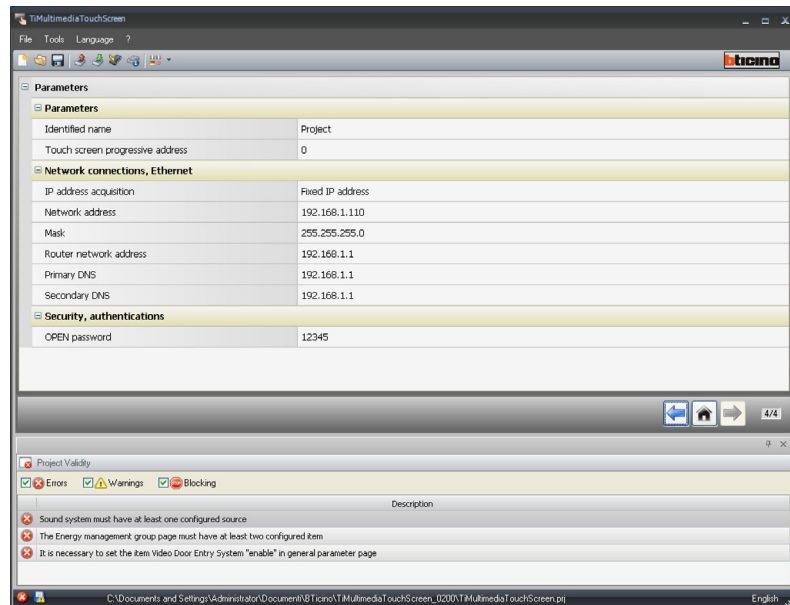
All the functions dragged to the Display area must be configured. When each function is selected, the "Selected Item properties" area will display the parameters to be configured. It is now possible to update the "Description" field at one's own discretion. By going to "Project" display, it will be possible to check at all times the three structure for the entered functions. Go to the "Information list" screen to check if any mistakes have been made during the creation of the project.

Toolbar

- to return to the parameter start page
- return to the main menu in the display area
- to go to the final parameter page
- return to the previous page in the display area
- go to the next page in the display area
- go to the second page of the display area
- return to the first page of the display area
- copy and paste an object in the display area
- cut an object in the display area
- it enables changing the style of the icons

3.3 General Device Parameters

This screen can be used to set the device configuration parameters.



- **Parameters**

Identified name: Enter the project name

Touch screen progressive address: enter the identification number of the device on the system

- **Network connections, Ethernet**

IP address acquisition

Network address

Mask

Router network address

Primary DSN

Secondary DSN

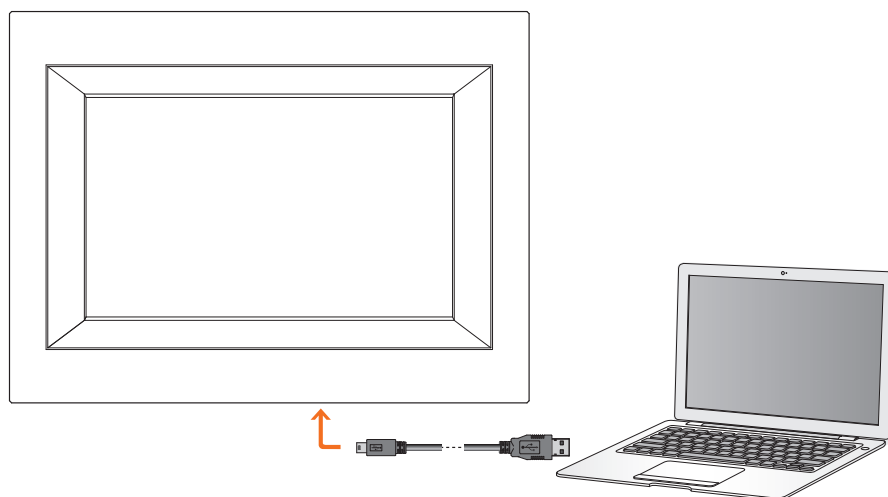
- **Security, authentications**

Open Password: enter the OPEN password for the remote control of the My Home system.

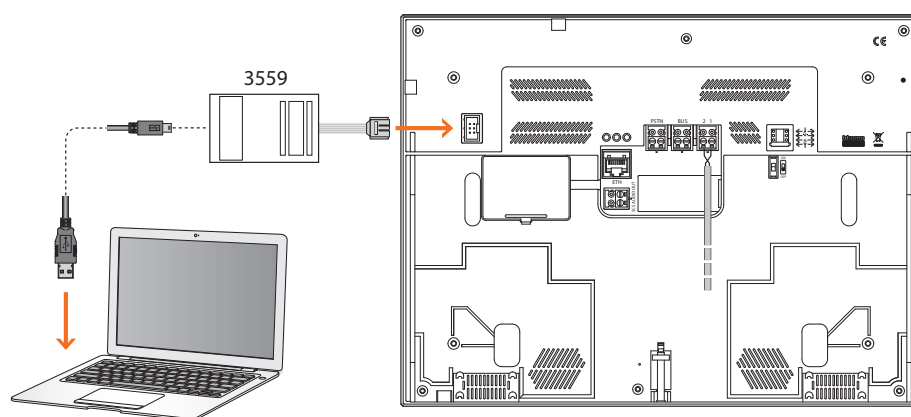
4. Connection with the PC

To receive/transfer the configuration performed using TiMultimediaTouchScreen or to update the firmware, connect Multimedia Touch Screen to the PC using a USB-miniUSB cable, the serial connector (item 3559), or an Ethernet cable.

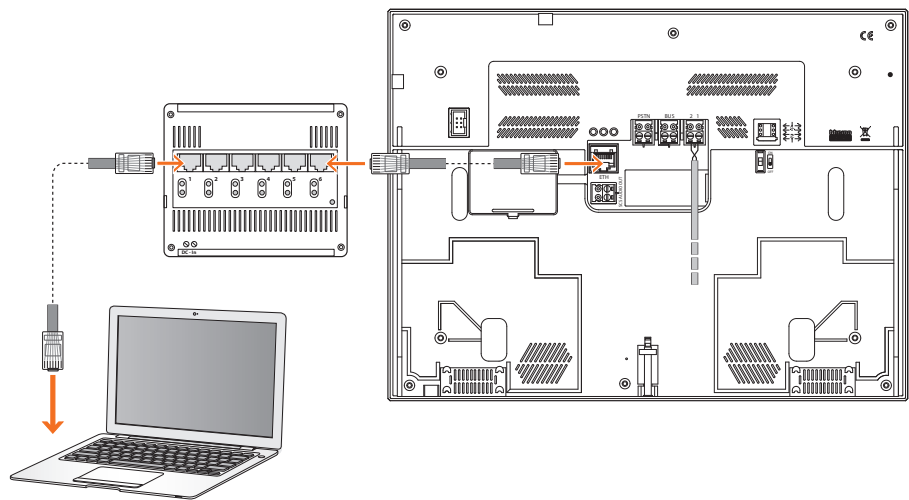
USB connection



Serial connection

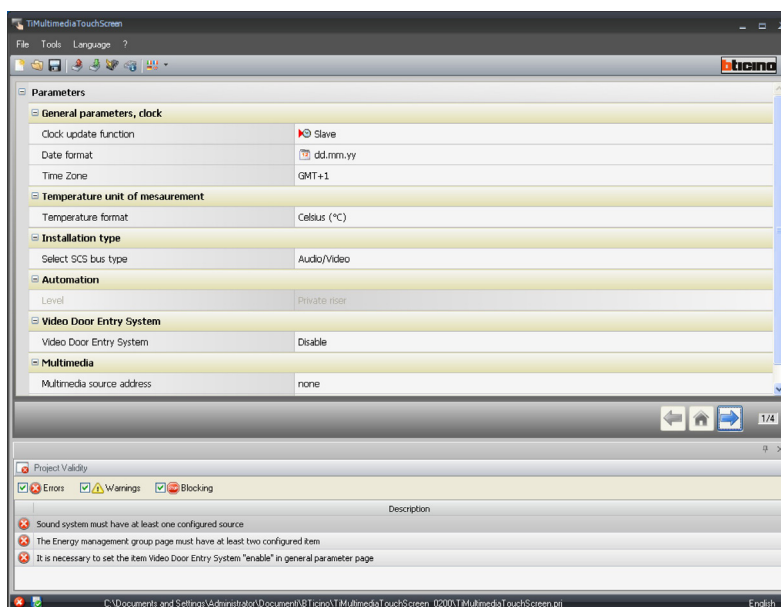
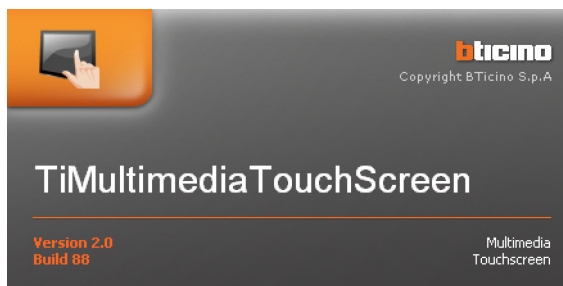


Ethernet connection




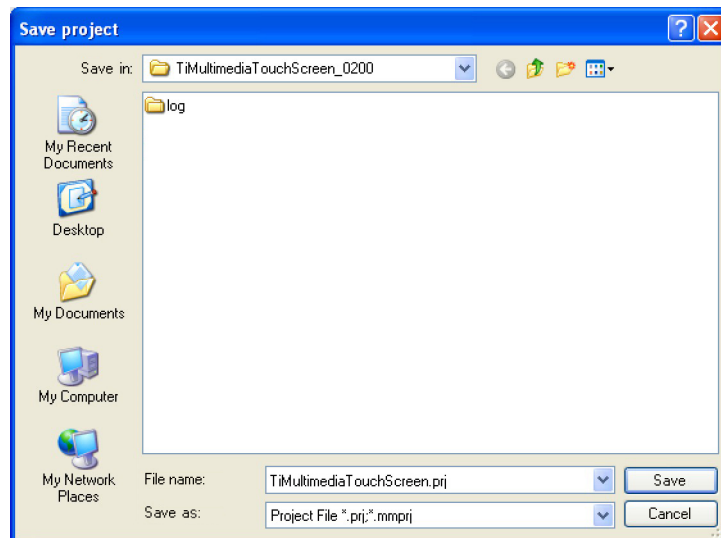
5. Creating a new project

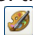
When the TiMultimediaTouchScreen is started, a screen is displayed, where the user can set the device configuration parameters.

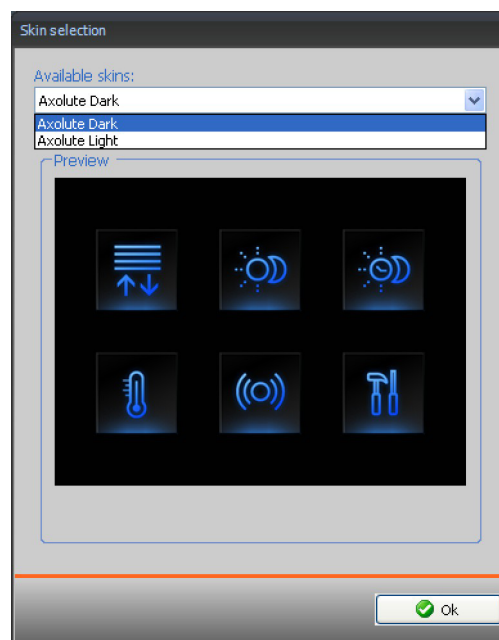


- **General parameters, clock**
Clock update function: select if Multimedia Touch Screen should be set as the Master clock for the My Home system.
Update frequency: this function is only active if the clock is set as Master and it can be used to set the intervals for sending the update to the My Home system devices set as Slave.
Date format: Select the date display format (e.g.: dd.mm.yy / mm.dd.yy. / yy.mm.dd.).
Time zone: select the correct time zone for the geographical area you live in.
- **Temperature unit of measurement**
Temperature format: choose if Celsius (°C) or Fahrenheit (°F) degrees should be displayed
- **Installation type**
Select SCS bus type: select **Multimedia** if the device is wired on the multichannel matrix; select **Automation** if the device is wired on the SCS BUS
- **Automation**
Level: if the device has been wired on the SCS BUS, select the level it belongs to (private riser/local BUS)
- **Video door entry system**
Video door entry system: select enable if the device is wired on the video door entry system, select disable if it is connected on the SCS BUS
Video door entry system type: If multimedia has been selected in the SCS BUS configuration, it will be possible to select the type of video door entry system (SCS or IP)
H Address: enter the address of the handset associated to the multimedia interface.
- **Multimediale**
Multimedia source address: enter the Multimedia Touch Screen address as sound system source
Multimedia amplifier address: enter the Multimedia Touch Screen address as amplifier of the sound system

At the end of the configuration of the device parameters click . The Save project window opens.



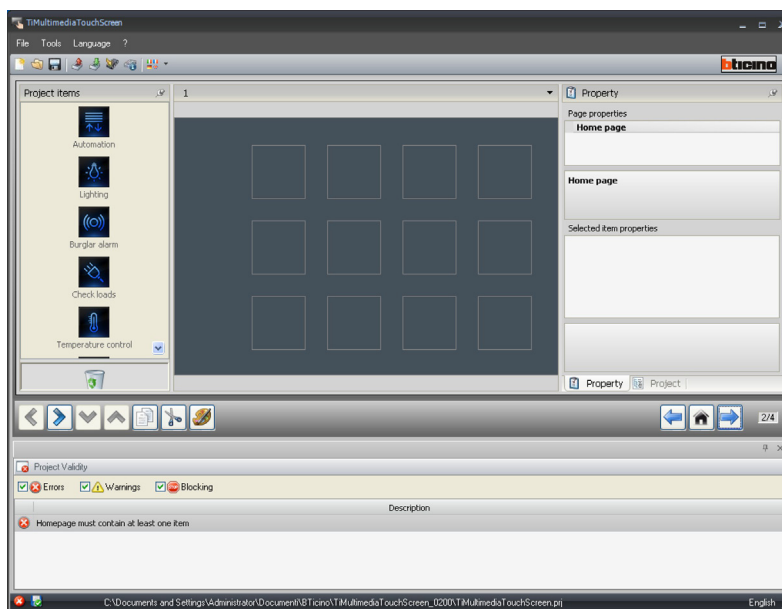
Once the project has been saved a new window appears, where the user can select the style of the icons (the style of the icons may be changed at any time during the configuration by pressing ).



After selecting the style of the icons click .

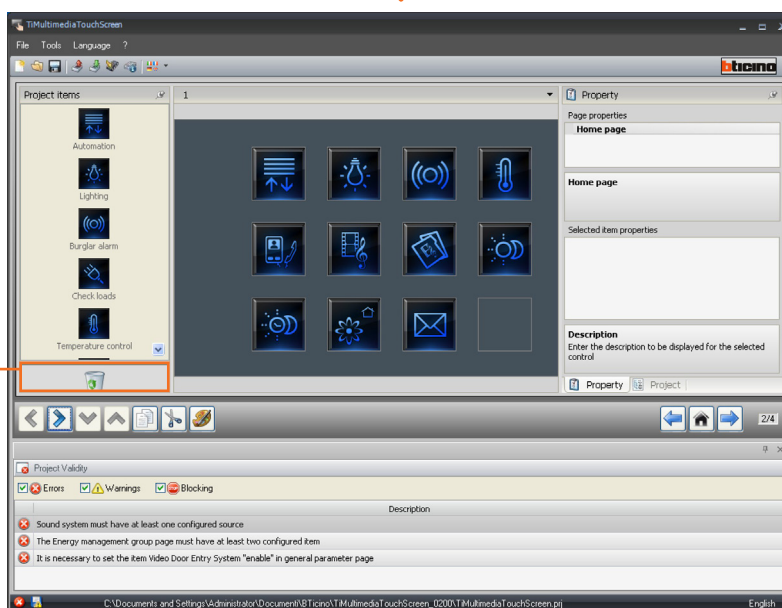
5.1 Homepage

Drag the functions from the “Project items” area to the “Display” area, or simply double click on the object with the mouse (e.g.: double click on “Automation”).




The “Energy Data”, “Supervision System” and “Load Management” functions can be included individually in the project. In alternative, it is also possible to select the “Energy Management” function, which groups the three above functions (see chap. 5.5).

Bin

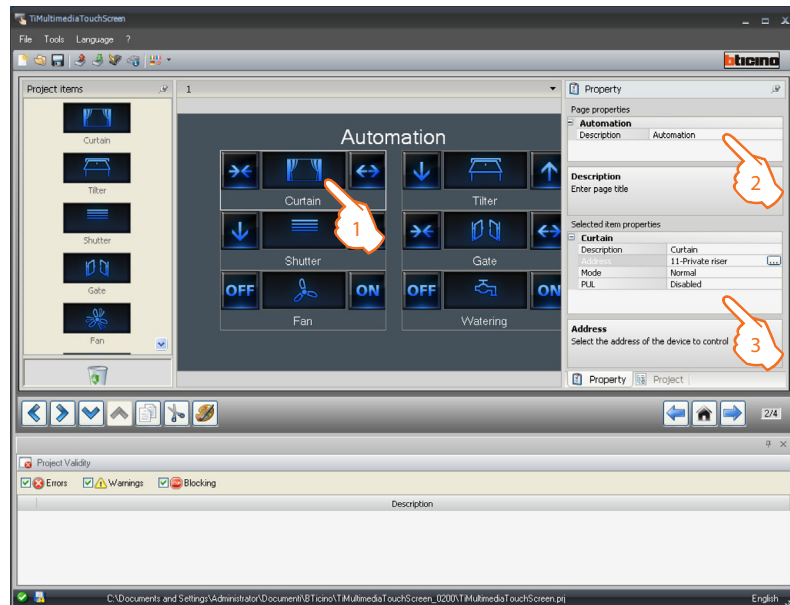


To delete the function from the “Display” area, drag its icon to the bin, or select the item and press “**canc**” on the keypad.

After selecting all the functions to be included in the project, click  to begin their configuration.

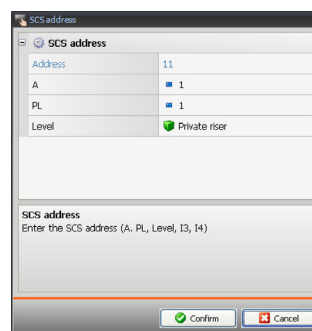
5.2 Automation

Drag the objects from the "Project items" area to the "Display" area, or simply double click on the object with the mouse (e.g.: double click on "Curtains").



1. Select an object of the Display area.
2. A personalised description of the page can be entered in the "Page properties" area.
3. Inside the "Selected item properties" area it will be possible to enter a customised description of the selected object. For certain types of automatisms (curtain, garage door, shutter, and gate) the configuration of the control operating mode is required:
 - **Safe Mode**
Opening or closing is performed only while the corresponding key is pressed. To stop simply release the key.
 - **Normal Mode**
To start the opening or closing movement, touch the corresponding key. During the movement the icon changes showing the Stop key, and indicating that the function is active. To stop the movement, click Stop.

Click the  key to configure the automatism.



- **A = Room:** select the value corresponding to the configurator connected to A of the device to be controlled.
- **PL = Light point:** select the value corresponding to the configurator connected to PL of the device to be controlled.

- **Level:** select the level it belongs to (Private riser = level 3 or Local Bus = level 4).
If Level = Local Bus is selected, the interface field appears.
In this case select the logic expansion interface address where the object to control is located.

For the **Door lock** control select the video door entry system address, or the address of the entrance panel associated to the system (if the device is wired on the video door entry system); if the device is wired on the SCS BUS, for the **Door lock** control, the values A and PL must be entered.



Video door entry system type

Lighting type

Lighting type

A = Room: select the value corresponding to the configurator connected to A on the device to control.

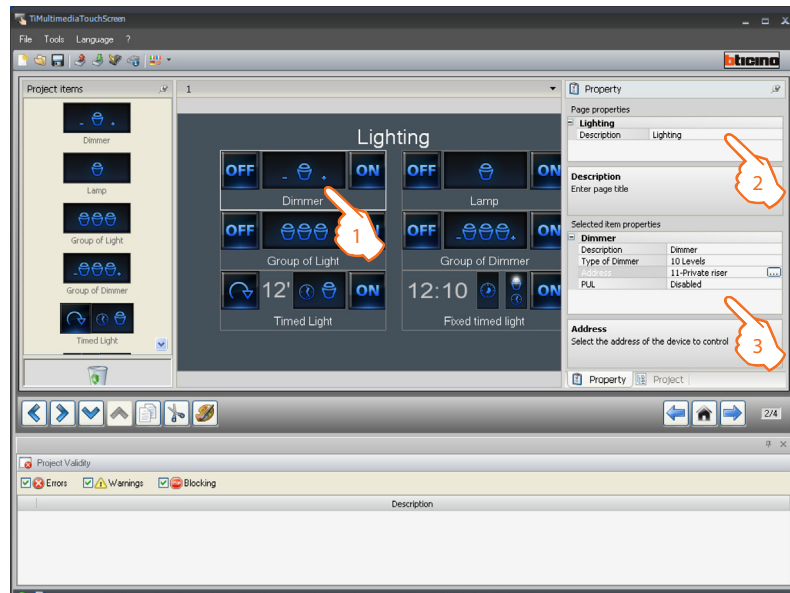
PL = Light Point: select the value corresponding to the configurator connected to PL on the device to control.

Once the configuration of the Automation page has been completed, click  to move to the following page, or click  to return to the previous page.



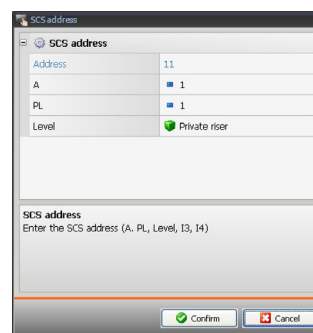
5.3 Lighting

Drag the objects from the “Project items” area to the “Display” area, or simply double click on the object with the mouse.



1. Select an object of the Display area.
2. A personalised description of the page can be entered in the “Page properties” area.
3. A personalised description of the selected object may be entered in the “Selected item properties” area. For some types of actuators (Lamp and Dimmer) enabling/disabling of PUL is required; select enabled if the actuator being configured is physically or virtually configured as PUL. Click [...](#) to configure the light points.

Configuration of Lamp, Dimmer, Timed light:



- **A = Room:** select the value corresponding to the configurator connected to A of the device to be controlled.
- **PL = Light point:** select the value corresponding to the configurator connected to PL of the device to be controlled.

- **Level:** select the level it belongs to (Private riser = level 3, or Local Bus = level 4).
If Level = Local Bus is selected, the interface field appears.
In this case select the logic expansion interface address where the object to control is located.

Address	11#4#01
A	1
PL	1
Level	Local bus
I3	0
I4	1

Level
Select the level

Confirm Cancel

Configuration of **Light assembly, Dimmer assembly** (associating several control devices):

This type of item can be used to control several light points at the same time, setting either point-by-point controls, or controls for light groups and rooms, or by setting a general control.

Address	11
A	1
PL	1
Level	Private riser

SCS addresses list
Enter the SCS addresses

Add address Remove Address

Confirm Cancel

- **A = Room:** select the value corresponding to the configurator connected to **A** of the device to be controlled.
- **PL = Light point:** select the value corresponding to the configurator connected to **PL** of the device to be controlled.
- **Level:** select the level it belongs to (Private riser = level 3, or Local Bus = level 4).
If Level = Local Bus is selected, the interface field appears.
In this case select the logic expansion interface address where the object to control is located.



This control may only be sent to actuators that support virtual configuration.

Fixed timed light configuration:

This type of object enables configuring a light to be controlled by a fixed switch-on delay.

- **A = Room:** select the value corresponding to the configurator connected to **A** of the device to be controlled.
- **PL = Light point:** select the value corresponding to the configurator connected to **PL** of the device to be controlled.
- **Level:** select the level it belongs to (Private riser = level 3, or Local Bus = level 4).
If Level = Local Bus is selected, the interface field appears.
In this case select the logic expansion interface address where the object to control is located.

- Click to set the switch-on time delay (Hours, Minutes, Seconds).

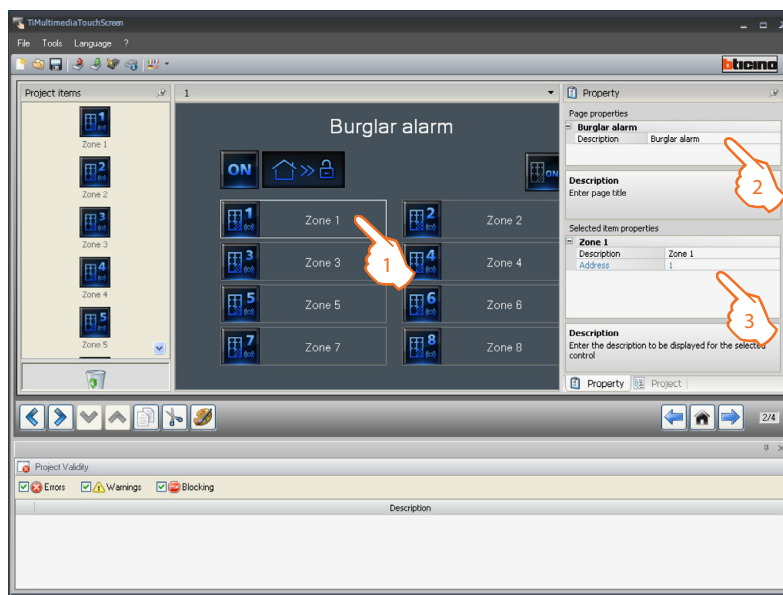
Staircase light configuration:

If the system is set for "Staircase light" control, when this is activated in TiMultimediaTouchScreen, it will be possible to control it from the device by selecting a customised description.


Once the lighting page configuration operation has been completed, click to go to the following page.

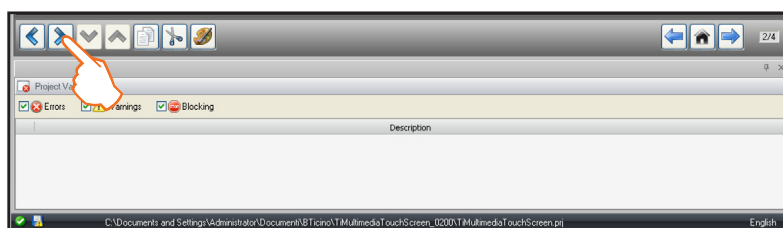
5.4 Burglar alarm

Drag the objects from the “Project items” area to the “Display” area, or simply double click on the object with the mouse.



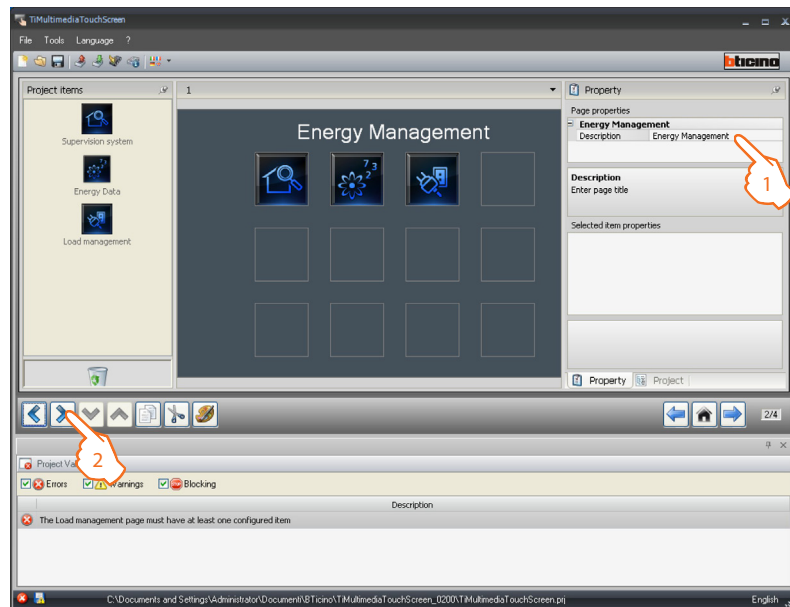
1. Select an object of the Display area.
2. A personalised description of the page can be entered in the “Page properties” area.
3. In the “Selected item properties” are it is possible to enter a customised description of the zone and select the address of the device to control.
Up to 8 sources may be added.


Once the Burglar alarm page configuration operation has been completed, click  to go to the next page.



5.5 Energy Management

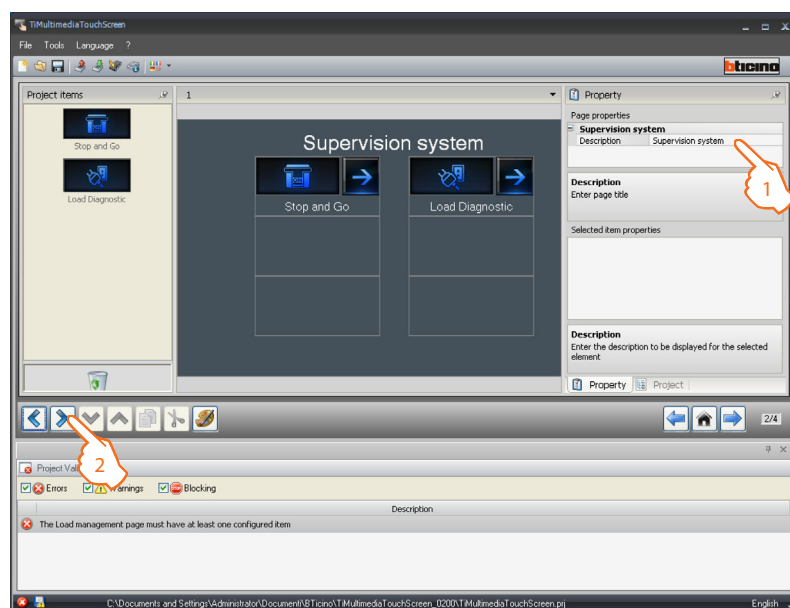
Drag the objects in the “Project items” area to the “Display” area, or simply double click the object with the mouse.




1. A personalised description of the page can be entered in the “Page properties” area.
2. Once customisation of the Energy management page has been completed, click  to go to the following page.

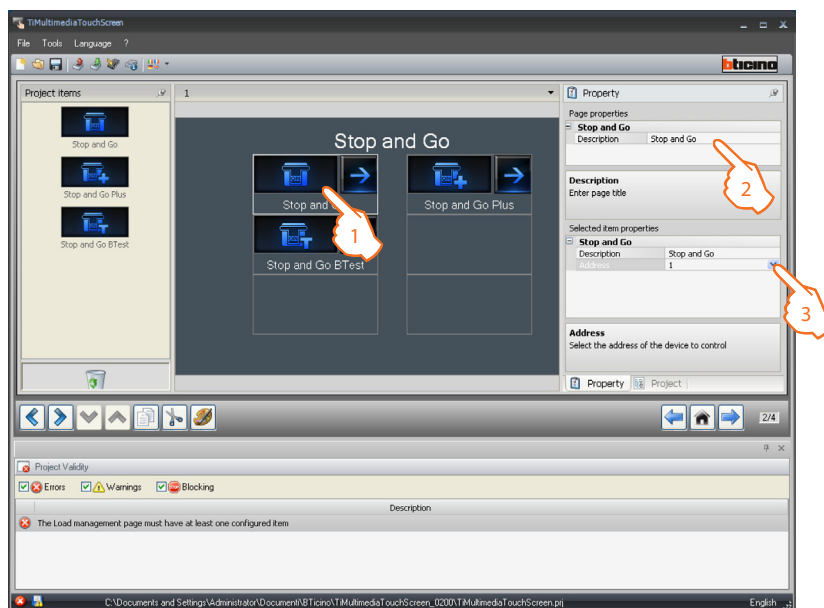
Supervision system

Drag the objects in the “Project items” area to the “Display” area, or simply double click the object with the mouse.



1. A personalised description of the page can be entered in the “Page properties” area.
2. Once the customisation of the start page has been completed click  to access the configuration of the pages of the various objects.

Drag the objects in the “**Project items**” area to the “**Display**” area, or simply double click the object with the mouse.

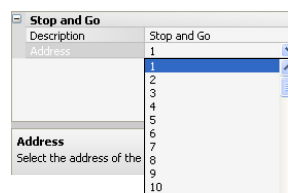


1. Select an object of the Display area.
2. A personalised description of the page can be entered in the “**Page properties**” area.
3. In the “**Selected item properties**” area the user can enter a customised description of the Stop And Go connected, and allocate the associated address to the device.




Up to a maximum of 20 devices may be configured.

Configuration of the three devices for the supervision of the system (**Stop&go**, **Stop&go plus** and **Stop&go BTest**)



The three devices have the same configuration procedures.

- **Address:** Select the device address value. The value can be between 1 and 127, and corresponds to the value of the configurators connected to the configurator socket of the device (example: for A1 = “1”; A2 = “2” and A3 = “5” corresponds address 125).

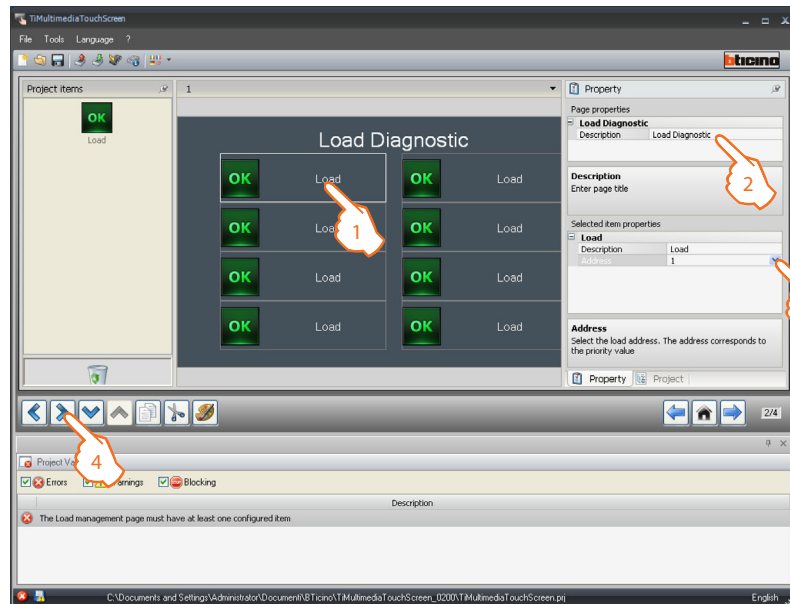
Once the Stop And Go page configuration operation has been completed, click  to go to the following page.




Load Diagnostic configuration

The “**Load Diagnostic**” function can be used to check that the loads are working correctly, by measuring the earth leakage current absorbed by the same.

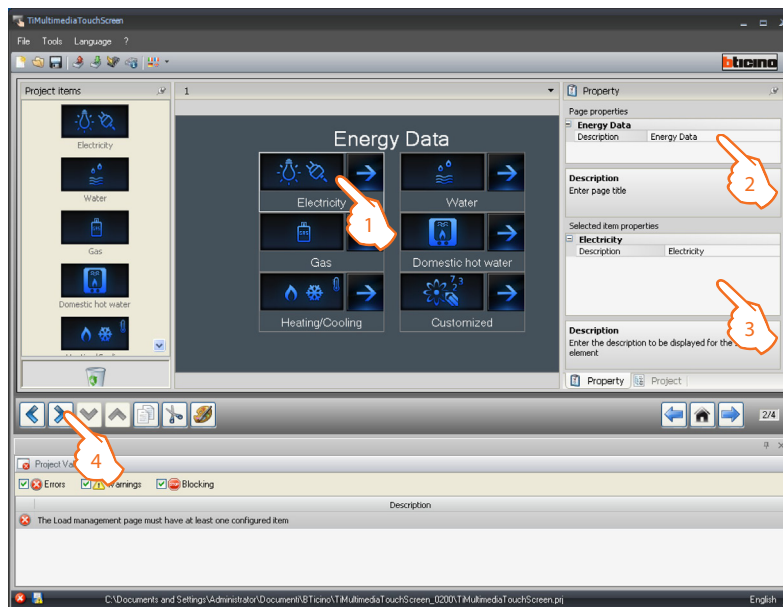
Drag the objects in the “**Project items**” area to the “**Display**” area, or simply double click the object with the mouse.




1. Select an object of the Display area.
2. A personalised description of the page can be entered in the “**Page properties**” area.
3. Enter the device address value. The value can be between 1 and 64 and corresponds to the value of the configurators connected to the configurator socket of the device.
4. Once the Load Diagnostic page configuration operation has been completed, click  to go to the following page.

Consumption/Production display

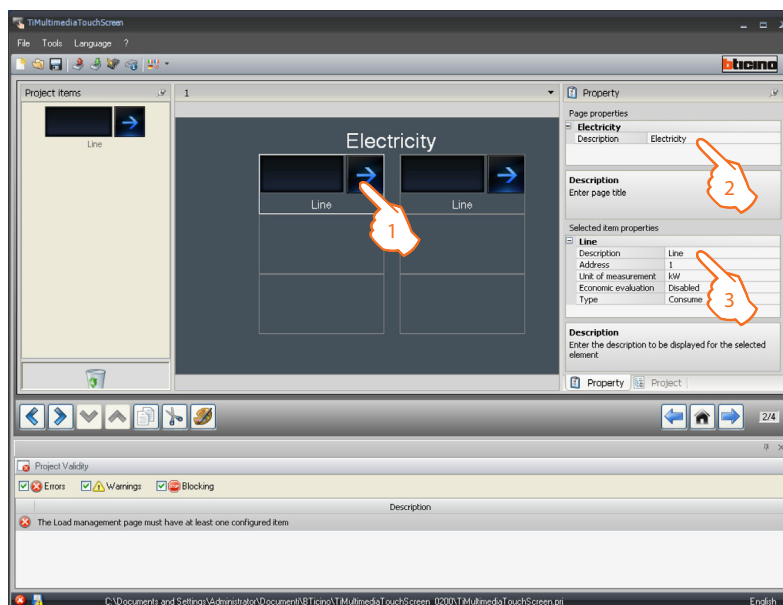
Drag the objects in the “Project items” area (ELECTRICITY, WATER, GAS, DHW (Domestic Hot Water), HEATING/COOLING and CUSTOMIZED) to the “Energy Data” area, or simply double click the object with the mouse.



1. Select an object of the Display area.
2. A personalised description of the page can be entered in the “Page properties” area.
3. Inside the “Selected item properties” area it will be possible to enter a customised description of the selected object.
4. Once the customisation of the start page has been completed, click  to access the configuration of the pages of the various objects.

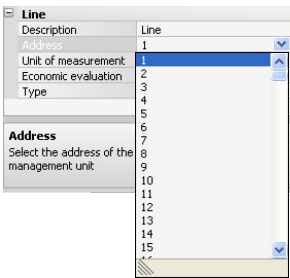
Electricity configuration

Drag the “Line” object to the “Display” area, or simply double click the object with the mouse (it is possible to drag up to a maximum of 20 Line objects).

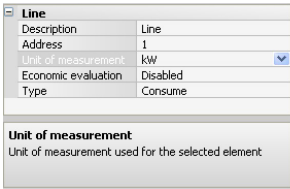


1. Select an object of the Display area.
2. A personalised description of the page can be entered in the “Page properties” area.
3. Inside the “Selected item properties” area it will be possible to enter a customised description.

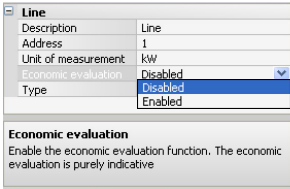
Line object configuration



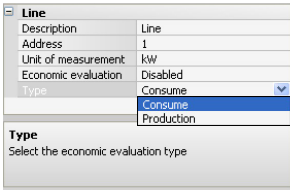
- **Address:** select the reference value between 1 and 255.





- **Unit of measurement:** enter the desired unit of measure (kW/€)




- **Economic evaluation:** enable or disable the economic evaluation of the object.



 If “Consumption measurement” or “Production measurement” are enabled, it will be necessary to set the corresponding tariffs (see the “Currency setup” chapter).

 The economic evaluation is an indicative data.

 This manual only describes the display of the electricity, because TiMultimediaTouchScreen manages all values in the same way.

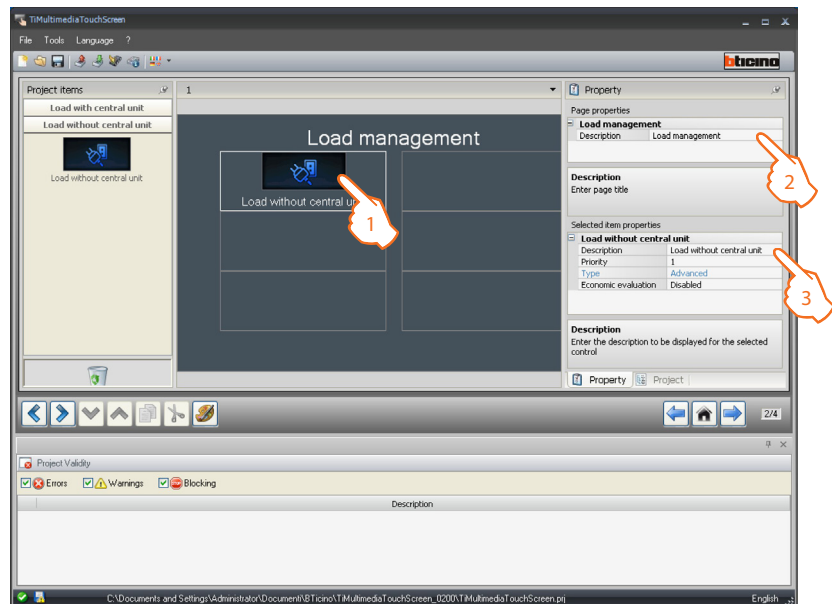
- **Type of measurement:** select the type of measurement of the consumption between Consumption and Production.



Once the Consumption/Production Display page configuration operation has been completed, click  to go to the following page.

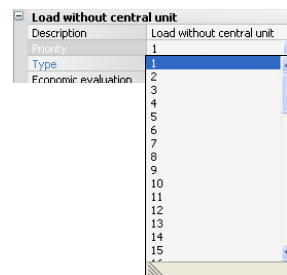
Load management (without load management central unit installed)

Drag the objects in the “Project items” area to the “Display” area, or simply double click the object with the mouse.

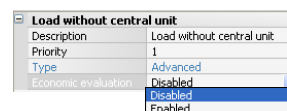


1. Select an object of the Display area.
2. A personalised description of the page can be entered in the “Page properties” area.
3. Inside the “Selected item properties” area it will be possible to enter a customised description of the selected object.

Selected load configuration (advanced actuators only):

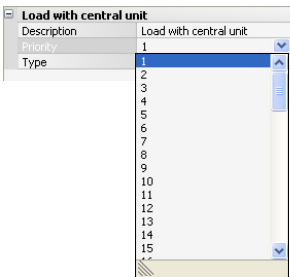


- **Priority:** select the reference value between 1 and 255.

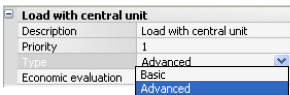


- **Economic evaluation:** Enable the economic evaluation for the displaying of the corresponding load consumptions/productions (€/kW).

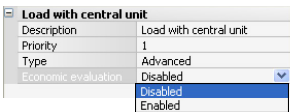
Load management (with load management central unit installed)



- **Priority:** select the reference value between 1 and 255.



- **Type:** select the mode, Advanced if the system includes actuators with current sensors (advanced actuators); the Touch Screen will have meters that may be reset at any time, to monitor consumption, in addition to the display of the instantaneous consumption of the load.



- **Economic evaluation:** Enable the economic evaluation for the displaying of the corresponding load consumptions/productions (€/kW).

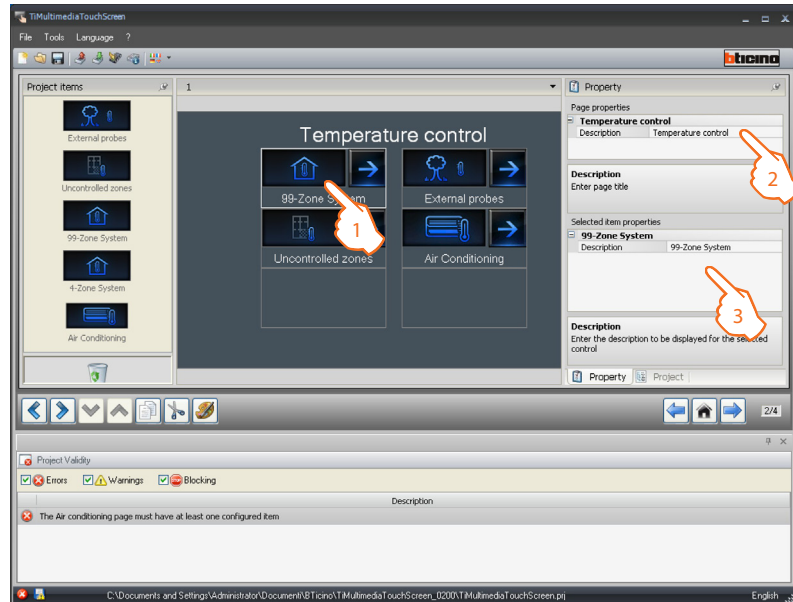


Once the Consumption/Production Display page configuration operation has been completed, click  to go to the following page.


5.6 Temperature control

Drag the objects from the “Project items” area to the “Display” area, or simply double click on the function with the mouse.

Only one type of temperature control central unit can be entered, and only one external probe, one non-controlled zone and one air conditioning object.




1. Select an object of the Display area.
2. A personalised description of the page can be entered in the “Page properties” area.
3. A personalised description may be entered in the “Selected item properties” area.

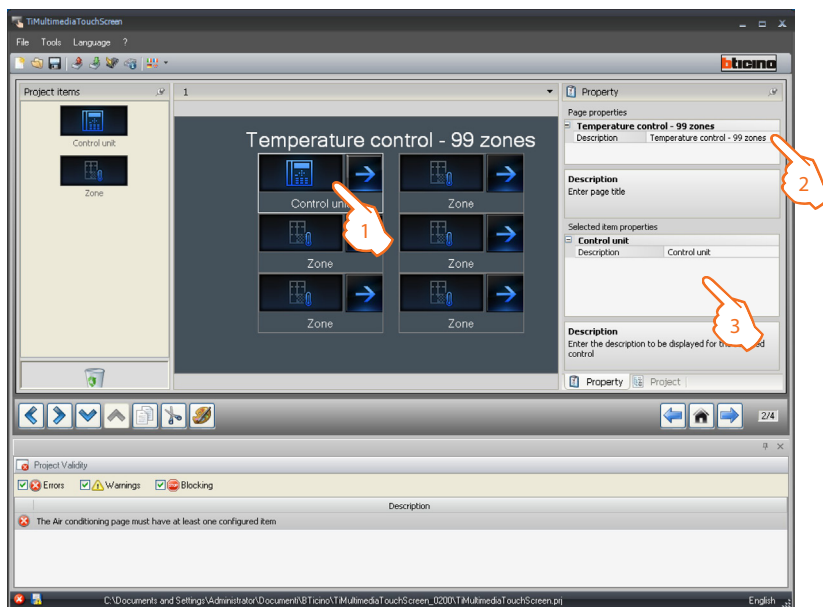
Once the initial page customisation operation has been completed click  to access the configuration of the pages for the various objects.



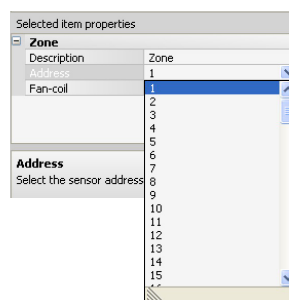
Temperature control

Drag the objects from the “Project items” area to the “Display” area, or simply double click on the function with the mouse.

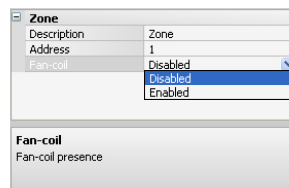
 If the 4-zone control unit is selected, each zone will have a dedicated preset zone.




1. Select an object of the Display area.
2. A personalised description of the page can be entered in the “Page properties” area.
3. A personalised description may be entered in the “Selected item properties” area.




- **Address:** select the value corresponding to the configurators connected within the zones to be controlled.

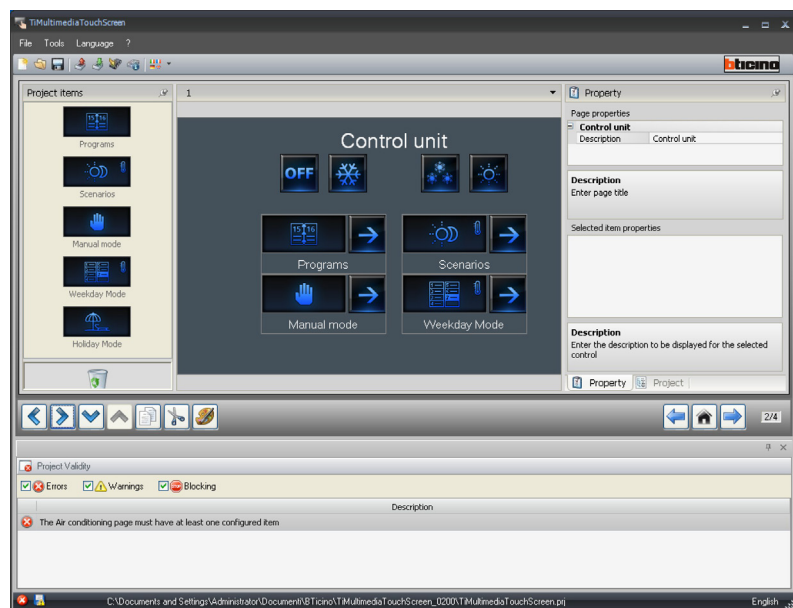


- Select if the **Fan-coil** function is enabled or disabled.

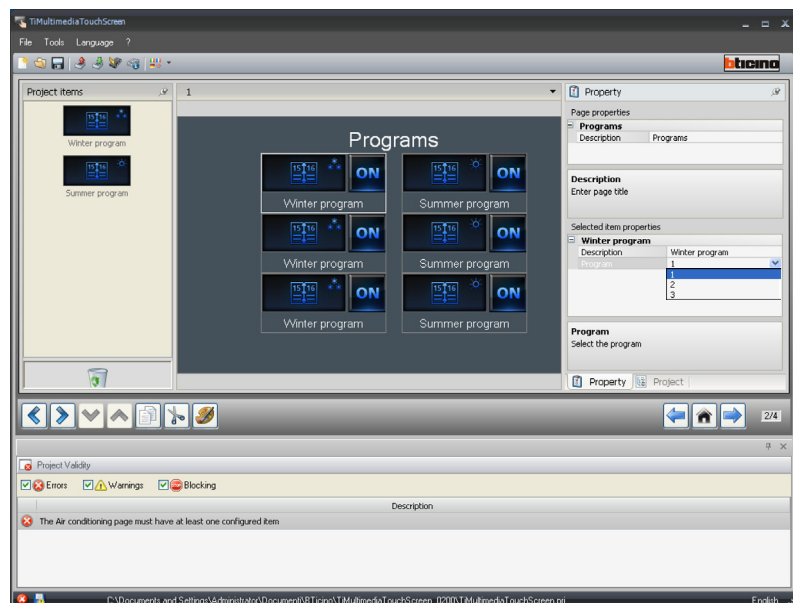
Once the configuration of the various zones has been completed, click  to go to the following page.




The page includes 5 programs. Based on the programming of the actual control unit it will be possible to choose which programs may be displayed on the device, and customise their description. Click  to go to the next page.



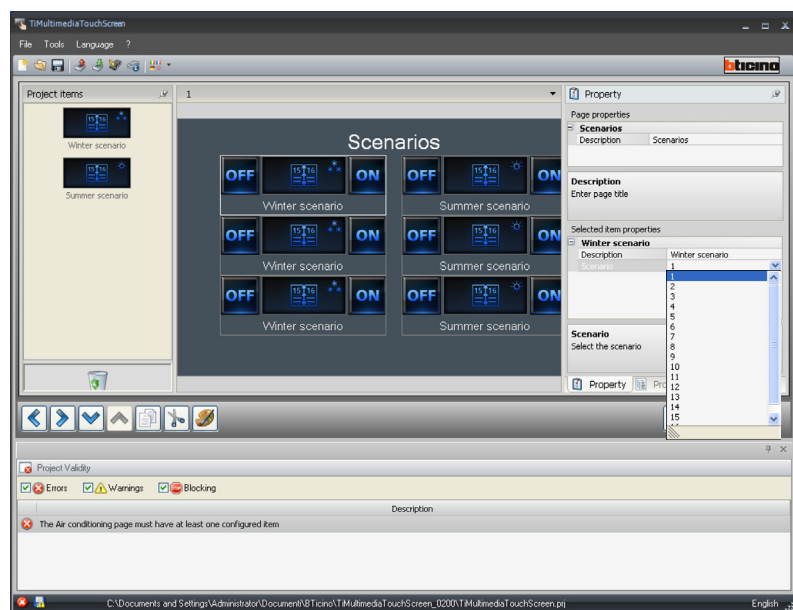
The page includes the icons for **Winter** and **Summer** programs. Based on the programming of the actual control unit it will be possible to choose which ones may be displayed on the device, customise the description, and associate the number of the program on the control unit.




Once the configuration of the summer and winter programs has been completed, click  to go to the next page.



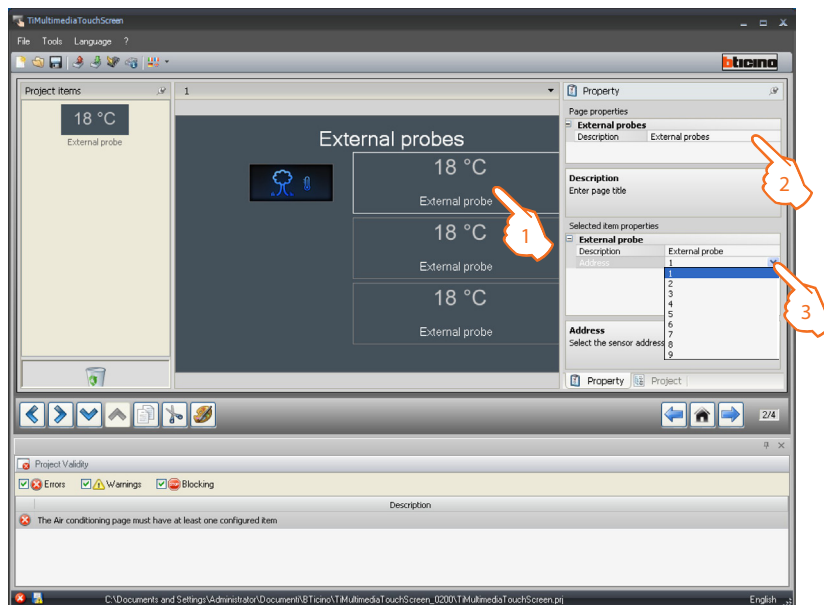
The page includes the icons for the **Winter** and **Summer** scenarios. Based on the programming of the actual control unit it will be possible to choose which ones may be displayed on the device, customise the description, and associate the number of the scenario on the control unit.




Once the configuration of the summer and winter programs has been completed, click  to go to the following page.



This page can be used to connect the external sensors within the system.
Drag the objects from the “**Project items**” area to the “**Display**” area, or simply double click on the function with the mouse.

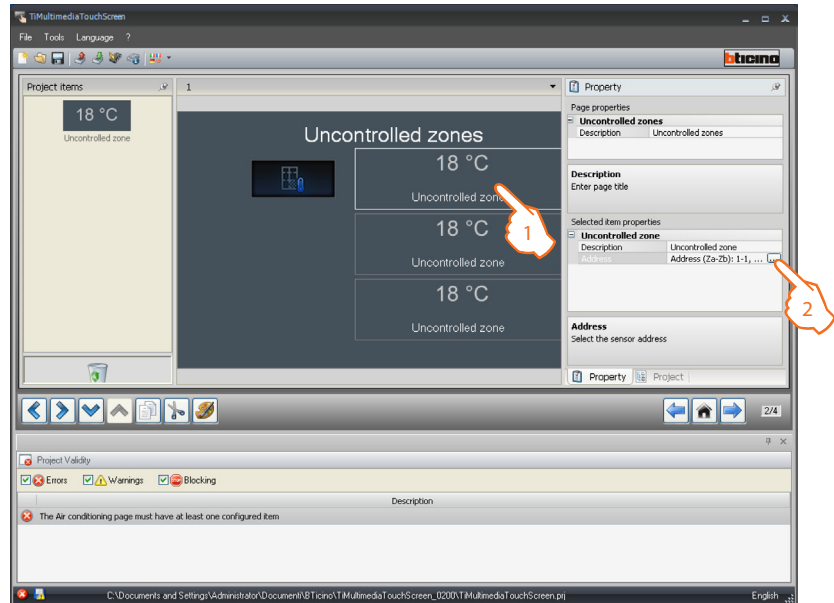


1. Select an object of the Display area.
2. A personalised description of the page can be entered in the “**Page properties**” area.
3. A personalised description of the selected object may be entered in the “**Selected item properties**” area. This area may also be used to select the address of the external sensor to be associated.

Once the configuration of the external sensors has been completed, click  to go to the next page.

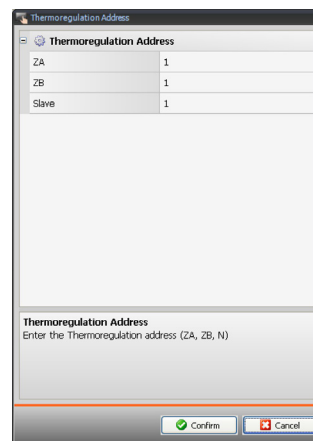


This page can be used to connect the non-controlled zones of the system.
Drag the objects from the “Project items” area to the “Display” area, or simply double click on the function with the mouse.



1. Select an object of the Display area.
2. Inside the “Selected item properties” area it will be possible to enter a customised description.
Click [...] to configure the address of the selected non-controlled zone.

Configuration of Uncontrolled zones

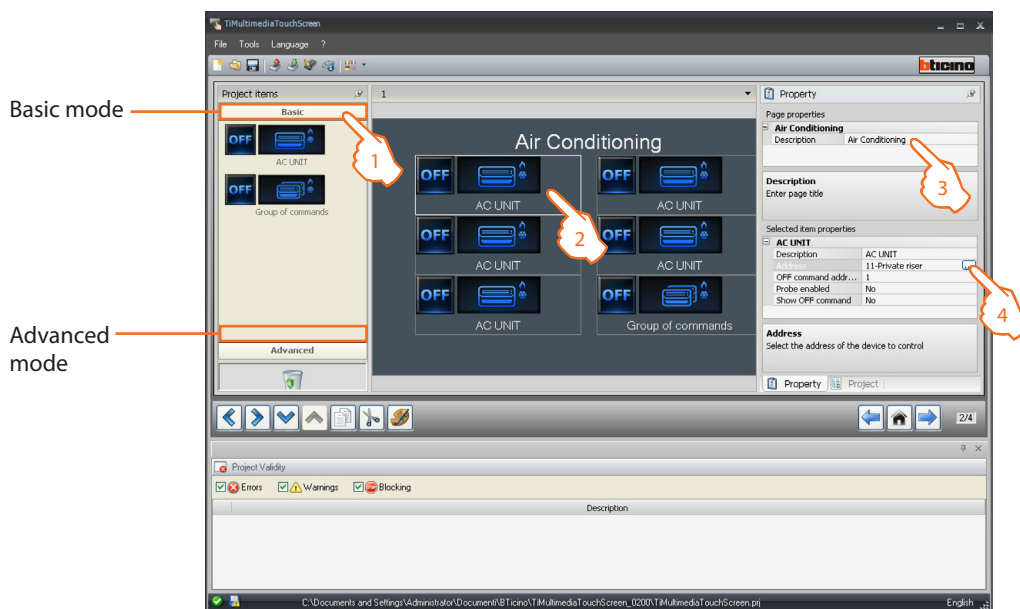


- **ZA** = Select the value corresponding to the configurator connected to ZA in the device.
- **ZB** = Select the value corresponding to the configurator connected to ZB in the device.
- **N:** = Select the value corresponding to the configurator connected to N in the device.

Once the configuration of the non-controlled zones has been completed, click [Next] to go to the following page.

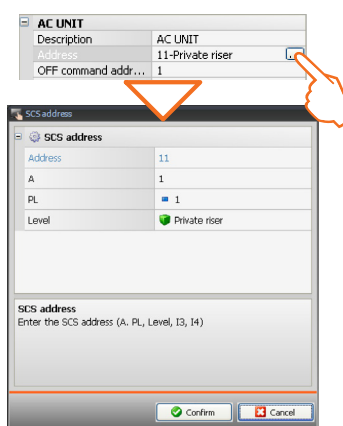
AIR CONDITIONING configuration - basic mode

In the page it is possible to include all the AIR CONDITIONING objects installed in the system. Drag the objects in the "Project items" area to the "Display" area, or simply double click the function with the mouse.

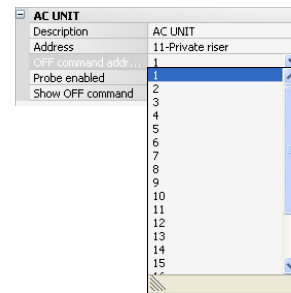


1. Select the configuration mode. If the **Basic** mode is selected the air conditioning systems will be managed on the system only using the 20 commands saved on the 3456 interface.
2. Select an object of the Display area.
3. A personalised description of the page can be entered in the "**Page properties**" area.
4. Inside the "**Selected item properties**" area it will be possible to enter a customised description. Click [...] to configure the selected splitter.

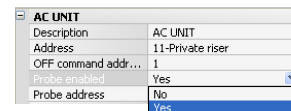
INTERNAL AC UNIT configuration



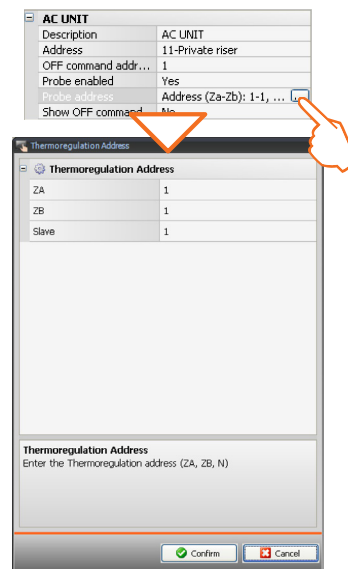
- **A = Room:** select the value corresponding to the configurator connected to **A** on the device to control.
- **PL = Light Point:** select the value corresponding to the configurator connected to **PL** on the device to control.
- **Level:** select the level the device belongs to (Private riser = level 3, or Local BUS = level 4). If Level = Local Bus is selected, the interface field appears. In this case, select the logical expansion interface for the object to control.




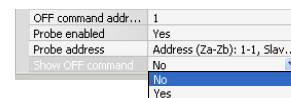
- Enter the number of the control configured as OFF on the 3456 interface;



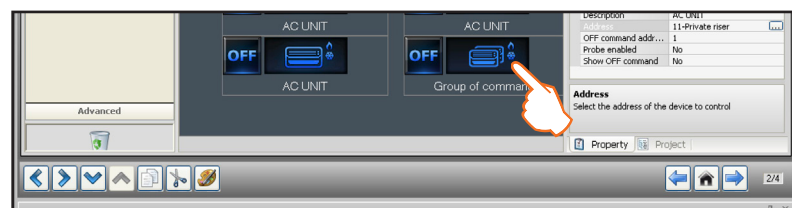
- Enable or disable the SLAVE probe;



- Click  to configure the address of the SLAVE probe



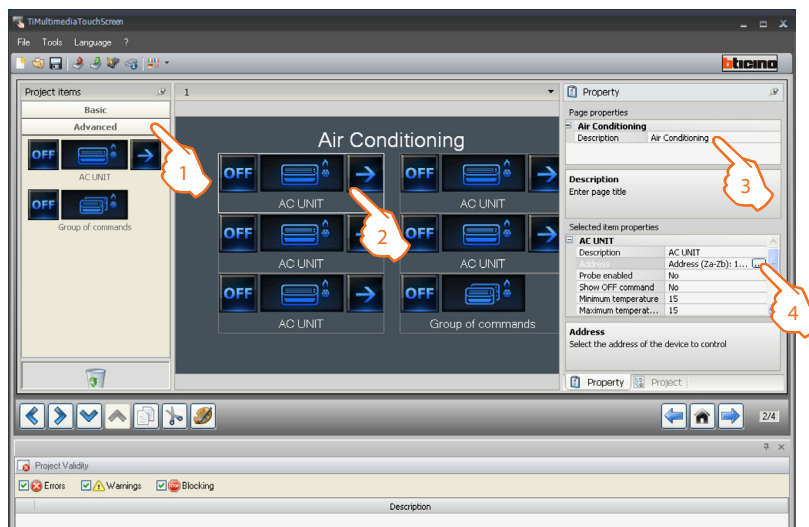
- Select Yes to display the OFF control associated to the splitter on the Multimedia Touch Screen




By dragging the “Group of commands” object to the Display area, it will be possible to customise the description in the “Selected item properties” area. This command will be displayed on the Multimedia Touch Screen and can be used to switch off all the splitters of the MY HOME system.

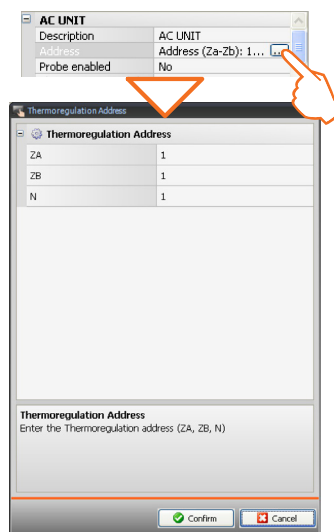
AIR CONDITIONING configuration - advanced mode

In the page it is possible to include all the AIR CONDITIONING objects installed in the system. Drag the objects in the "Project items" area to the "Display" area, or simply double click the function with the mouse.



1. Select the configuration mode. When the **Advanced** mode is selected, the air conditioning systems will be managed by the MY HOME system directly as if a splitter remote control was used, or in any case using the 20 commands saved on the 3456 interface
2. Select an object of the Display area.
3. A personalised description of the page can be entered in the "**Page properties**" area.
4. Inside the "**Selected item properties**" area it will be possible to enter a customised description. Click  to configure the selected splitter.

INTERNAL AC UNIT configuration



- **ZA = Zone address:** select the value corresponding to the configurator connected to ZA in the 3456 interface.
- **ZB = Zone address:** select the value corresponding to the configurator connected to ZB in the 3456 interface.
- **N:** select N entering the corresponding interface no. between 0 (none) and 9 (configurator 9).

AC UNIT	
Description	AC UNIT
Address	Address (Za-Zb): 1-1, N...
Probe enabled	Yes
Probe address	No
Show OFF command	Yes

- If the SLAVE probe is present select Yes;

AC UNIT	
Description	AC UNIT
Address	Address (Za-Zb): 1-1, N...
Probe enabled	Yes
Probe address	Address (Za-Zb): 1-1, N...
Show OFF command	Yes

Thermoregulation Address

Thermoregulation Address

ZA	1
ZB	1
Slave	1

Thermoregulation Address

Enter the Thermoregulation address (ZA, ZB, N)

Confirm Cancel

- inserire Enter the SLAVE probe address in progressive order from 1 (SLAVE 1) to 9 (SLAVE 8);

Probe enabled	Yes
Probe address	Address (Za-Zb): 1-1, S...
Show OFF command	Yes
Minimum temperature	No

- Select Yes to display the OFF control associated to the splitter on the Multimedia Touch Screen

Probe enabled	Yes
Probe address	Address (Za-Zb): 1-1, S...
Show OFF command	Yes
Minimum temperature	15

15
16
17
18
19
20
21
22
23
24
25
26
27

- Enter the minimum temperature for the splitter

Probe address	Address (Za-Zb): 1-1, S...
Show OFF command	Yes
Minimum temperature	15
Maximum temperat...	15

15
16
17
18
19
20
21
22
23
24
25
26
27

- Enter the maximum temperature for the splitter

Probe address	Address (Za-Zb): 1-1, S...
Show OFF command	Yes
Minimum temperature	15
Maximum temperat...	15
	0.5

- Enter the increase step for the temperature values (0,5 °C or 1 °C)

Selected item properties	
Automatic mode	Yes
Cooling mode	Yes
Heating mode	Yes
Dry mode	Yes
Fan mode	Yes
Fan speed presence	Yes
Automatic mode	Yes
High mode	Yes
Medium mode	Yes
Low mode	Yes
Swing presence	Yes
ON	Yes
OFF	Yes

- Select Yes if the splitter is required to perform the following functions:

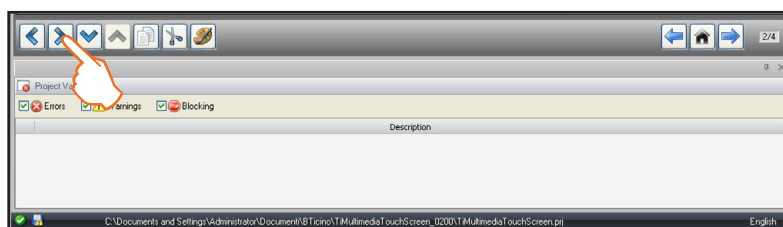
- Automatic;
- Cooling;
- Heating;
- De-humidifier;
- Ventilation;
- Fan speed presence:
 - Automatic;
 - High;
 - Medium;
 - Low;
 - Silent;
- Swing presence




The configuration of the splitter parameters depends on the functions of each individual splitter installed.




By dragging the “Group of commands” object to the Display area, it will be possible to customise the description in the “Selected item properties” area. This command will be displayed on the Multimedia Touch Screen and can be used to switch off all the splitters of the MY HOME system.

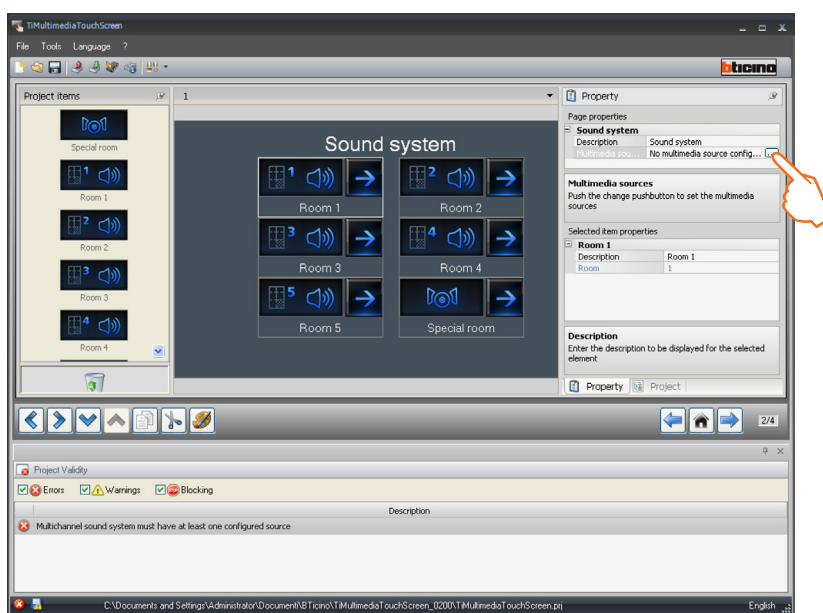


Once the Consumption/Production Display page configuration operation has been completed, click  to go to the following page.


5.7 Sound system

Sound system gives the user the possibility of selecting and broadcasting the sound on several rooms at the same time; differently from **Sound system**, **Multichannel sound system** gives the opportunity of having different music broadcasted in each room at the same time.

Drag an **"Room"** item to control one individual **Amplifier** or an **Amplifier assembly** within the room (with the same configurator in A). Drag a **"Special environment"** item to control an **Amplifier assembly**, either in the same or in different rooms, or to control all the amplifiers installed on the system (**general**). A personalised description of the page can be entered in the **"Page properties"** area; click  to set the system multimedia sources (8 maximum).

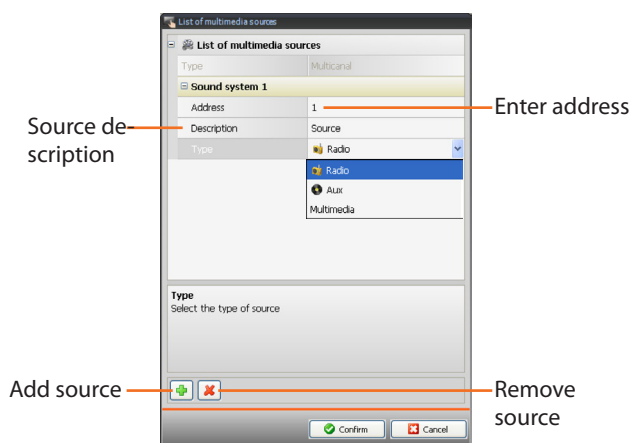



Configuration of the **List of multimedia sources**:

- Click  to add a new audio source. The **Radio** source refers to the Tuner, the **Aux** source to an external source (e.g.: CD player) connected to the Stereo control, or to a RCA address. The **Multimedia** source refers to the Multimedia Touch Screen that represents the source of the system.



If Multimedia Touch Screen is used as a sound system source (see par. 3.3), the same address may not be used for another source.

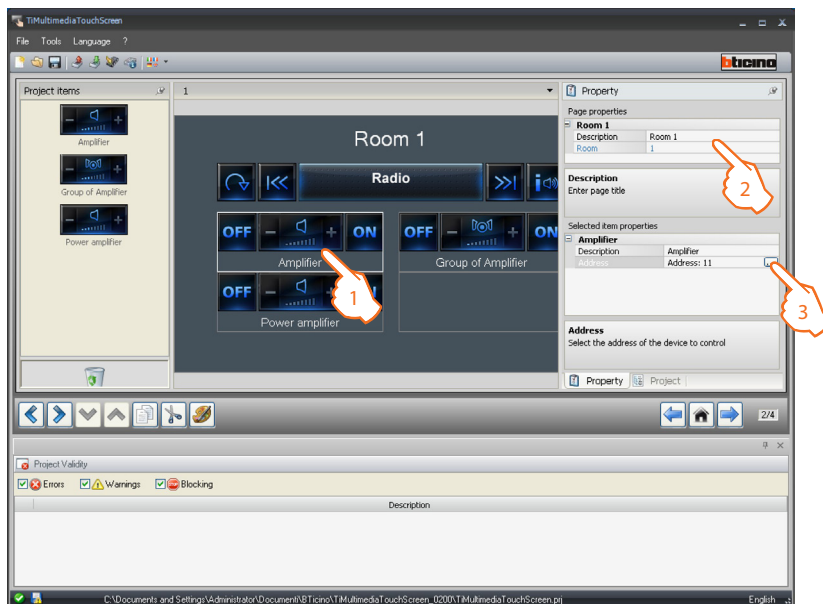



Once the audio sources have been defined, the connected rooms must be configured. Click  to proceed to the configuration of the individual rooms and the special room.

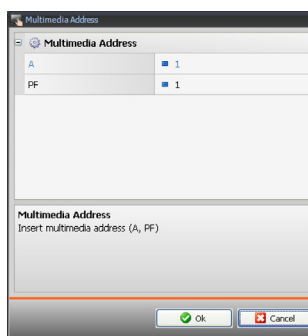


Room configuration:

Drag the objects from the “**Project items**” area to the “**Display**” area, or simply double click on the object with the mouse.



1. Select an object of the Display area.
2. A personalised description of the page can be entered in the “**Page properties**” area.
3. In the “**Selected item properties**” area click  to set the address of the amplifier selected.



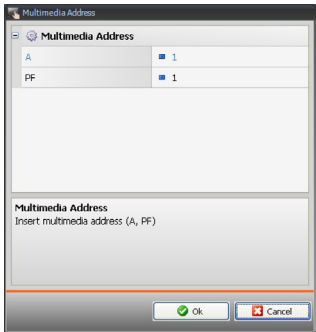
- **PF = Loudspeaker:** select the value corresponding to the configurator connected to PF of the device to be controlled.

Amplifier assembly configuration:

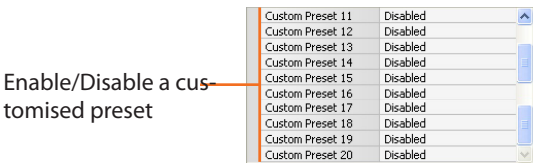



- **PF = Loudspeaker:** select the value corresponding to the configurator connected to PF of the device to be controlled.

Power amplifier configuration



- **PF = Speaker point:** select the value corresponding to the configurator connected to PF on the device to control.

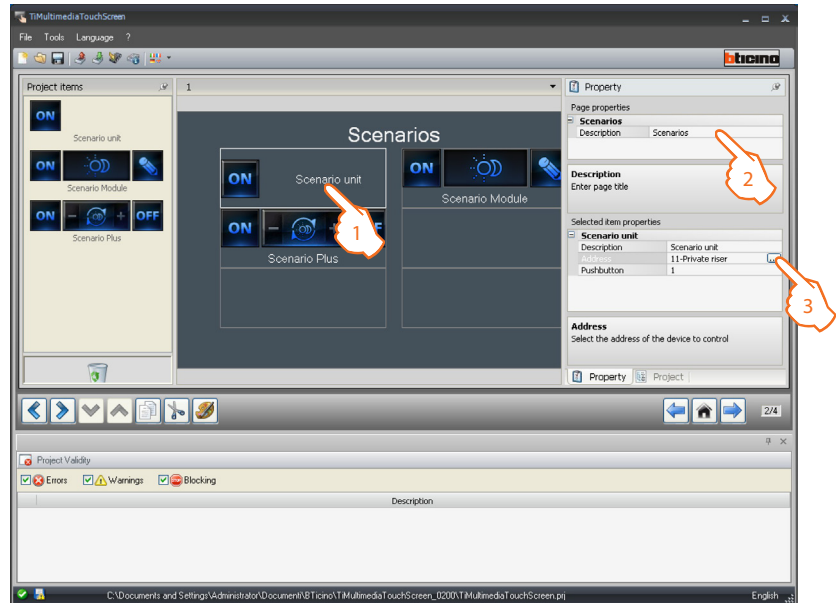



Once the sound system page configuration operation has been completed, click  to go to the next page.



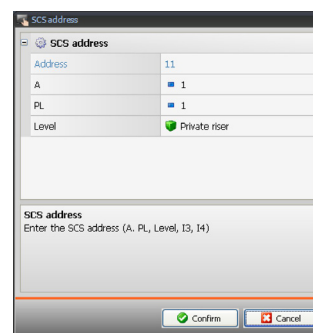
5.8 Scenarios

Drag the objects from the “Project items” area to the “Display” area, or simply double click on the object with the mouse.



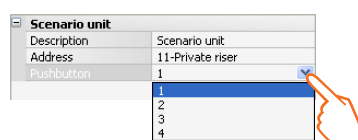
1. Select an object of the Display area.
2. A personalised description of the page can be entered in the “Page properties” area.
3. A personalised description of the selected object may be entered in the “Selected item properties” area.
Click  to configure the scenario (scenario module address).

Scenario configuration:

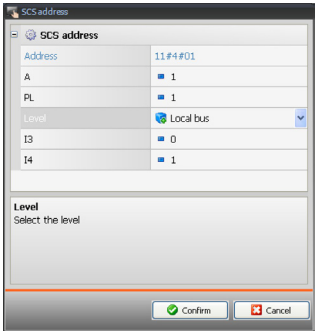


- **A = Room:** select the value corresponding to the configurator connected to A of the device to be controlled.
- **PL = Light point:** select the value corresponding to the configurator connected to PL of the device to be controlled.

Pushbutton: select the number corresponding to the pushbutton




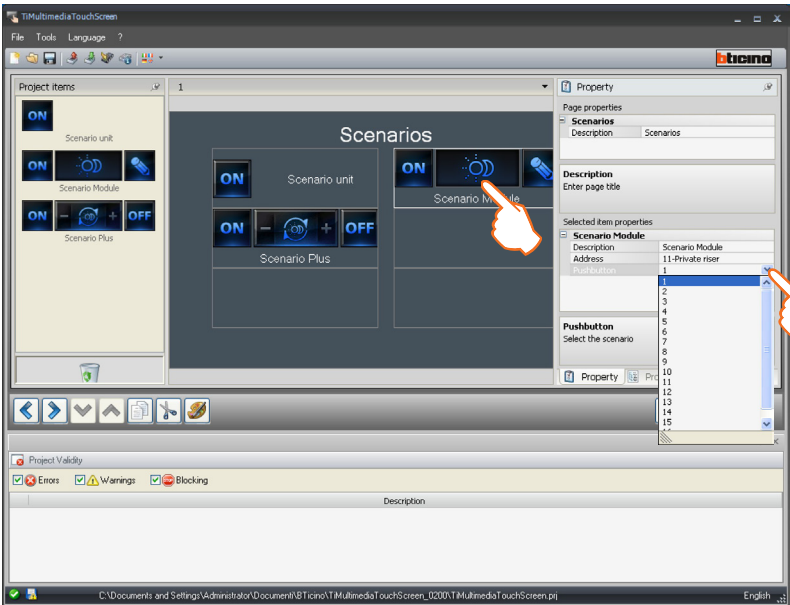
- **Level:** select the level it belongs to (Private riser = level 3, or Local Bus = level 4).
If Level = Local Bus is selected, the interface field appears.
In this case select the logic expansion interface address where the object to control is located.



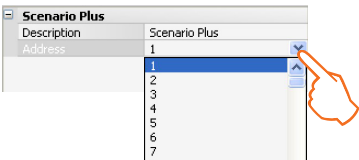
Scenario configuration (Scenario module):

- After configuring the address select the corresponding one in the scenario module, among the suggested ones.


 The scenario module may be used to save up to 16 scenarios



Scenario Plus configuration



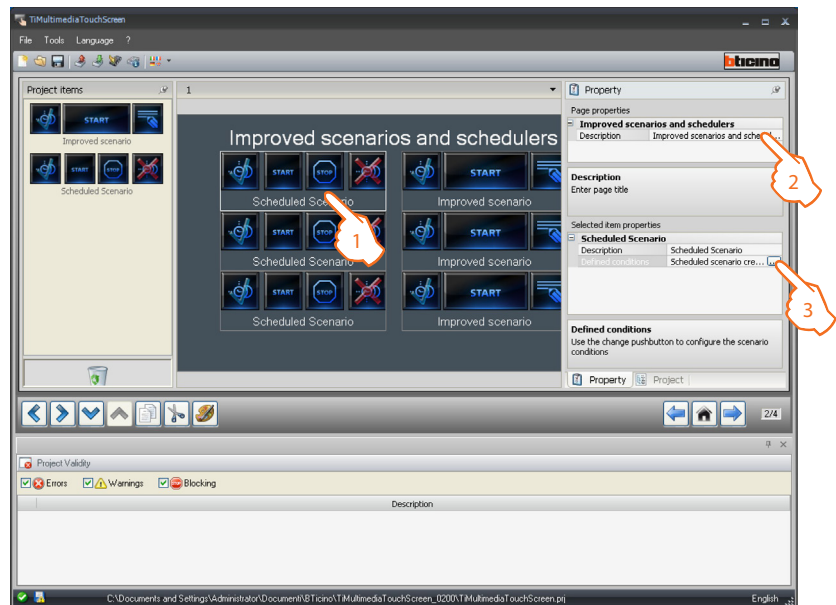
enter the address number of the Scenario PLUS

Once the scenario page configuration operation has been completed, click  to go to the following page.



5.9 Improved scenarios and schedulers

Drag the objects from the “Project items” area to the “Display” area, or simply double click on the object with the mouse.



1. Select an object of the Display area.
2. A personalised description of the page can be entered in the “Page properties” area.
3. A personalised description of the selected object may be entered in the “Selected item properties” area.

Advanced scenario configuration:

The “Advanced scenarios” object enables to create a conditioned control.

The condition must be defined (hours, minute).


It is not necessary to set the Device Condition

If set, this may be referred to:

- a Light actuator
- a 10 Dimmer
- a 100 Dimmer
- una Temperature control (of controlled zone, external sensor or non-controlled zone)
- an Amplifier
- an Auxiliary device

Example of advanced scenario:

if at 20:00 (**time condition**), the amplifier configured with A1 LS1 is off (**device condition**), an on control is sent to the amplifier configured as A1 LS1 (**OPEN control**).


1. Click  to access the configuration of an advanced scenario.

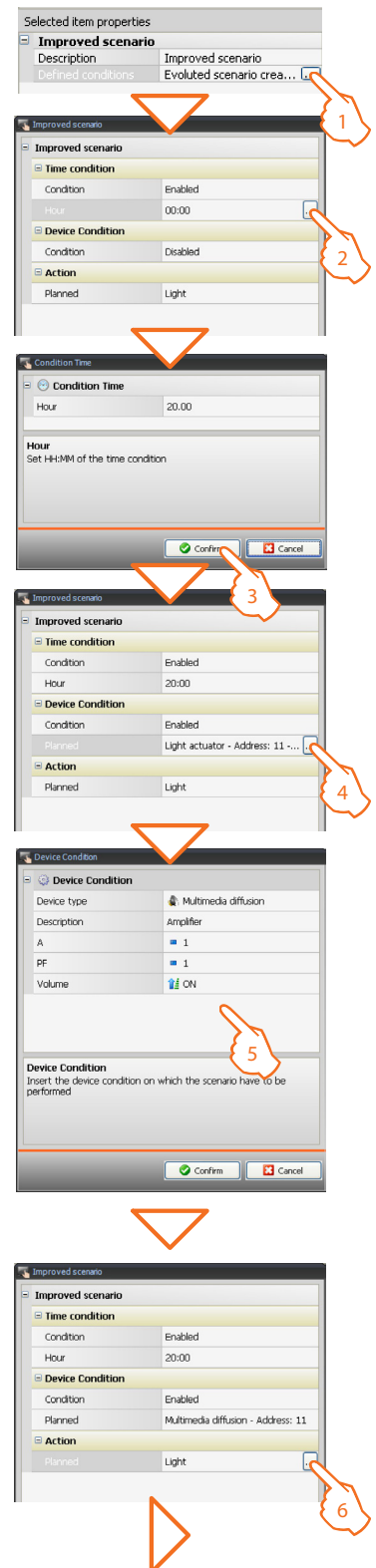
2. Click  to set the **Time Condition** (if present).

3. Select the time interval (hours and minutes).

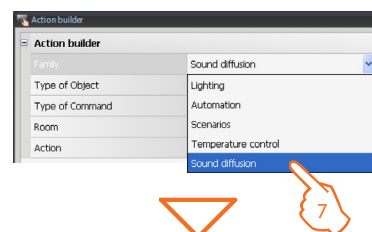
4. Click  to set the **Device Condition** (if present).

5. Select the Device Type and enter a customised description.
A = Room: select the value corresponding to the configurator connected to **A** of the device to be controlled.
PF = Loudspeaker: select the value corresponding to the configurator connected to **PF** of the device to be controlled.
Level: select the level it belongs to (Private riser = level 3, or Local Bus = level 4).
 If Level = Local Bus is selected, the interface field appears. In this case select the logic expansion interface address where the object to control is located.
 Now select the device status (**ON** or **OFF**).

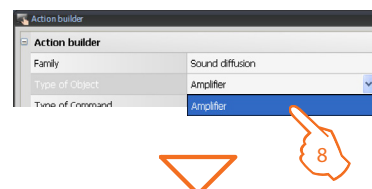
6. Click  to set the control that will be generated when the previous conditions occur.



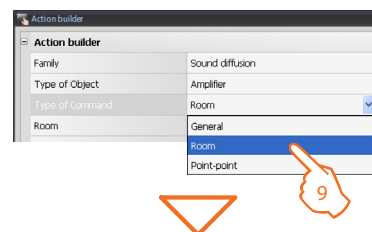
7. Generate the OPEN control.
Select the family the control that will be generated belongs to.



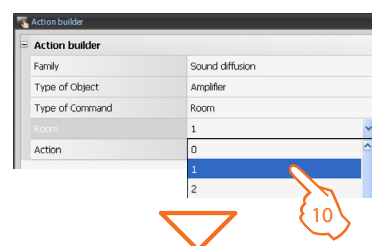
8. Select the type of object.



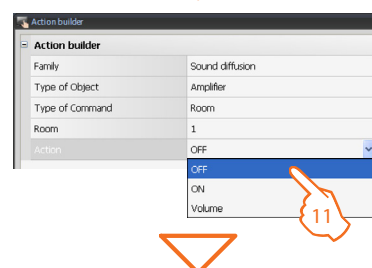
9. Select the type of control to send to the object.



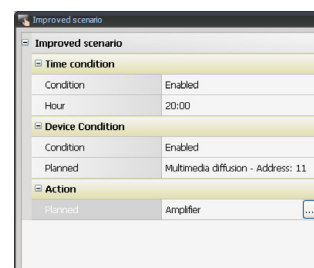
10. Configure the object address.



11. Select the action to send to the object



12. The OPEN control has been correctly created.



Scheduled scenario configuration:

The “**Scheduled scenario**” object enables control of a programmed scenario of the Scenario Programming device.

It is possible to simulate CEN type controls configured in the scenario.

The four possible actions are:

- **Start**
- **Stop**
- **Enable**
- **Disable**

The **Start** and **Stop** commands are start/stop conditions of the scenario.

The **Enable** and **Disable** controls may be configured in pairs. They enable activation/deactivation of the control without starting it.

If a forwarding condition occurs, the actions of the scenario will be performed.

All Enable, Disable, **Start** and **Stop** commands must correspond to the same ones set in the scenario as specified in the Scenario Programmer.

1. Click  to access the configuration of a scheduled scenario.

2. Click  to set the SCS address of the object.

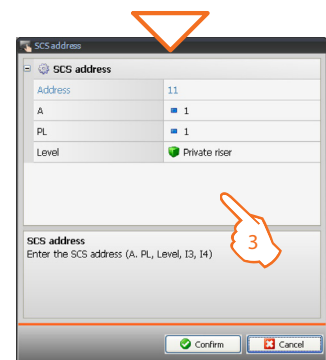
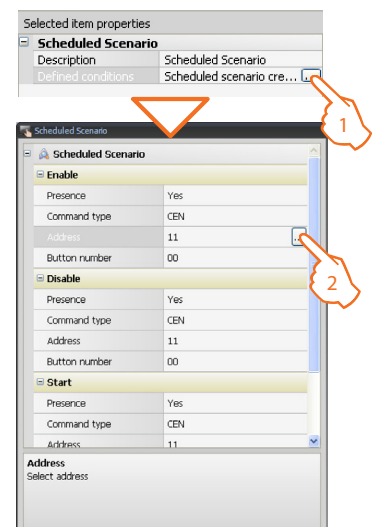
3. Select the Device Type and enter a customised description.

A = Room: select the value corresponding to the configurator connected to **A** of the device to be controlled.


PL = Light Point: select the value corresponding to the configurator connected to **PL** of the device to be controlled.

Level: select the level it belongs to (Private riser = level 3, or Local Bus = level 4).

If Level = Local Bus is selected, the interface field appears. In this case select the logic expansion interface address where the object to control is located.



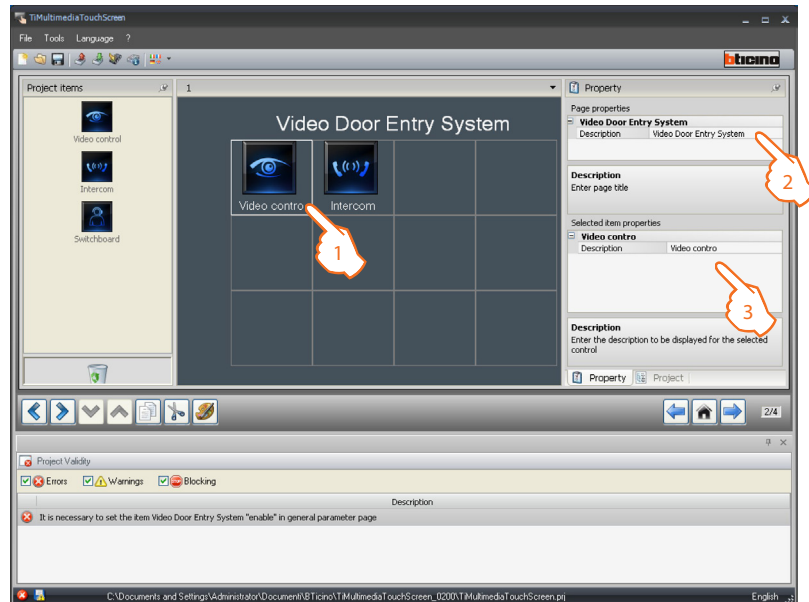
Repeat the same operations for the **Stop**, **Activate/Deactivate** conditions.

Once the “**Improved scenarios and schedulers**” page configuration operation has been completed, click  to go to the next page.




5.10 Video door entry system

Drag the objects from the “Project items” area to the “Display” area, or simply double click on the object with the mouse.

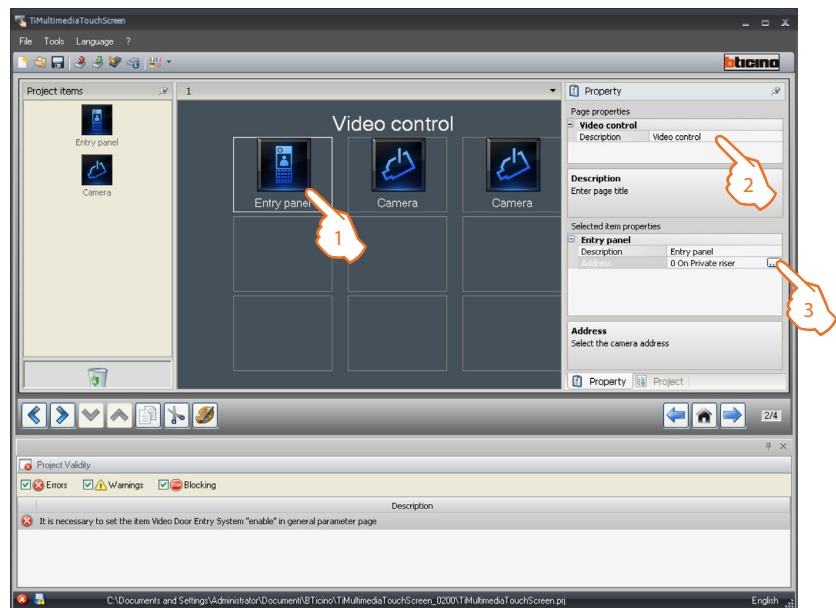



1. Select an object of the Display area:
 - CCTV (Video control);
 - Intercom;
 - Call exclusion.
2. A personalised description of the page can be entered in the “Page properties” area.
3. A personalised description of the selected object may be entered in the “Selected item properties” area.

Once the customising operation has been completed, click  to go to the page for the configurations of each individual object connected to the video door entry system page.

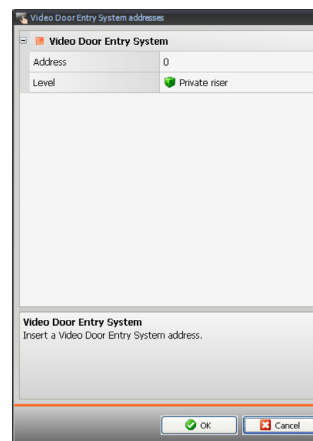


CCTV (Video control)



1. Select an object of the Display area.
 2. A personalised description of the page can be entered in the "Page properties" area.
 3. A personalised description of the selected object may be entered in the "Selected item properties" area.
- Click  to configure the "Entrance Panel/Camera" object.

Entrance Panel/Camera configuration:

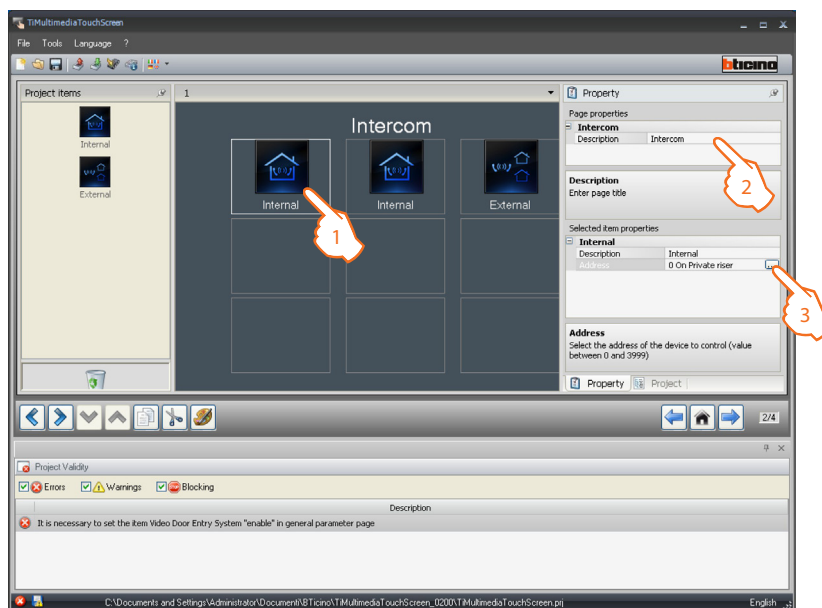


- Select the address corresponding to the configurator connected to the device to be controlled.


Once the CCTV page configuration has been completed, click  to go to the next page.



Intercommunicating (internal or external)



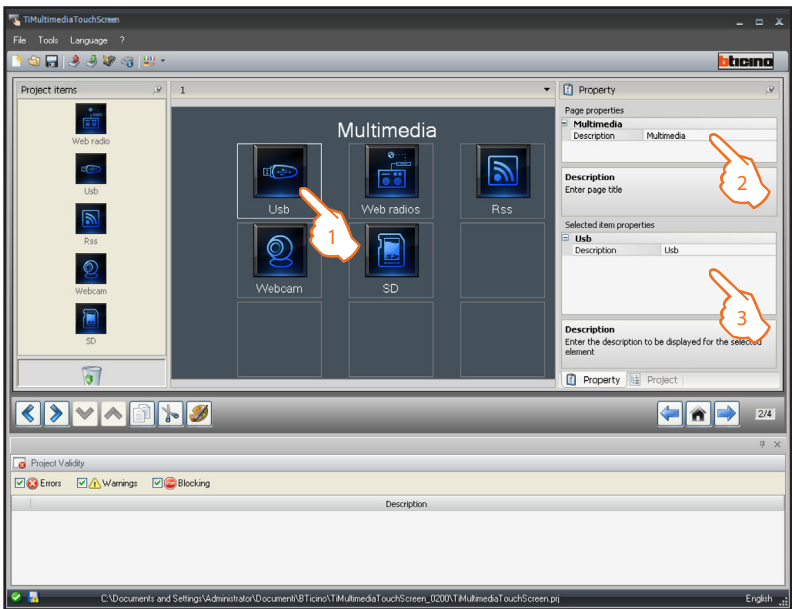
1. Select an object of the Display area.
2. A personalised description of the page can be entered in the **"Page properties"** area.
3. A personalised description of the selected object may be entered in the **"Selected item properties"** area, and the address of the handset to call (from 1 to 3999) may be entered.

Once the Intercom page configuration operation has been completed, click  to go to the next page.





5.11 Multimedia

Drag the objects from the “Project items” area to the “Display” area, or simply double click on the object with the mouse.



1. Select an object of the Display area:
2. A personalised description of the page can be entered in the “Page properties” area.
3. A personalised description of the selected object may be entered in the “Selected item properties” area.

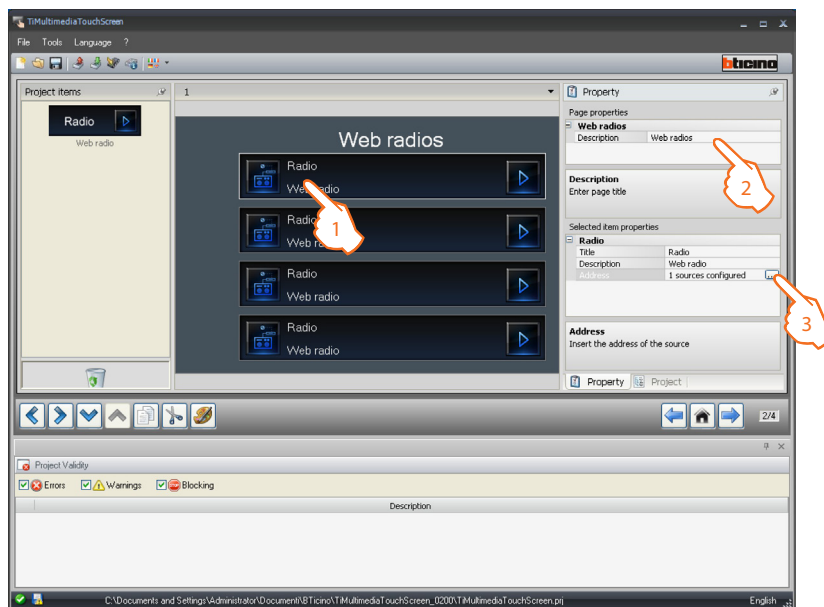
 USB and SD objects do not need configuration.


Once the customisation operation has been completed, click  to go to the page for the configuration of each individual object of the Multimedia page.




Web radio

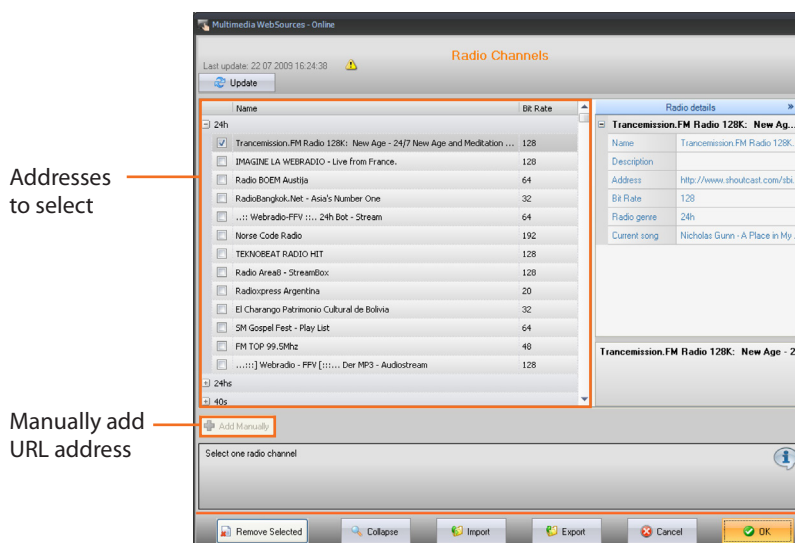
Drag the “Web radio” object in the “Project items” area to the “Display” area, or simply double click on the object with the mouse.



1. Select an object of the Display area:
2. A personalised description of the page can be entered in the “Page properties” area.
3. A personalised description of the selected object may be entered in the “Selected item properties” area.
Click  to configure the “Web radio” object.

Configure the **Web radio Address**:

TiMultimediaTouchScreen offers a library of preset addresses divided into categories (Pop, Rock, Disco etc.); To associate an address to the select Web radio click the .




Addresses
to select

Manually add
URL address

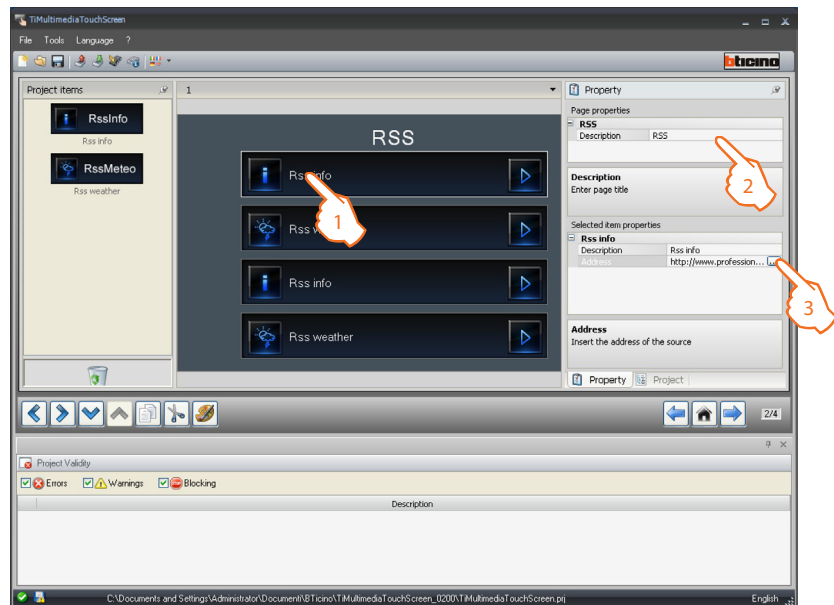



The URL address is not
the browser address of the
WEB page of the radio.

Once the Web radio configuration operation has been completed, click  to go to the following page.

RSS

Drag the objects from the “Project items” area to the “Display” area, or simply double click on the object with the mouse.

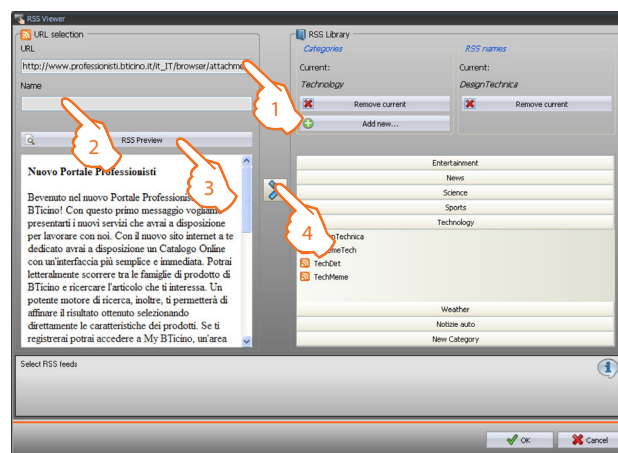



1. Select an object of the Display area:
2. A personalised description of the page can be entered in the “Page properties” area.
3. A personalised description of the selected object may be entered in the “Selected item properties” area.
Click  to configure the “RSS info/RSS weather” object.

RSS address configuration:

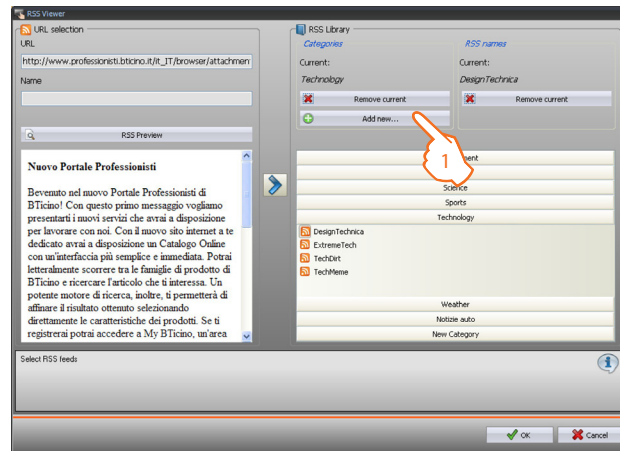
TiMultimediaTouchScreen offers a library of preset addresses divided into categories (entertainment, news, sciences, sport, technology, weather); in addition to these addresses, new ones may be added by adding new categories.

Create a new address

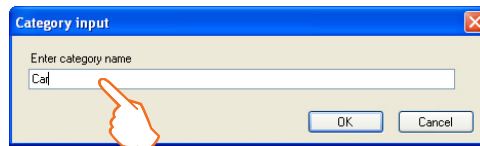


1. Enter a new address (URL).
2. Enter a customised description for the address created.
3. Display a preview of the RSS address created.
4. Click  to move the address to the selected category.

Create a category

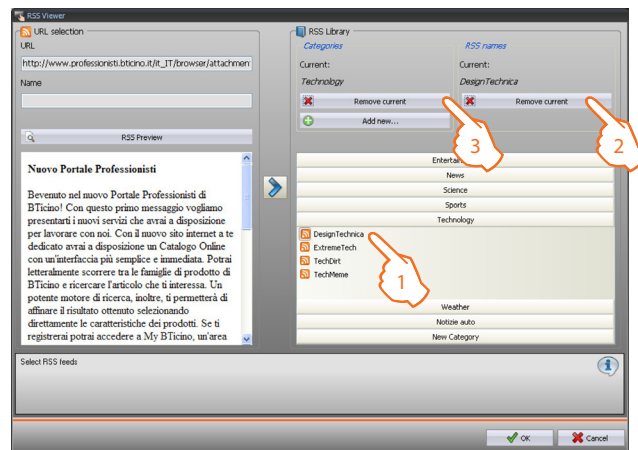




1. Click  to enter a new customised category..




Enter a name for the category created.

Remove an address or a category



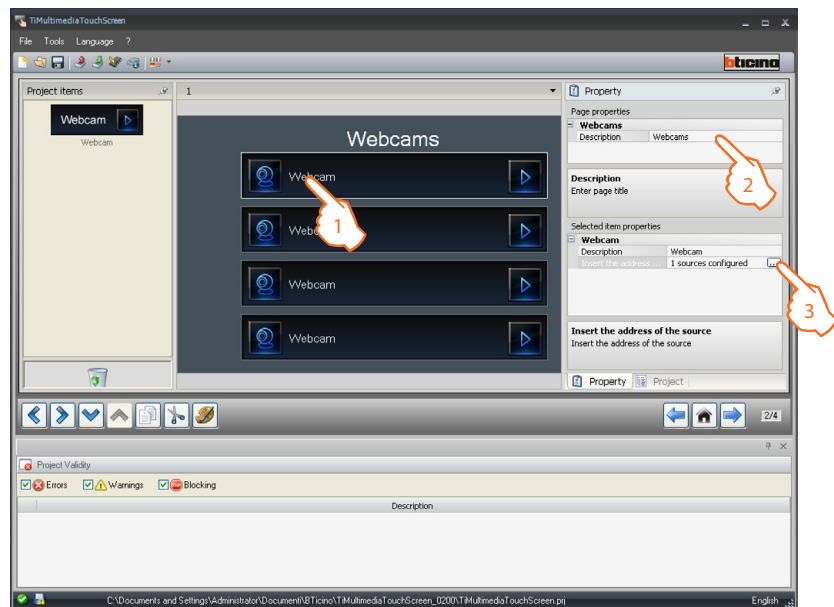
1. Select an address or a category.
2. Click  to remove the selected address.
3. Click  to remove the selected category.

Once the RSS page configuration operation has been completed, click  to go to the next page.




Webcam

Drag the “Webcam” object in the “Project items” area to the “Display” area, or simply double click on the object with the mouse.

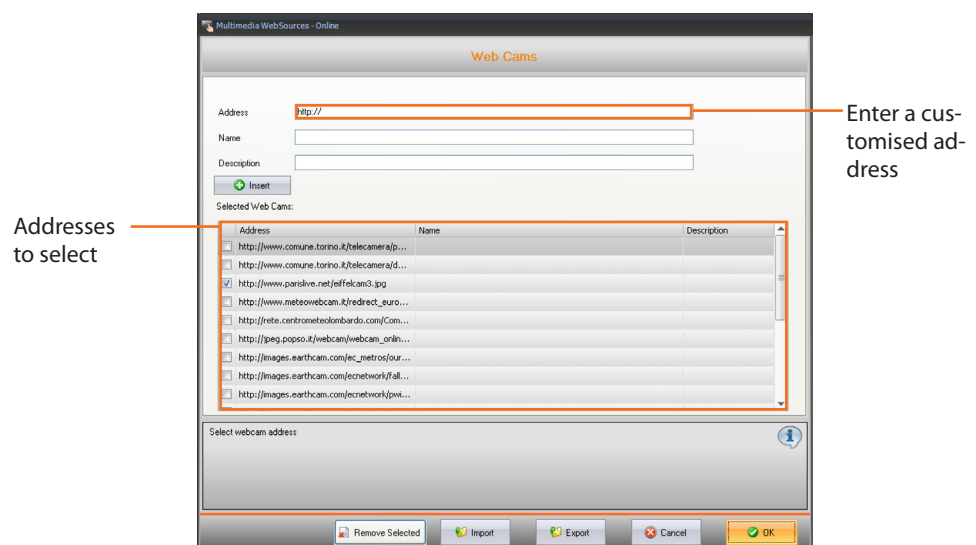



1. Select an object of the Display area:
2. A personalised description of the page can be entered in the “Page properties” area.
3. A personalised description of the selected object may be entered in the “Selected item properties” area.

Click  to configure the “Webcam” object.

Configuration of the Webcam Address:

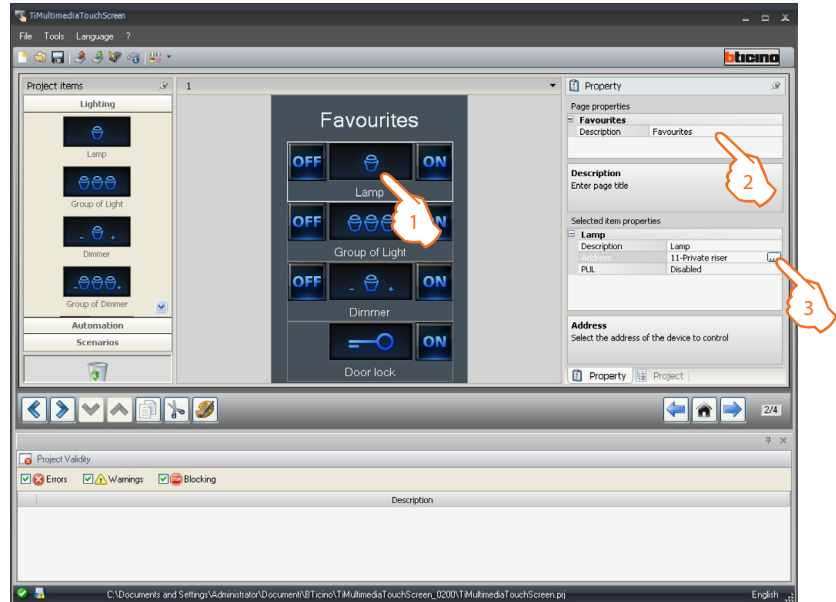
TiMultimediaTouchScreen offers a library of preset addresses divided into categories (entertainment, news, sciences, sport, technology, weather);



Once the Web radio page configuration operation has been completed, click  to go to the next page.

5.12 Favourites

Drag the objects from the “Project items” area to the “Display” area, or simply double click on the object with the mouse.




1. Select an object of the Display area:
2. A personalised description of the page can be entered in the “Page properties” area.
3. A personalised description of the selected object may be entered in the “Selected item properties” area. For some types of actuators (Lamp and Dimmer) enabling/disabling of PUL is required; select enabled if the actuator being configured is physically or virtually configured as PUL. Click [...](#) to configure the automatism (see chapter 5.3).

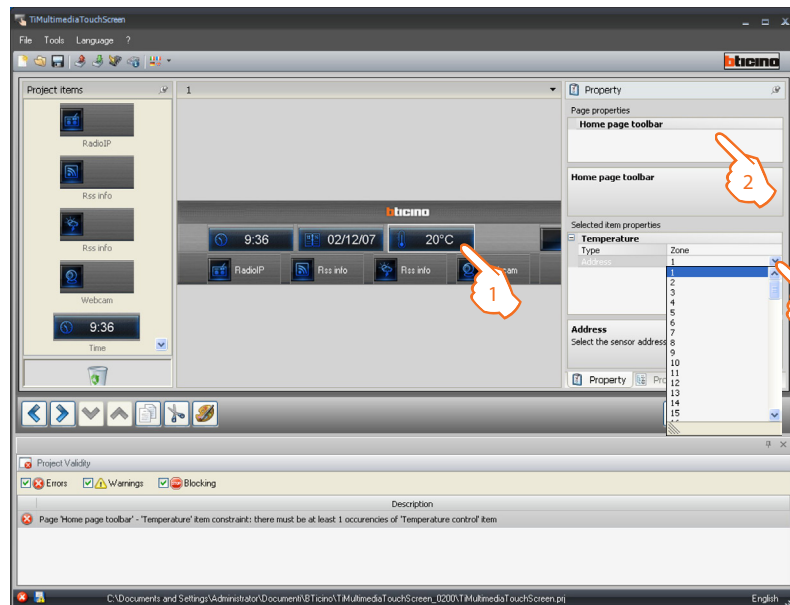
Once customisation and configuration of the favourite page has been completed, click  to go to the next page.




5.13 Home page toolbar

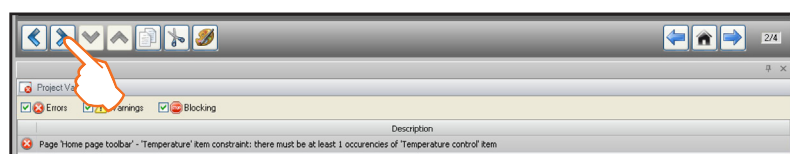
 The "Settings" object is always present in the Home Page and cannot be deleted.

Drag the objects from the "Project items" area to the "Display" area, or simply double click on the object with the mouse.



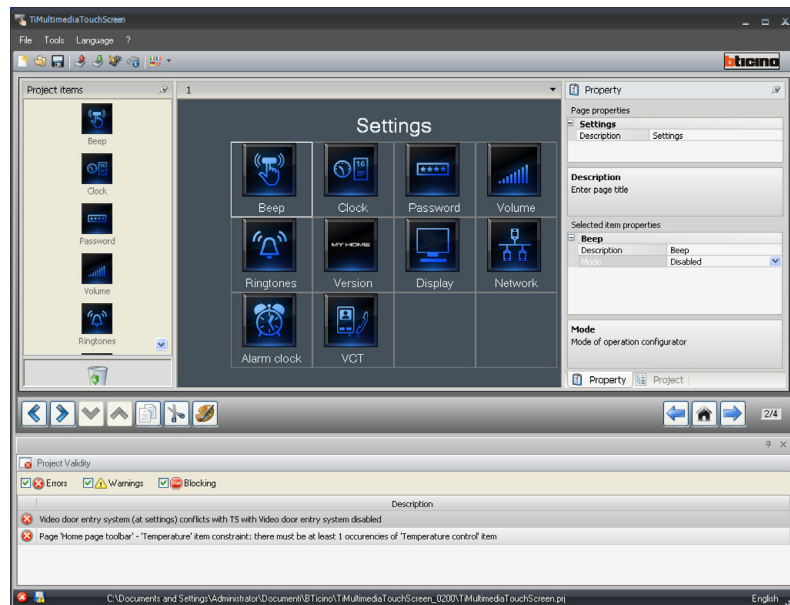
1. Select an object of the Display area:
2. A personalised description of the page can be entered in the "Page properties" area.
3. The selected object may be configured in the "Selected item properties" area;
Example: to display the temperature of one of the zone of the system directly on the Home Page enter the zone address; enter the address of a Web Radio or a Webcam to set a direct connection from the Home Page.

Once the customisation and configuration of the toolbar Home Page has been completed, click  to go to the next page.

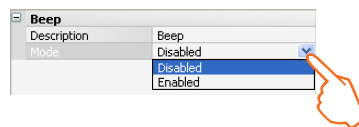


5.14 Settings

Drag the objects from the “Project items” area to the “Display” area, or simply double click on the object with the mouse.



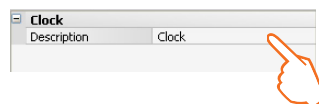
Beep configuration:



It gives the possibility to enter a customised description of the **Beep** object, and **Enable** or **Disable** the sound emitted when Touch Screen is used.



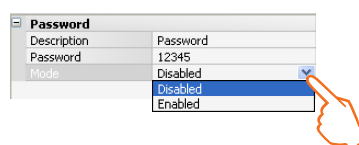
Date and time configuration:



It gives the possibility to enter a customised description of the **Date and time** object.



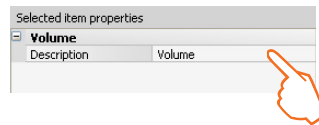
Password Configuration:



It gives the possibility to enter a customised description of the **Password** object, and to enter a preferred numerical password, which can then be disabled or enabled.



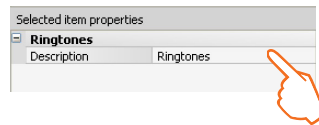
Volume configuration:



It enables entering a customised description of the **Volume** object.



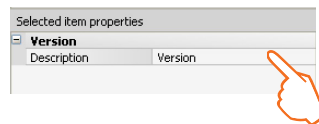
Ringtones configuration:



It enables entering a customised description of the **Ringtones** object. .



Version configuration:



It enables entering a customised description of the **Version** object.



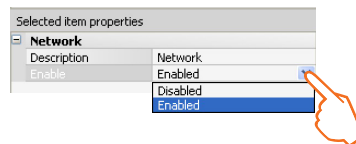
Display configuration:



It enables entering a customised description of the **Display** object.



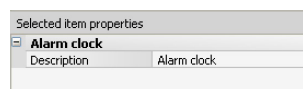
Network configuration:



It enables enabling/disabling and entering a customised description of the **Network** object.



Alarm clock configuration:




It enables entering a customised description of the **Alarm clock** object.



Video door entry system configuration:

Selected item properties	
VCT	
Description	VCT

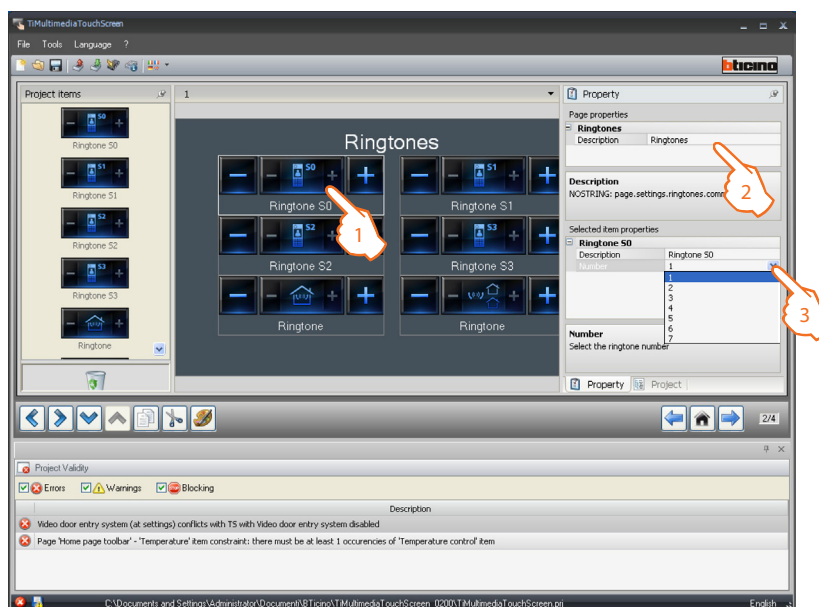
It enables entering a customised description of the **Video door entry system** object.

Once the **Beep**, **Date and time**, **Password** and **Volume** configuration operations have been completed, click  to go to the next page.



Ringtones configuration:

Drag the objects from the **"Project items"** area to the **"Display"** area, or simply double click on the object with the mouse.



1. Select an object of the Display area:
2. A personalised description of the page can be entered in the **"Page properties"** area.
3. Inside the **"Selected item properties"** area it will be possible to enter a customised description of the selected object and select the associated ringtones.

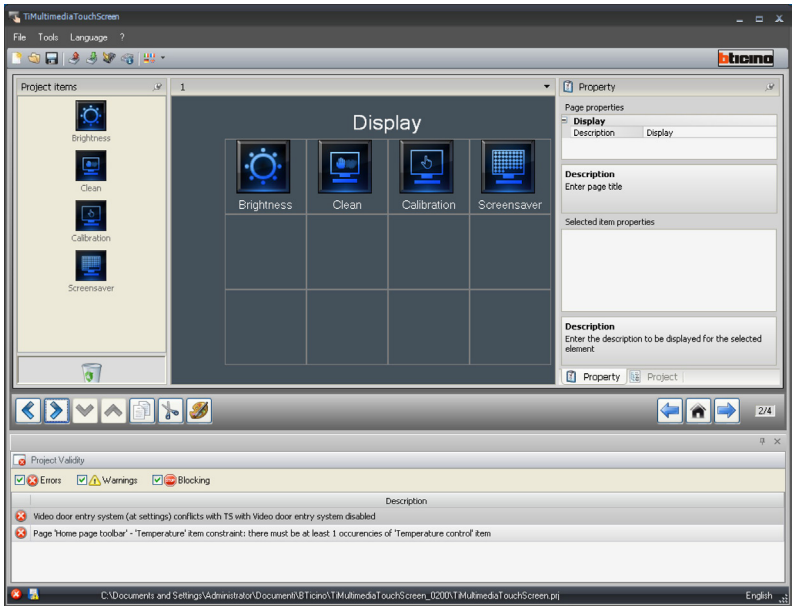
Once the configuration of the bells has been completed, click  to go to the next page.



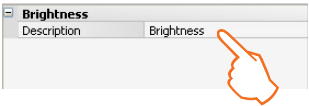


Screen (Display) configuration:

Drag the objects from the “Project items” area to the “Display” area, or simply double click on the object with the mouse.



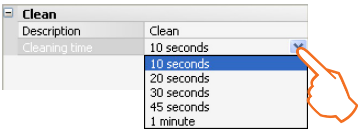
Brightness:



It gives the possibility to enter a customised description of the **Brightness** object.



Clean screen:

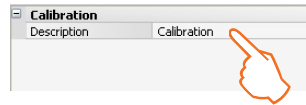


Never clean using solvents, thinners etc., or abrasive products. Only use the cloth provided.

- **Description:** It gives the possibility to enter a unique description of the **Clean screen** object.
- **Cleaning time:** it gives the possibility to select a time intervals, from 10 seconds to 1 minute. The Touch screen will be deactivated for the selected period, to enable cleaning.



Calibration:



It gives the possibility to enter a unique description of the **Volume** object.



Screensaver:

it enables selecting a customised description for the Screensaver object, as well as the **Screensaver** type (none, time, text, photos).

None

Screensaver	
Description	Screensaver
Type	None
Screen off	30 seconds

Time

Screensaver	
Description	Screensaver
Type	Time
Wait	30 seconds
Screen off	30 seconds


Text

Screensaver	
Description	Screensaver
Type	Text
Wait	30 seconds
Screen off	30 seconds
Text	Bticino

Photos

Screensaver	
Description	Screensaver
Type	Photos
Wait	30 seconds
Screen off	30 seconds
Time	7 seconds

- **Switch screen off:** to select the time delay (from 30 seconds to 5 minutes max) after which the Multimedia Touch Screen goes in stand-by. The screen will go black until the Multimedia Touch Screen glass is touched again.
- **Wait:** to select the time delay (from 30 seconds to 2 minutes max) before the activation of the screensaver.
- **Time:** manually enter a time from 2 to 60 seconds for playback between one image and the next of the screensaver.
- **Text:** manually enter a text message, which will be displayed on the Multimedia Touch Screen.

Once the configuration of the settings has been completed click  to set the device configuration parameters (see chapter 3.3).

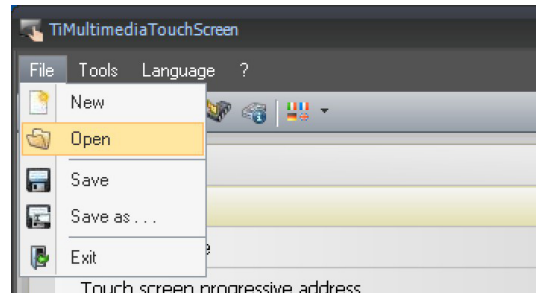


6. Open project

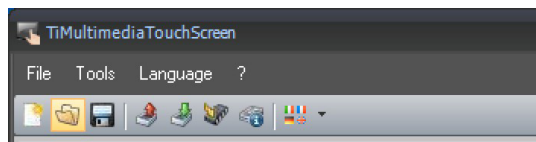
If the configuration file has been saved, this function enables selecting it to perform any changes, or for downloading

Open a project using:

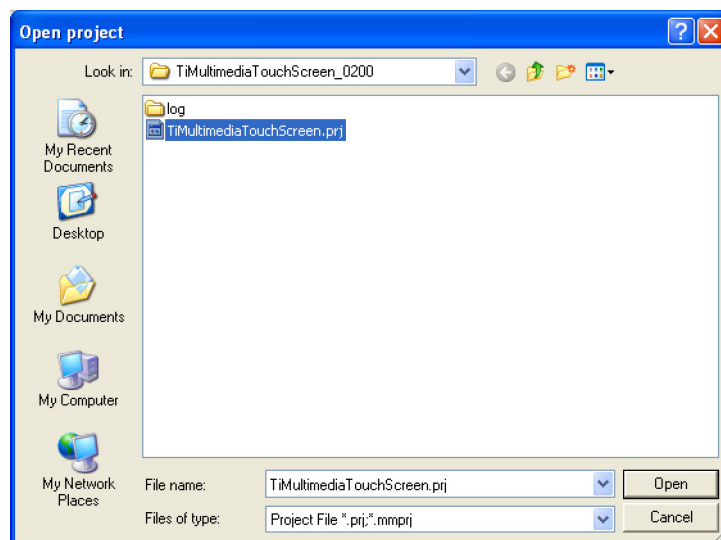
- **Open**
"File" pull-down menu;



- **Open**
Control bar



A window appears, where the user can search for the folder containing the project file (.prj) to open.



Select "Open" to open the project.

7. Project Download and Upload



Warning: ensure that the PC where TiMultimediaTouchScreen is installed and the Touch Screen have compatible IP addresses

Once the project configuration stage has been completed, the file must be saved in the working directory and then sent to the Multimedia Touch Screen device (Download).

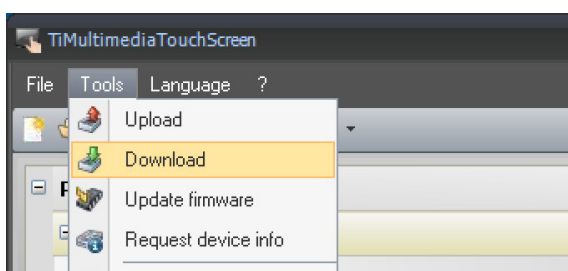
It is also possible to receive the configuration file from the device (Upload function) to perform checks and/or make changes.

In both cases, it will be necessary to connect the PC to the Multimedia Touch Screen using the serial cable 335919 or 3559, connected to the PC serial port and a specific connector, or a "crossed" type cable connected to the LAN network connector of the Multimedia Touch Screen, and to the Ethernet card of the PC. In alternative, remote update is also possible, if the IP address and the OPEN password are known.

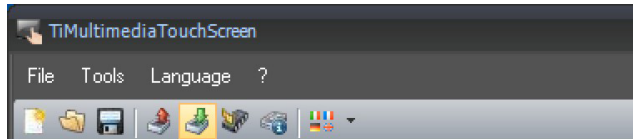
7.1 Download

To activate this function:

- **Download**
"Tools" pull-down menu



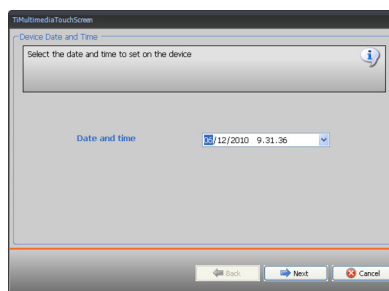
- **Download**
Control bar



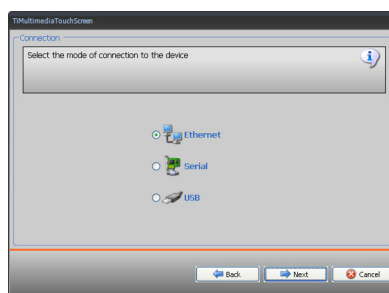
A window appears, where the user can search for the folder containing the project file to be selected for download.

TiMultimediaTouchScreen

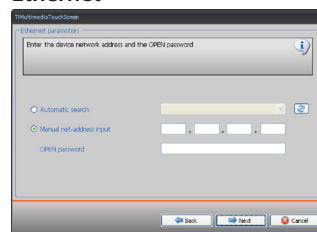
When **Download** is selected, a window appears, prompting the user to set the Date and Time.



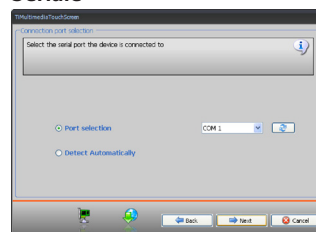
Click **Next** to select the connection mode between the Multimedia Touch Screen and the PC



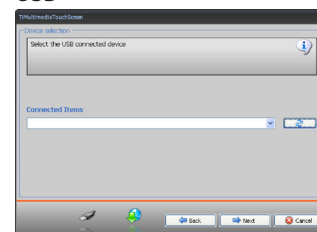
Ethernet



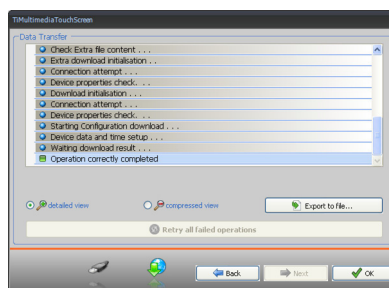
Serial



USB



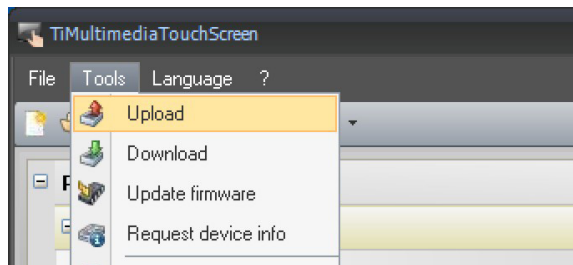
Select **Next**. The project will be transferred to the Multimedia Touch Screen.



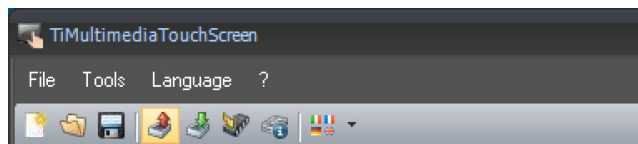
7.2 Upload

To activate this function:

- **Upload**
"Tools" pull-down menu



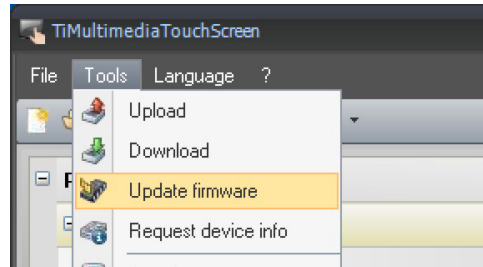
- **Upload**
Control bar



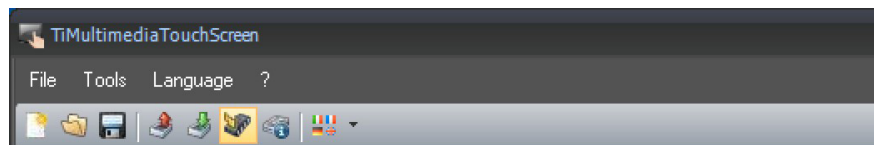
A window appears, for the selection of the mode of connection to the Multimedia Touch Screen (for the connection procedures see paragraph 7.1).
After selecting the connection mode, click **"Next"** to upload the project currently on the Multimedia Touch Screen.

8. Update firmware

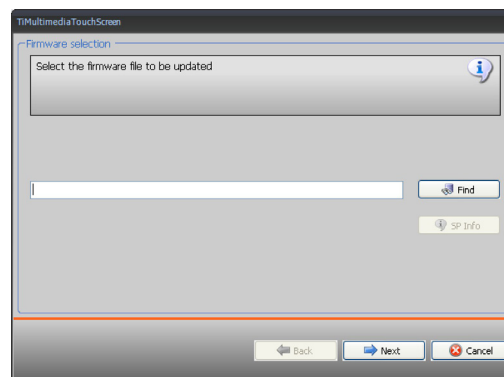
- Update firmware
"Tools" pull-down menu



- Update firmware
Control bar



A window appears, where the user can search for the folder containing the Firmware file, with **.fwz** extension (compressed file).



Select the file and click **"Open"** to continue.

A window appears, for the selection of the mode of connection to the Multimedia Touch Screen (for the connection procedures see paragraph 7.1).

BTicino SpA

Via Messina, 38
20154 Milano - Italy
www.bticino.com