

# TiSecurityBasic user manual

Software for the configuration of the 3485B  
and L/N/NT/HC/HS4601 Burglar alarm units

**bticino**



CONTENTS

1. Hardware and Software requirements	4
2. Installation	4
3. Firmware update	8
4. Upload and download configuration	12

## 1. Hardware and Software requirements



**Warning:** The TiSecurityBasic programme is the essential tool for the configuration of the 3485B and L/N/NT/H/HC/HS4601 Burglar alarm Units. The content of this program is under the exclusive rights of BTicino SpA

### Hardware requirements

- Personal Computer with Pentium processor >400 MHz
- 256 MB RAM
- SVGA graphics card with resolution 800x600
- CD-ROM drive
- Mouse

### Software requirements

- Windows 2000, XP or Vista; Internet Explorer 6.0 or higher.

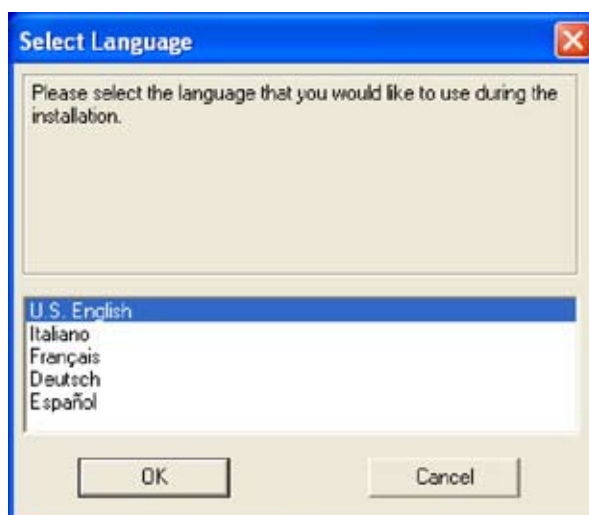
### Space used on hard-disk

- 91 Mbyte

## 2. Installation

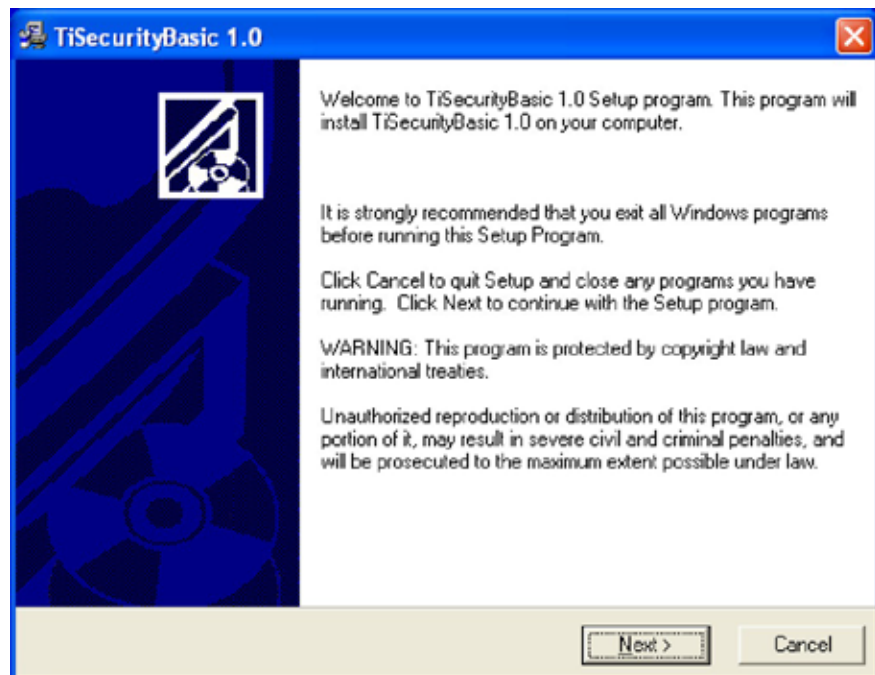
Follow this procedure to install the TiSecurityBasic programme:

1. Insert the CD-ROM in the drive;
2. After displaying the main page in web format, select "Install TiSecurityBasic";
3. The installation programme will now copy the system files necessary for the execution of the TiSecurityBasic programme.



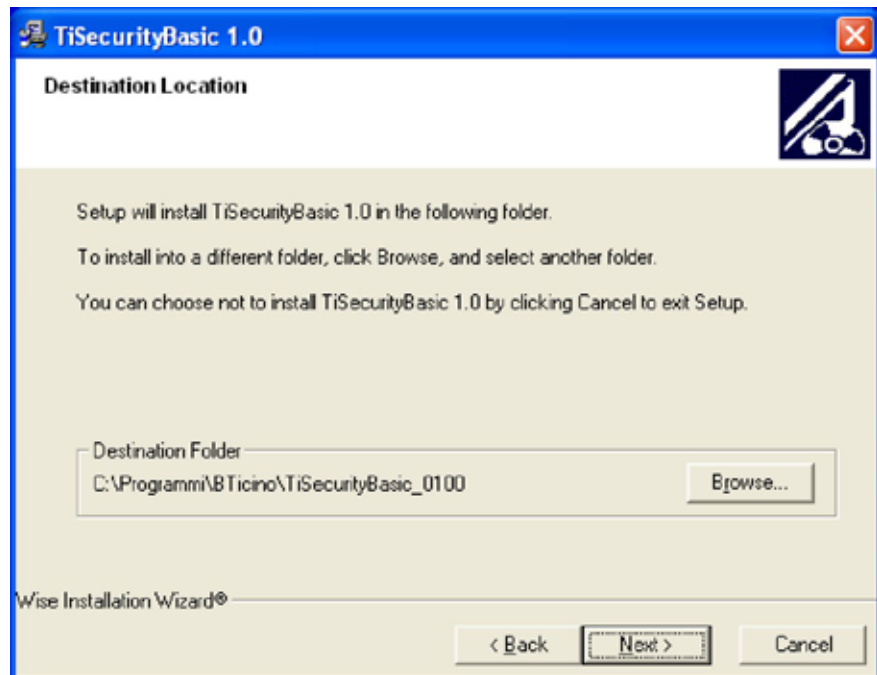
- > Select the installation kit language
- > Click the **OK** button

The following screen will appear



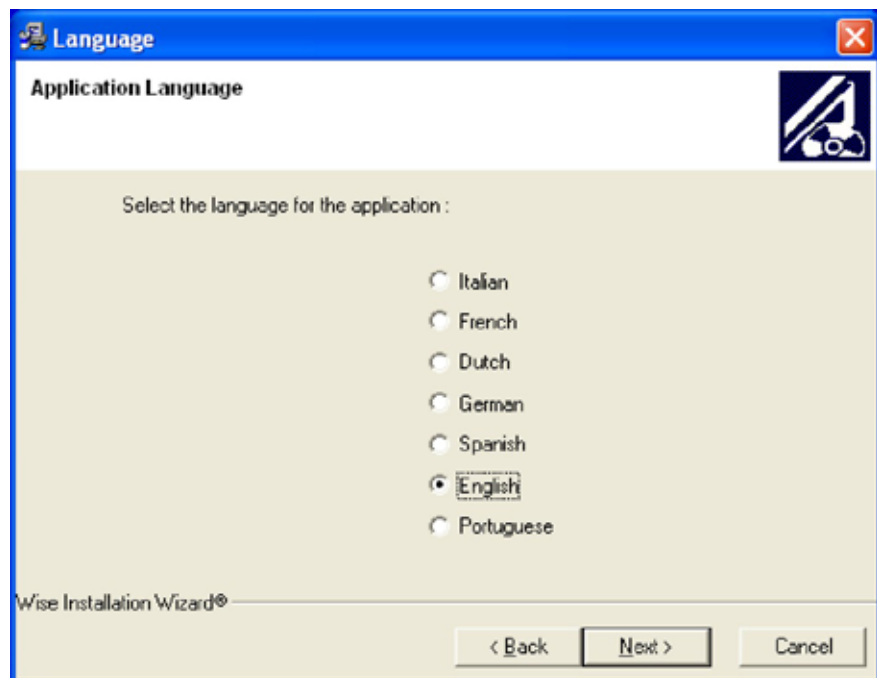
- > Click the **Next** button

The following screen will appear



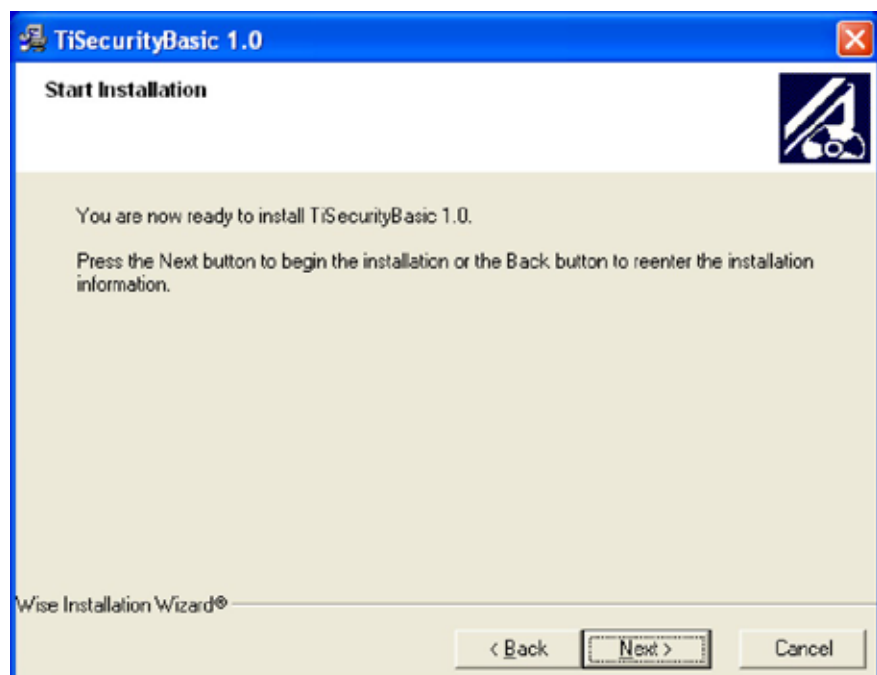
- > Click **Next** to install the program in the default directory  
"c:\Programmi\BTicino\TisecurityBasic\_0100"
- or
- > Click **Browse** to select the required path

The following screen will appear



- > Select the TiSecurityBasic interface language (When the application is running normally it will be possible to change the language without re-installing)
- > Click **Next**

The following screen will appear



- > Click **Next** if you are ready to install TiSecurityBasic
- or
- > Click **Back** to return to the previous screen

The installation of the program will now begin



Depending on the operating system settings in use, it may be necessary to restart the system



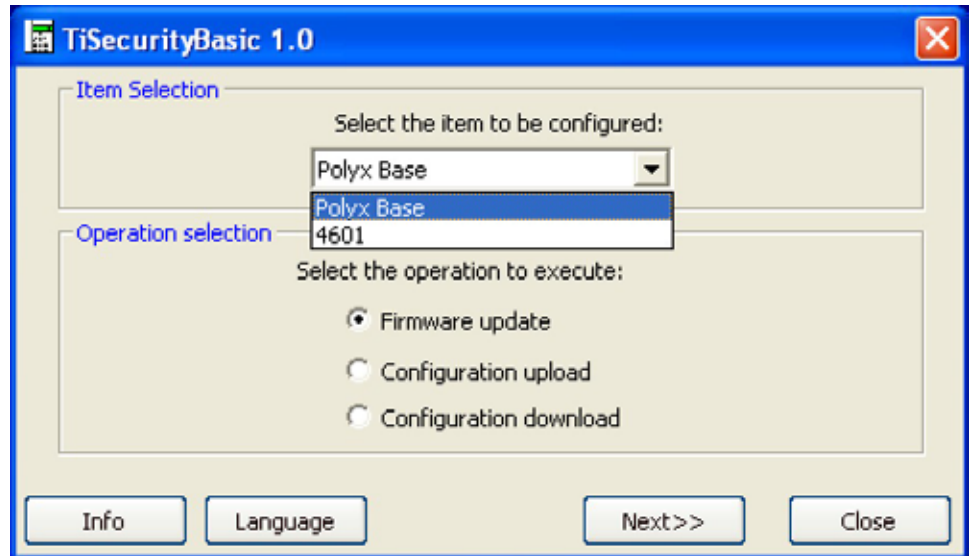
> Click **Finish** to end the process

## 3. Firmware update

With the TiSecurityBasic software, it is possible to update the permanent software of the Unit with new revision procedures distributed by BTicino. This function enables you to implement possible improvements and new functionalities in existing installations without replacing the hardware.

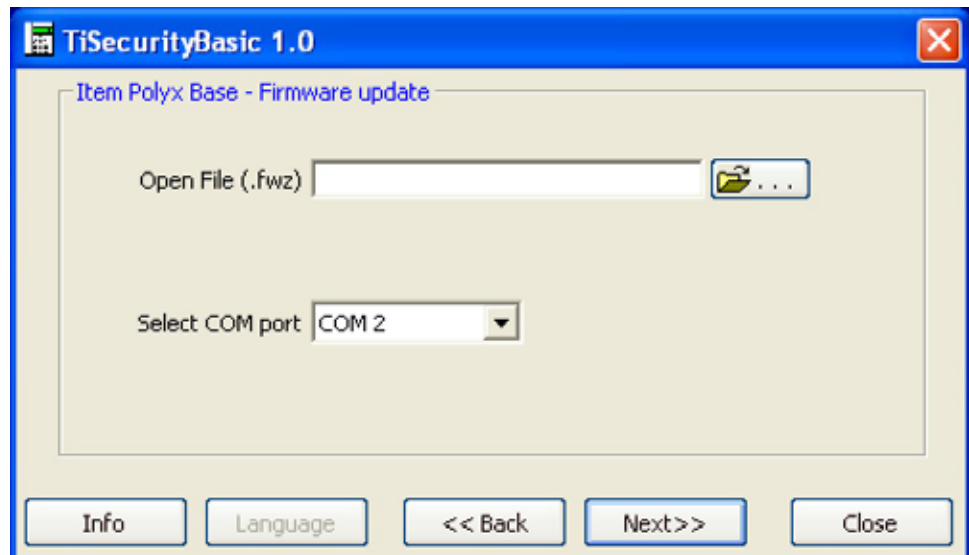


**Warning:** for proper functioning of the software, the 3485B and L/N/NT/H/HC/HS4601 Burglar Alarm units must be installed according to the instructions specified in the Installation Manuals supplied with the device.



- > Select the type of Unit to be updated, Select **Firmware Update** and click **Next**

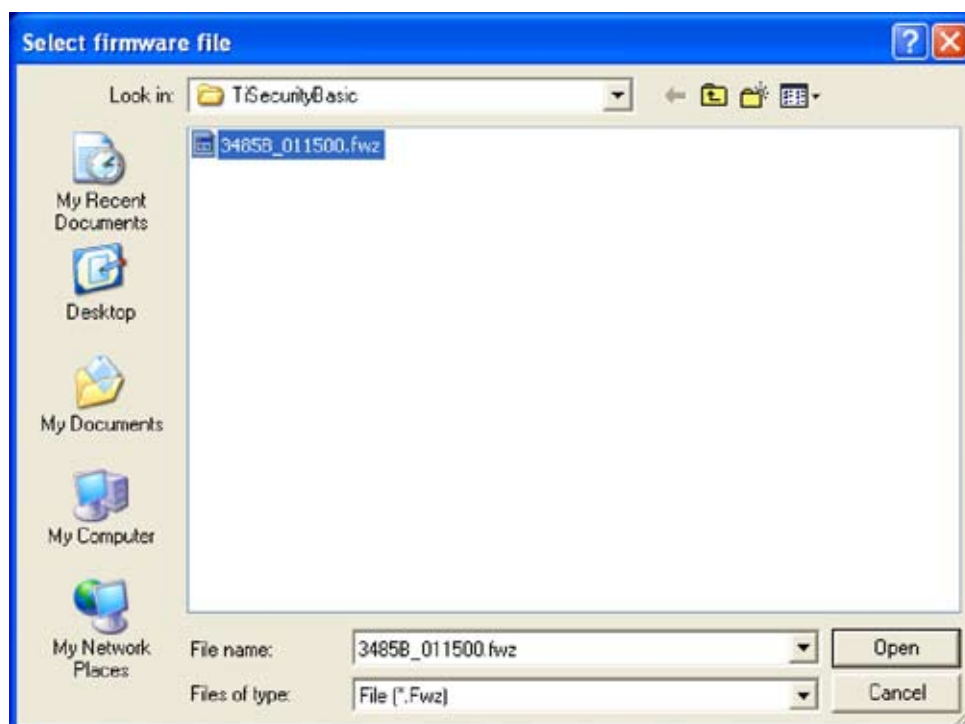
The following screen will appear



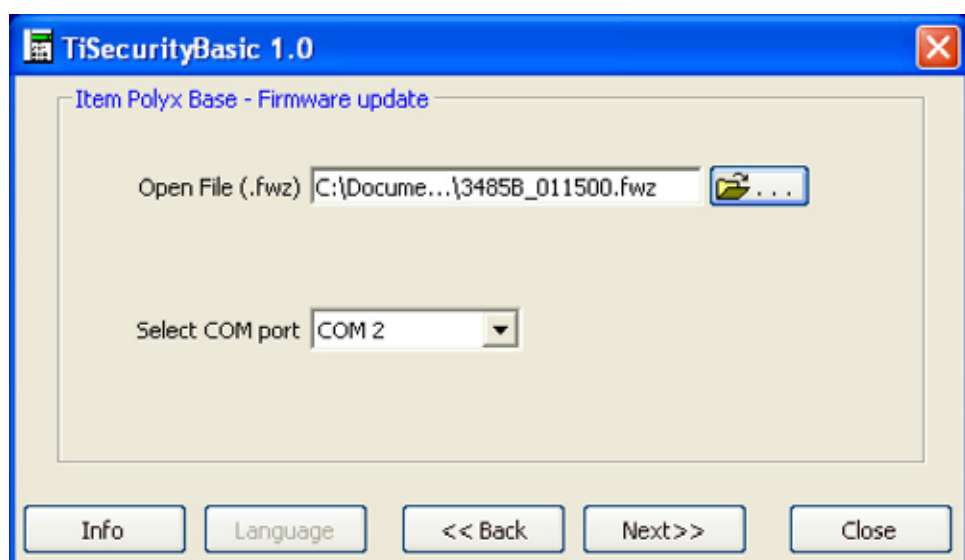
- > Select the COM port of the PC to which the Unit will be connected



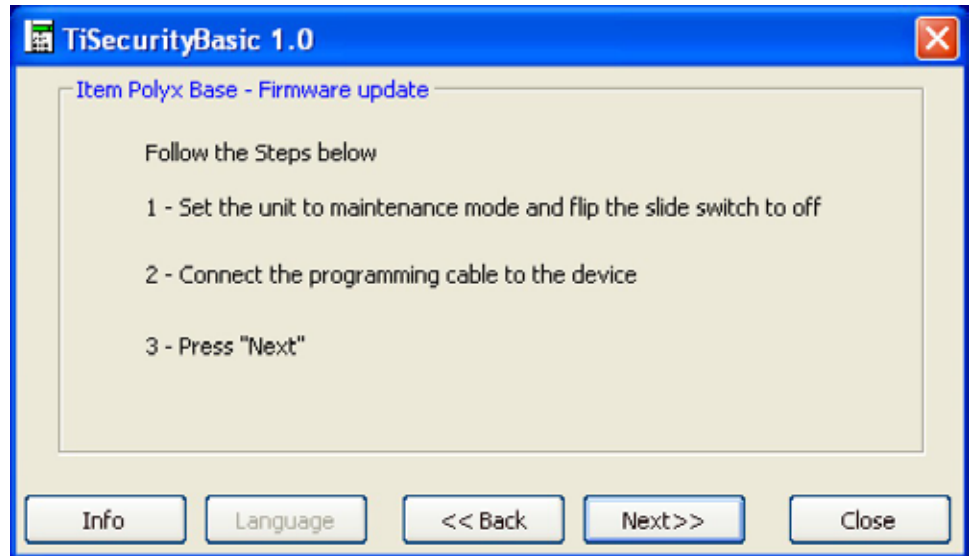
- > Click **Open file (.fwz)**



- > Select the file containing the updated firmware version (.fwz)
- > Click the **Open** button

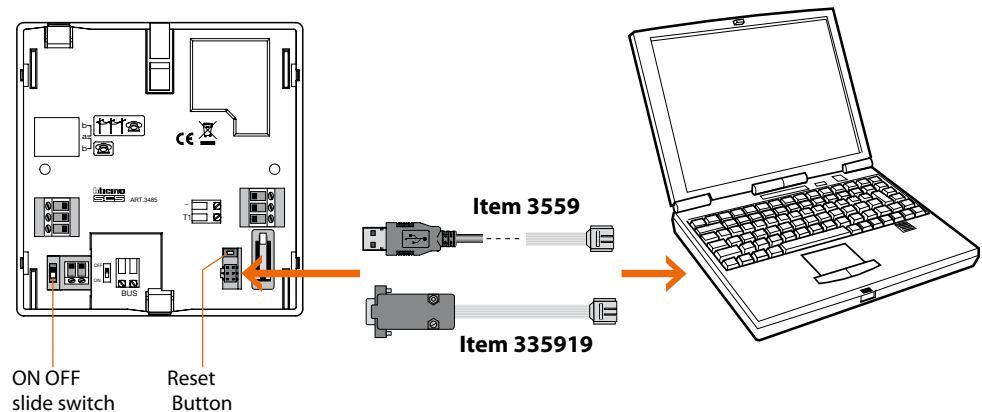


- > Click **Next** to continue

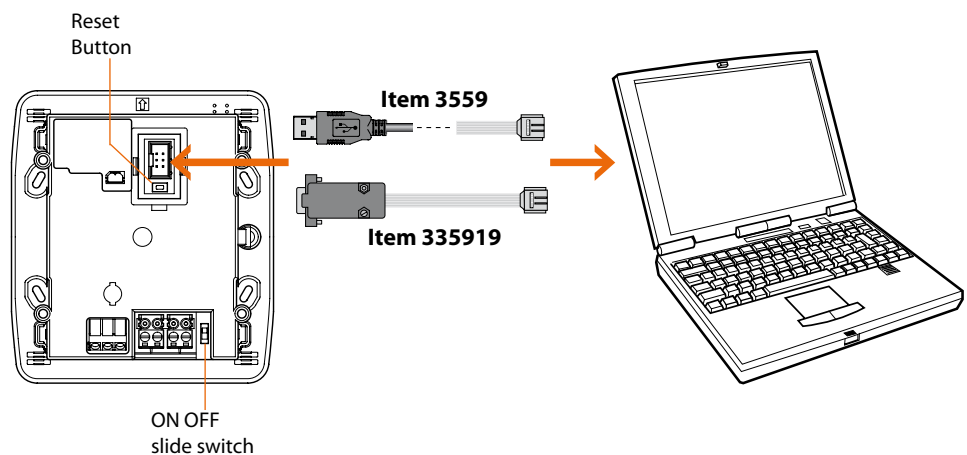


- > Access the Unit **Maintenance** menu and **flip the slide switch to OFF**
- > Connect the programming cable to the COM port of the PC and to the 6-way connector of the Unit

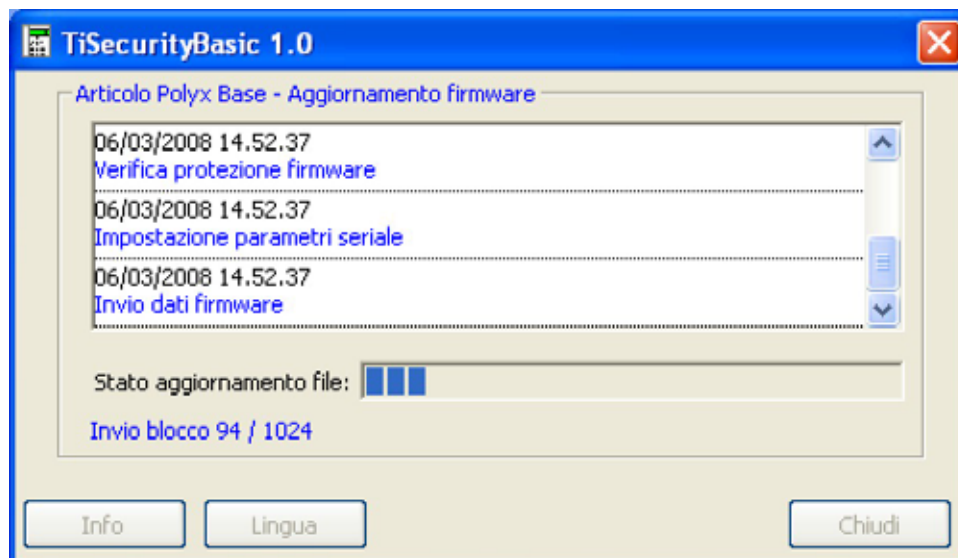
## Connection to the Unit item 3485B



## Connection to the Unit item L/N/NT/HC/HS4601

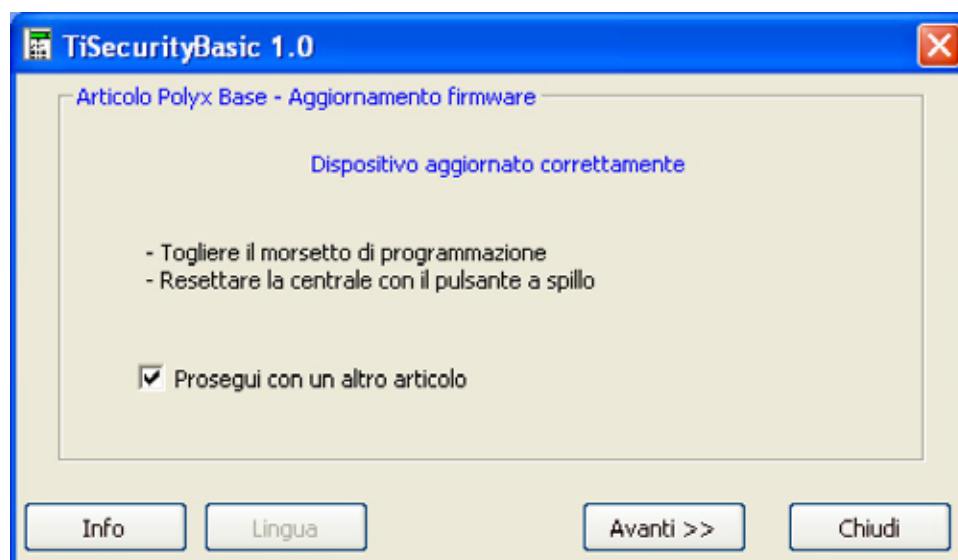


- > Click Next; the firmware update procedure will start



Afterwards, the following screen will appear

- > Disconnect the programming cable from the Unit
- > Flip the slide switch back to **ON**
- > Press button to reset the Unit

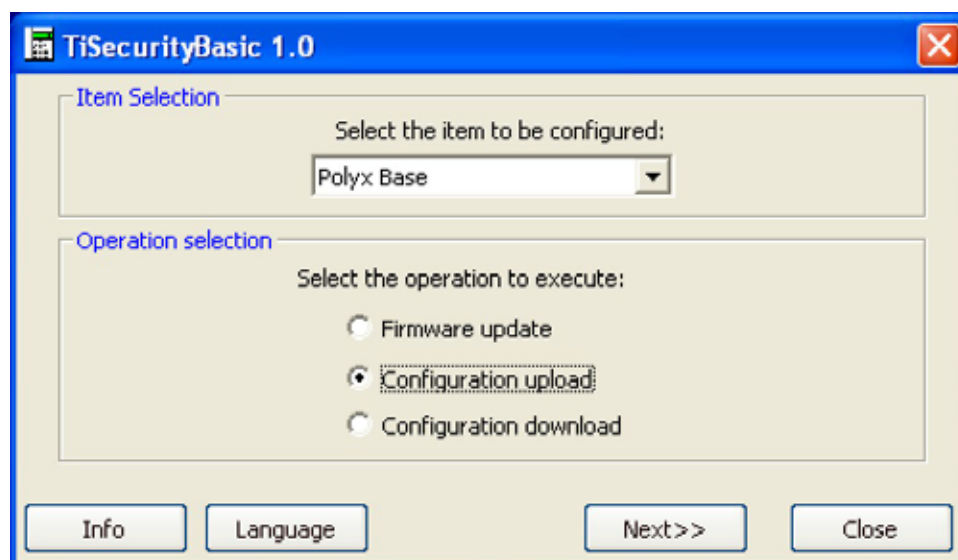


- > If you want to update other Units using the same firmware, tick the box **Continue with another item**; If you click **Next**, the above-mentioned procedure will be given again
- or
- > Click **Next** to go back to the first screen

## 4. Upload and download configuration

The **Upload** function allows you to acquire the configuration on the Unit and save it in a file so it can be used to retrieve the configuration of the Unit or to configure other Units with the **Download** function.

The procedures to execute these functions are basically the same; for the sake of brevity, here is an example.

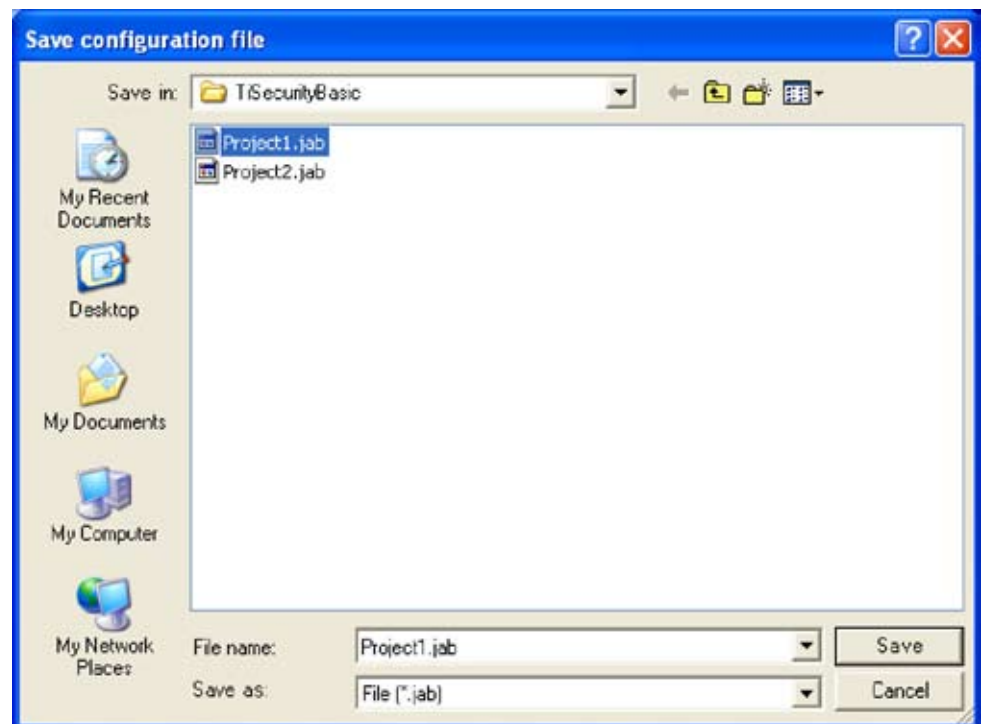


- > Select the procedure
- > Click **Next**

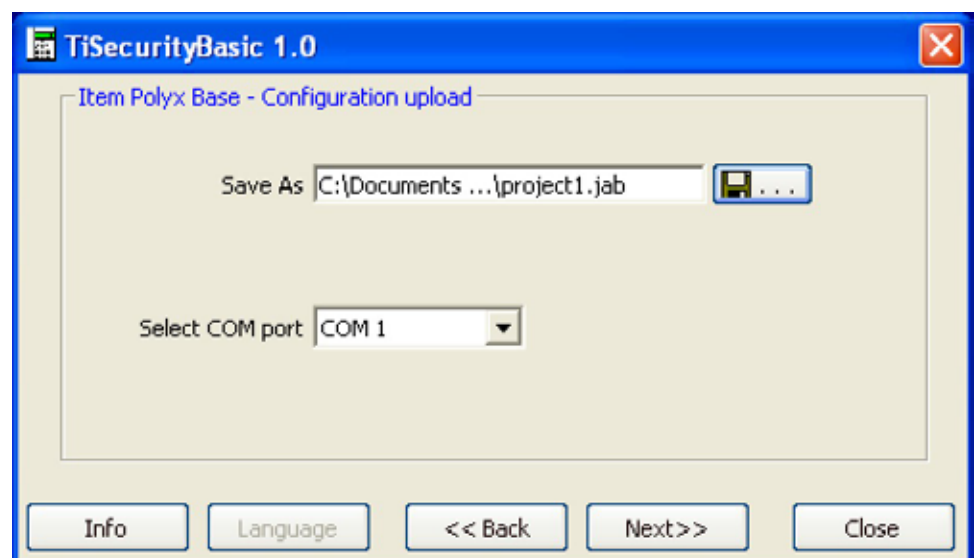


- > Select the COM port of the PC to which the Unit will be connected

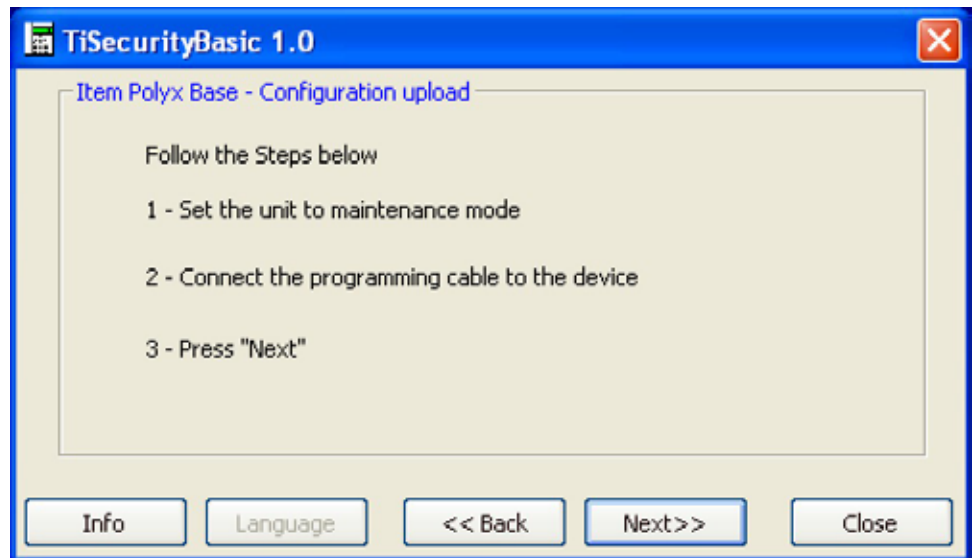
- > Click on **Save As** (Open file for Download)



- > Select the path and enter the name you want to give to the configuration file (for the Download function, select the configuration file to be transferred to the Unit)
- > Click **Save** (Open for Download)



- > Click **Next** to continue



- > Access the **Maintenance** menu of the Unit
- > Connect the programming cable to the COM port of the PC and to the 6-way connector of the Unit
- > Click **Next**; the selected procedure will start

Afterwards, the following screen will appear



- > Disconnect the programming cable from the Unit
- > Click **Next** to go back to the first screen





BTicino SpA  
Via Messina, 38  
20154 Milano - Italy  
[www.bticino.it](http://www.bticino.it)