

Index


1. Hardware and Software requirements	4
2. Update the Software	4
3. Fundamental concepts	4
3.1 Function selection menus and pushbuttons	5
3.2 Connecting the device to a PC	6
3.3 Send the configuration	7
3.4 Receive the configuration	9
3.5 Update the Firmware	10
3.6 Request device info	10
4. Project configuration	11
4.1 Parameters	11
4.2 Main screen	12
4.3 Common configurations	15
4.4 Automation	17
4.5 Lighting	18
4.6 Burglar alarm	21
4.7 Temperature control	21
4.8 Video door entry system	35
4.9 Sound system	37
4.10 Scenarios	42
4.11 Advanced and scheduled scenarios	44
4.12 Energy management	48
4.13 Settings	55
4.14 Tariff setting	61
4.15 Parameters	62
5. UPnP and Firewall services settings	63
5.1 How to activate Windows Services for UPnP:	63
5.2 How to enable firewall exceptions for TiTouchScreen	65

1. Hardware and Software requirements

System requirement*

- PC with Pentium > 2 GHz
- CD-ROM unit
- Video resolution 800 x 600, 256 colours
- Windows XP SP2 (32 bit), Windows Vista (32 bit o 64 bit) or Windows 7 (32 bit o 64 bit)
- 512 MB RAM memory (XP), 1 GB RAM memory (Windows Vista, Windows 7)
- Hard disk: 500 MB minimum free space available
- Framework .NET 3.5 SP1 of Microsoft™
- Minimum browser requirements for correct display of the web pages: Internet Explorer ver. 7, Firefox ver. 3, Chrome ver. 9, Safari ver. 4.
However, for the energy supervision function higher Internet Explorer requirements are necessary: ver.8 + Google Frame plug-in or better.

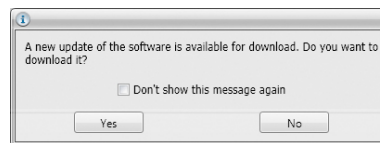
*The updated requirements can be found on the www.bticino.com website.

 *Warning: The TiTouchScreen software is the fundamental tool for the configuration of Touch Screen.
This software is protected by exclusive rights, owned by the company BTicino SpA*

2. Update the Software

Once installed, the TiTouchScreen software will automatically search for any updated versions on line.

If any are found, the user will be asked to enter a path for saving the new updated version executable file:



It will however still be possible to work using the current version and install the update at a later date.

3. Fundamental concepts

The TiTouchScreen software gives the possibility of configuring Touch Screen (using a simple and intuitive procedure, with the creation of a customised project based on personal needs and the actual system installed). The software also performs a check on the configuration, notifying any configuration errors.


To create a new project

- Run TiTouchScreen.
- Make a new project.
- Send the data to the device.

To edit an existing project

- Receive the current configuration data from the Touch Screen.
- Make any modifications.
- Send the data of the project created to Touch Screen.

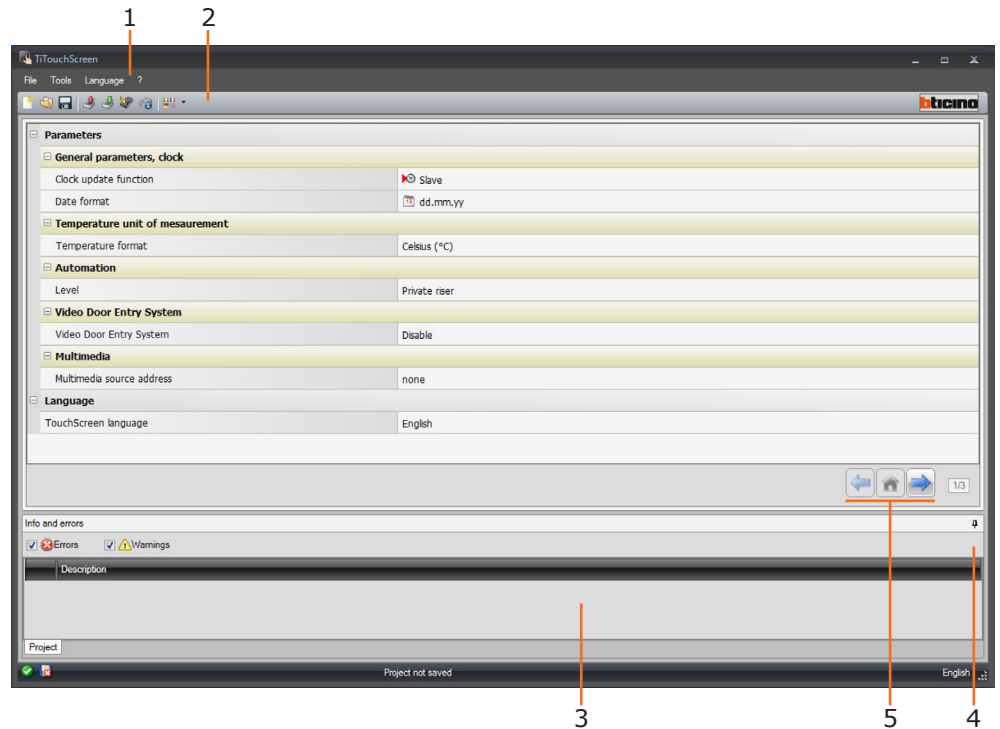
With TiTouchScreen you can update the device firmware version ("Update the Firmware") with new revisions issued by BTicino.

 *Warning: for the TiTouchScreen software to work correctly, the devices must be installed in agreement with the indications given instruction sheets supplied with the devices.*

 *Warning Inside the manual click the  symbol to jump to the corresponding chapter.*

3.1 Function selection menus and pushbuttons

On opening the program, the start screen is displayed:



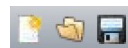
1. Pull-down menu
2. Pushbutton menu
3. Info and Errors area
4. Opens the Info and Errors area
5. Pulsanti di navigazione



- A. Previous page
- B. Start page
- C. Next page

All the functions that can be performed with TiTouchScreen can be selected by clicking the icons on the toolbar, or by selecting the appropriate items from the Pull-down menus.

The toolbar includes the following functions:



Creating, Opening and Saving the configuration file



Receiving, and forwarding the configuration to the connected device



Update the device Firmware



Request device info



Application language selection



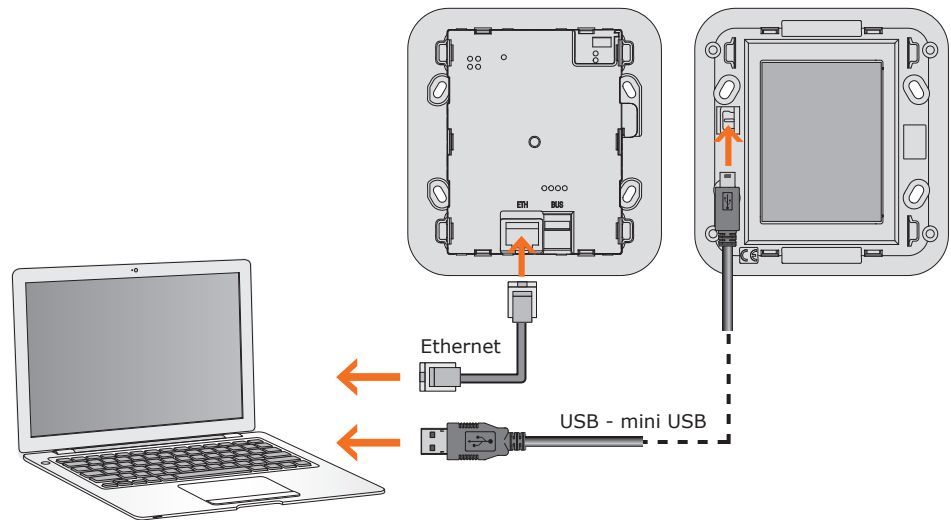
Connection to the www.bticino.com website

3.2 Connecting the device to a PC

To **Send** or **Receive the configuration**, **Update the Firmware** and **Request device Info**, first of all the device must be connected to a PC, making sure that the correct port has been selected.

The operation should be performed as indicated below:

Use a USB cable, connecting it between the device's miniUSB connector and the PC's USB port.



The device must be connected to the BUS for the communication to take place.

The creation and saving of a project file can be performed without connecting the PC to the device.

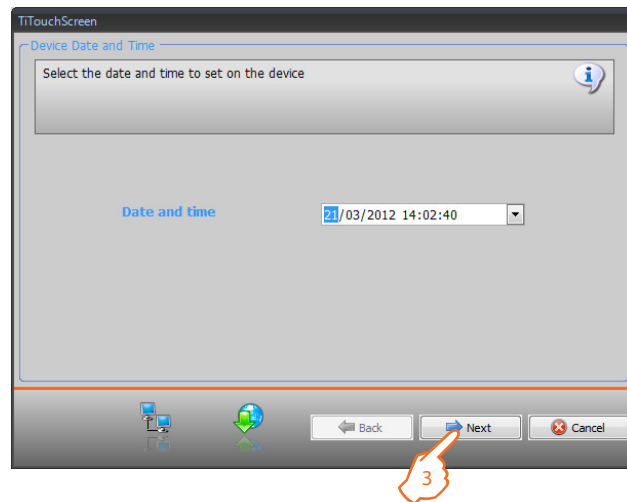
3.3 Send the configuration

It allows the user to send the project created to the device.

Procedure:

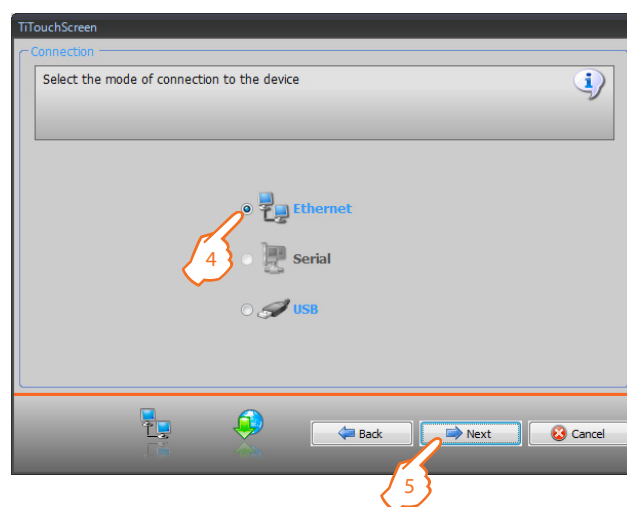
1. Connect the device to a PC as shown in the corresponding section.
2. From the Tools pull-down menu select Send Configuration.

The following window appears:



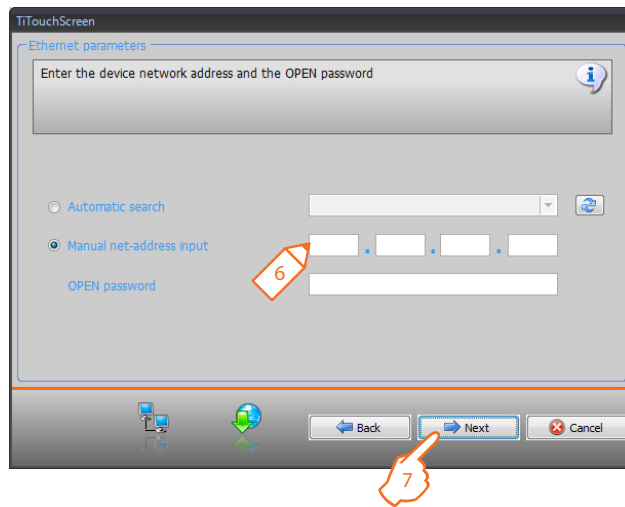
3. Click Next to display the window for the selection of the mode of connection with the device. The sending operation can be performed using two different types of connection:

- **Ethernet:** by entering the network address, or by automatic search;
- **USB:** through automatic detection of the connected items.



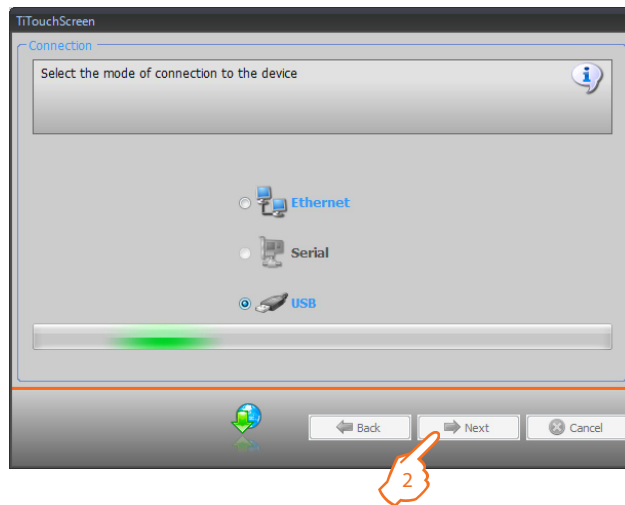
4. Select the mode
5. Click **Next**

ETHERNET CONNECTION



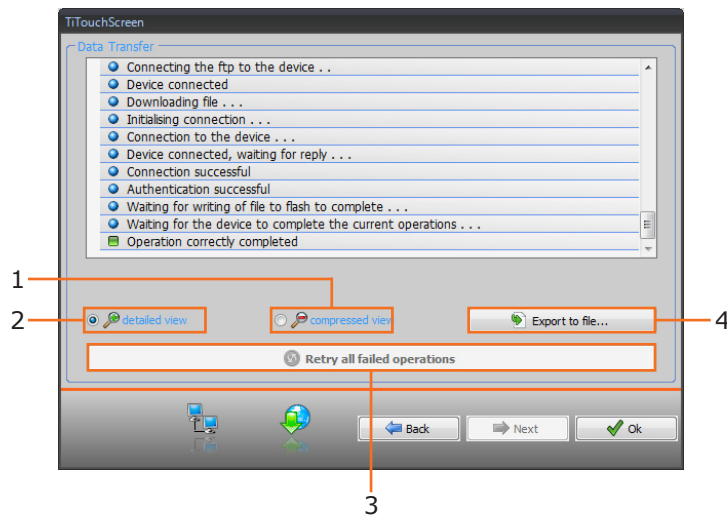
6. Enter the network address and the OPEN password
7. Click **Next**

USB CONNECTION



1. Wait for the device to be recognised automatically
2. Click **Next**

The project is transferred to the device.



1. Hide the details of the current configuration forwarding operation
2. Display the details of the current configuration forwarding operation
3. Repeat the operation if unsuccessful
4. Export the log file

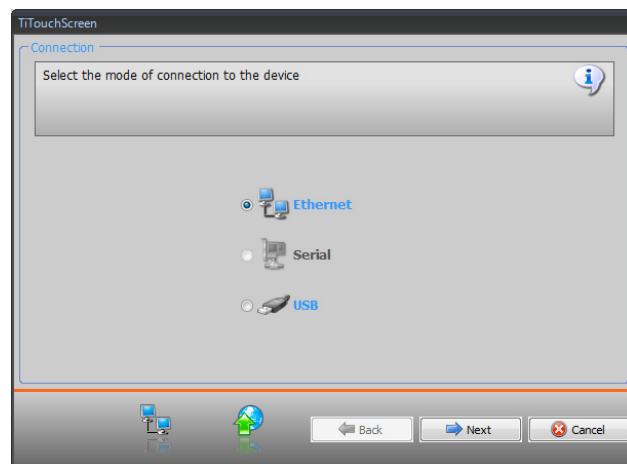
3.4 Receive the configuration

It allows the user to receive the configuration from the device; once the configuration has been acquired, this can be changed and saved, or it can be resent to the device.

Procedure:

- Connect the device to a PC as shown in the corresponding section.
- From the **Tools** pull-down menu select **Receive the configuration**.

A mask is displayed, for the selection of the mode of connection to the device (for the connection procedures see the **Send the Configuration** section).



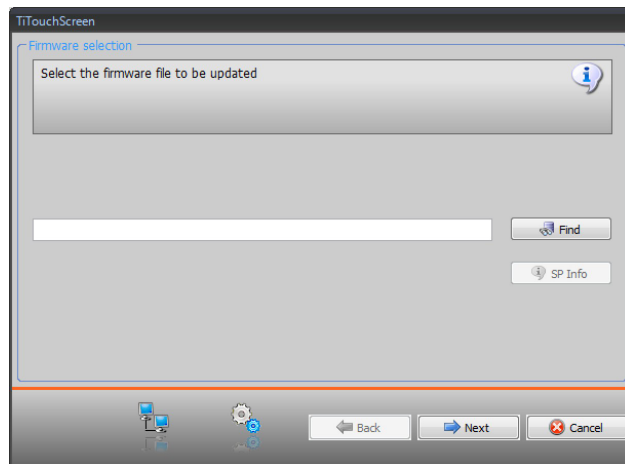
3.5 Update the Firmware

It allows the user to update the device firmware.

Procedure:

- Connect the device to a PC as shown in the corresponding section.
- From the **Tools** pull-down menu select **Update the Firmware**.

The following screen appears, prompting the user to search for the folder containing the firmware file with extension **.fwz** (compressed file).



- Select the file and click **Open** to continue.

A mask is displayed, for the selection of the mode of connection to the device (for the connection procedures see the **Send the Configuration** section).

3.6 Request device info

It displays some information on the device connected to the PC.

Procedure:

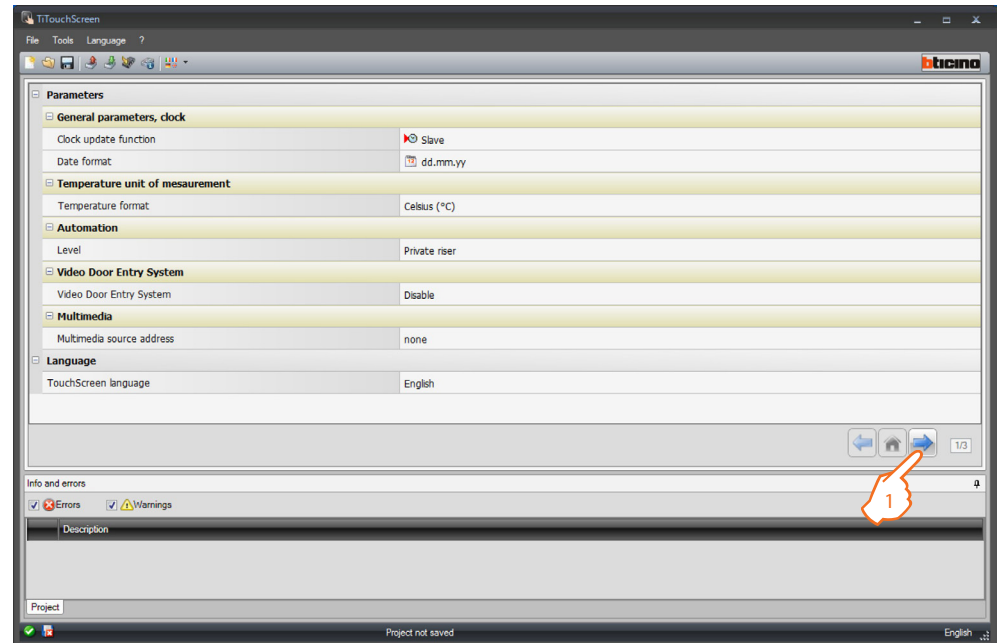
- Connect the device to a PC as shown in the corresponding section.
- From the **Tools** pull-down menu select **Request device info**.

A mask is displayed, for the selection of the mode of connection to the device (for the connection procedures see the **Send the Configuration** section). After selecting the connection mode, Click **Next** to display a screen showing the device hardware and software features.

4. Project configuration

4.1 Parameters

To configure a new project , first of all it is necessary to set the parameters of the following screen:



- **General parameters, clock**

Clock update function: choose if Touch Screen must be set as system Master Clock.

Date format: select the date format (e.g. dd.mm.yy. / mm.dd.yy. / yy.mm.dd.).

- **Temperature unit of measurement**

Temperature format: choose if Celsius (°F) or Fahrenheit (°F) degrees should be displayed.

- **Automation**

Level: if the device has been wired on the SCS BUS, select the level it belongs to (private riser/local BUS).

- **Video door entry system**

Video door entry system: select enable if the device is wired on the video door entry system BUS, select disable if it is connected on the automation BUS.


Handset address: if "Enable" has been selected during the configuration, enter the address of the handset associated to Touch Screen.

- **Multimedia**

Multimedia source address: enter Touch Screen address as sound system source (if the 3456 adaptor is present).

- **Language**

Touch Screen language: select the language that will be displayed on Touch Screen.

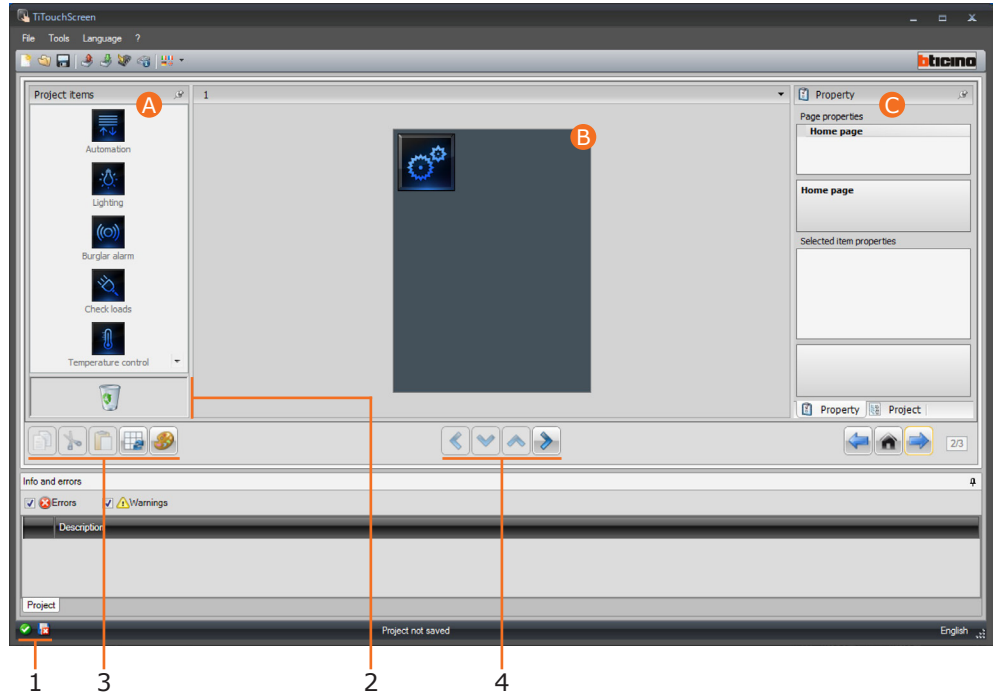
1. After configuring the parameters click the  pushbutton to enter the functions that will be performed by Touch Screen.

4.2 Main screen

The page is divided into three sections: On the left section (A) is the “**Project Items**” area.

The centre section (B), is the “**Display**” area. It is used to configure what will then be displayed as the Home Page of the device, and its subpages.

The right section (C) shows the “**Property/Project**” area, where the configuration fields for the object selected in the Display area are available.



- 1. File saving Display
- 2. Delete an object
- 3. Navigation bar



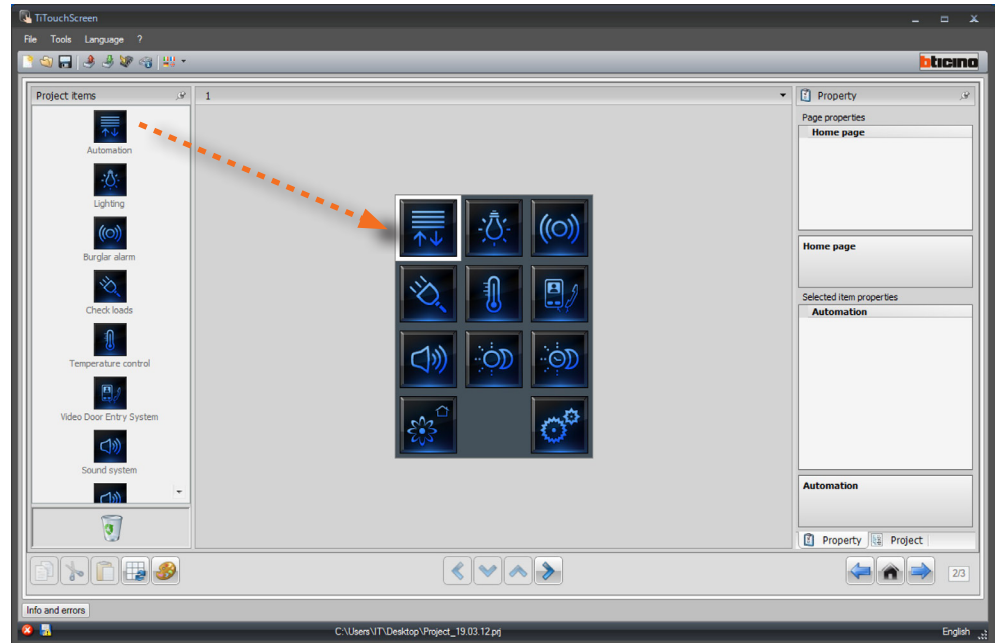
- 1. Copy an object
- 2. Cut an object
- 3. Paste an object
- 4. Align the grid
- 5. Select skin

- 4. Navigate through the pages



Project items

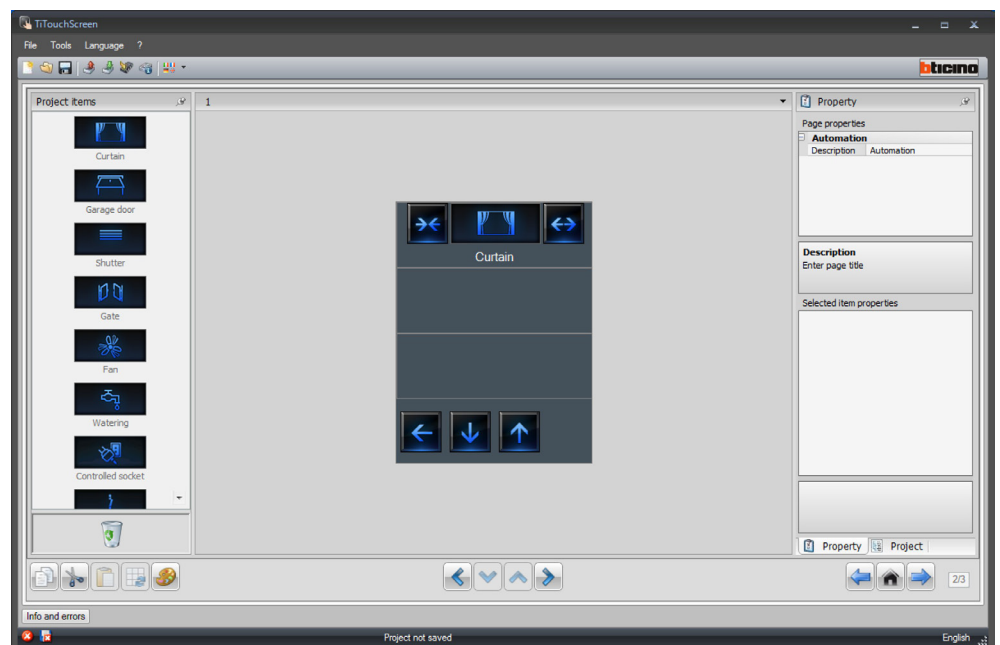
This area shows all the objects that can be used to build the pages. To do that simply drag the objects from the **"Project Items"** area to the **"Display"** area, or double click the desired object.



Warning: The "Energy Data", "Supervision System", and the "Load Management" functions may be inserted individually in the project. Alternatively, select the "Energy Management" function, which groups together the three above mentioned functions (see the corresponding chapter).

Sub-pages

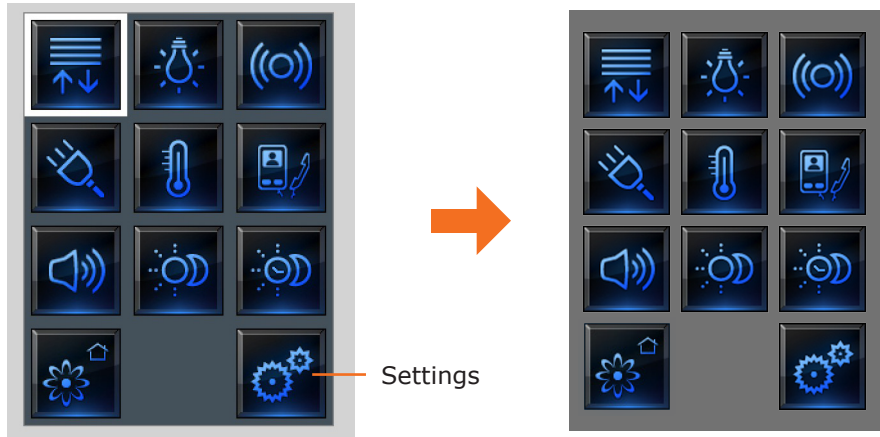
Some objects are used for connection to other pages, where correlated objects are grouped together (e.g. Scenarios). The configuration of the sub-pages is performed following the order the objects have been included in the Home Page.



Display

The “**Display**” area shows the future setup of the Home Page and the sub-pages of the device.

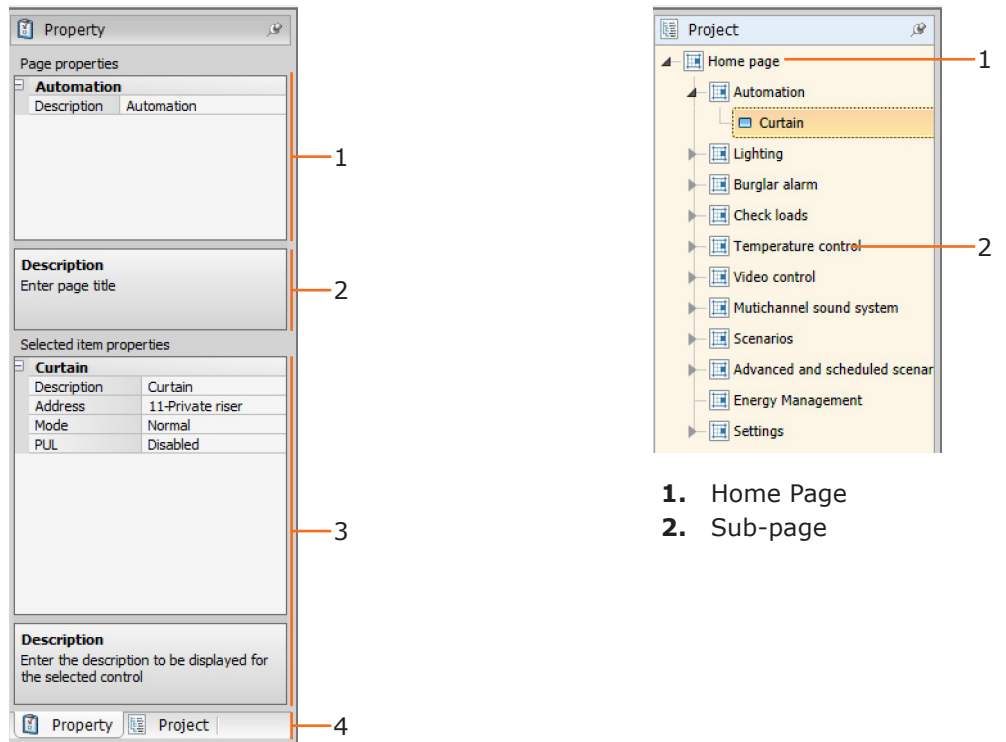
This page consists of customisable objects. The “**Settings**” icon is the only one that cannot not be removed.



Property/Project

This area is split into two sections, which can be selected by clicking the labels in the bottom part. the “**Property**” section shows the configuration fields for the object currently selected in the Display area.

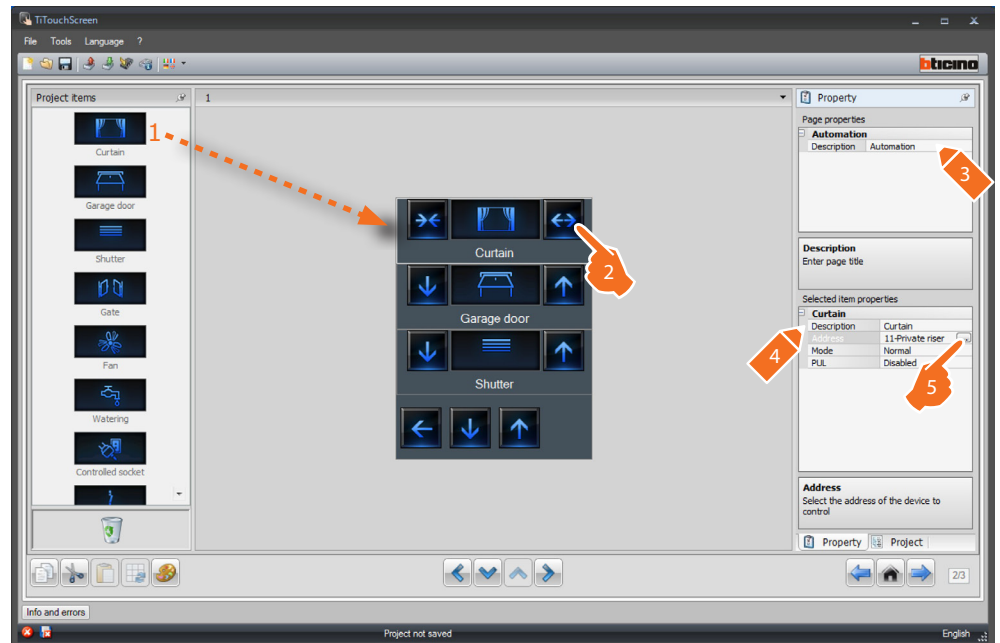
The “**Project**” section displays the objects by page in a tree menu format. In addition to selecting the objects, the user can also navigate through the project, selecting any available sub-pages.



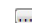
1. Page Parameters
2. Indications for the configuration of the selected parameters
3. Selected item properties
4. Property/Project selection label

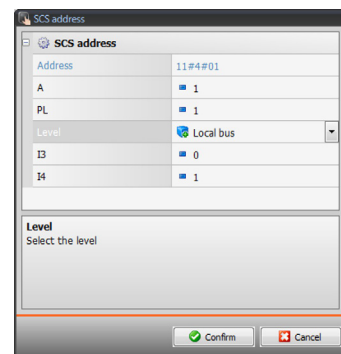
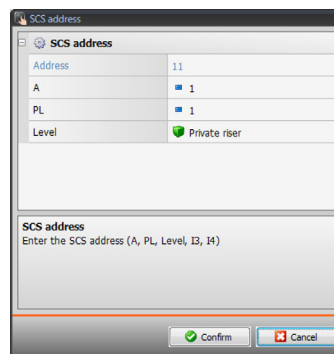
4.3 Common configurations

This section shows the procedures present in most of the configuration screens. These procedures are highlighted by the orange colour of the symbols (arrows, hands, pencils).

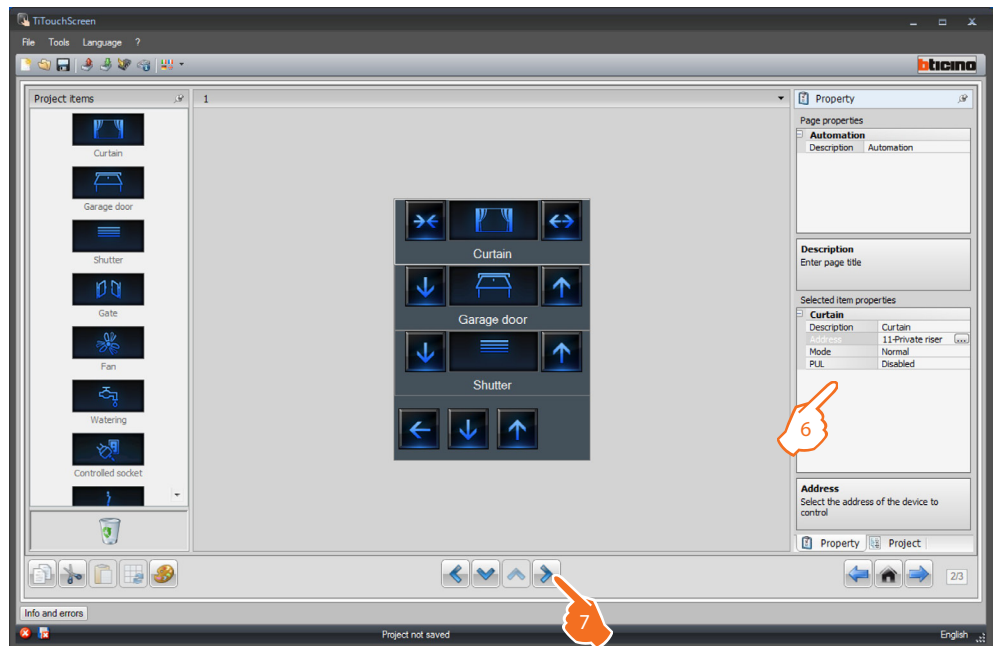



Description of the common procedures

1. Double click or drag the function/application from the **"Project Items"** area to the **"Display"** area.
2. Select a function from the **"Display"** area.
3. Customise the page description in the **"Page Properties"** area.
4. Customise the description of the selected function in the **"Selected Item Properties"**.
5. Click  to configure the address.



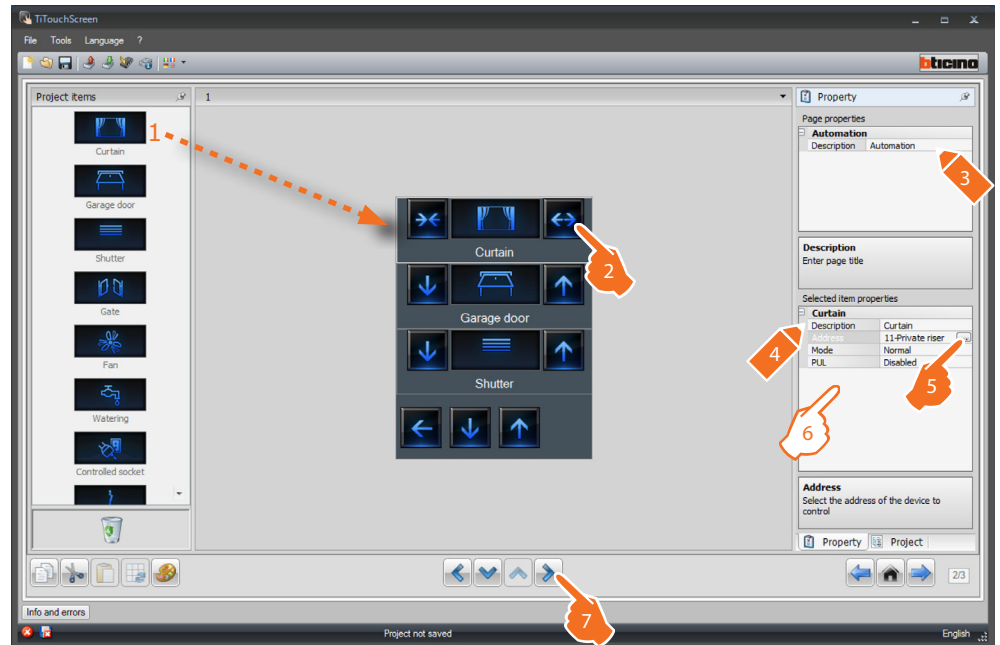
- **A = Room:** select the value of the configurator of the **A** room (0 - 10, GEN, AMB, GR).
- **PL = Light point:** select the value of the configurator of the **PL** light point (the number depends on the function).
- **Level:** select the level it belongs to (Private riser = level 3 or Local Bus = level 4).
If Level = Local Bus is selected, the interface field appears.
In this case select the logic expansion interface address where the object to control is located.



6. The other parameters can be found in the **"Selected Item Properties"** area. They differ depending on the selected object and will be explained in the following sections.
7. Once the page configuration/customisation operation has been completed click the  pushbutton to go to the next page.

4.4 Automation

This application gives the user the possibility of managing in a simple way all the automatism of the home automation system, like rolling shutters, shutters, motorised curtains, controlled sockets, watering system, etc.



6. Mode: For some types of automatisms (Curtain, garage door, shutter and gate) the command operating mode configuration is required:

– **Safe mode**

Opening or closing is performed only while the corresponding key is pressed.

– **Normal mode**

To start the opening or closing movement, touch the corresponding key.

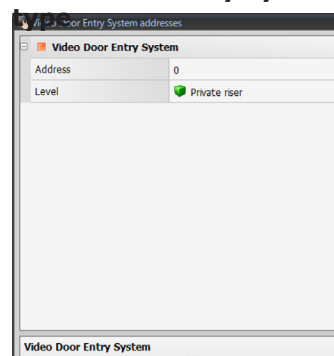
During the movement the icon changes showing the Stop pushbutton, to indicate that the function is active.

To stop the movement click Stop. When you release the key the movement will stop.

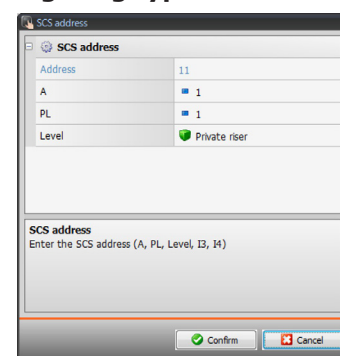
PUL: some types of automatism require the enabling/disabling of PUL; select enabled if the actuator being configured is physically or virtually configured as PUL.

For the Door lock command select the video door entry system address, or the address of the entrance panel associated to the system (if the device is wired on the video door entry system BUS); if the device is wired on the automation BUS, for the Door lock command the values A and PL must be entered.

Video door entry system

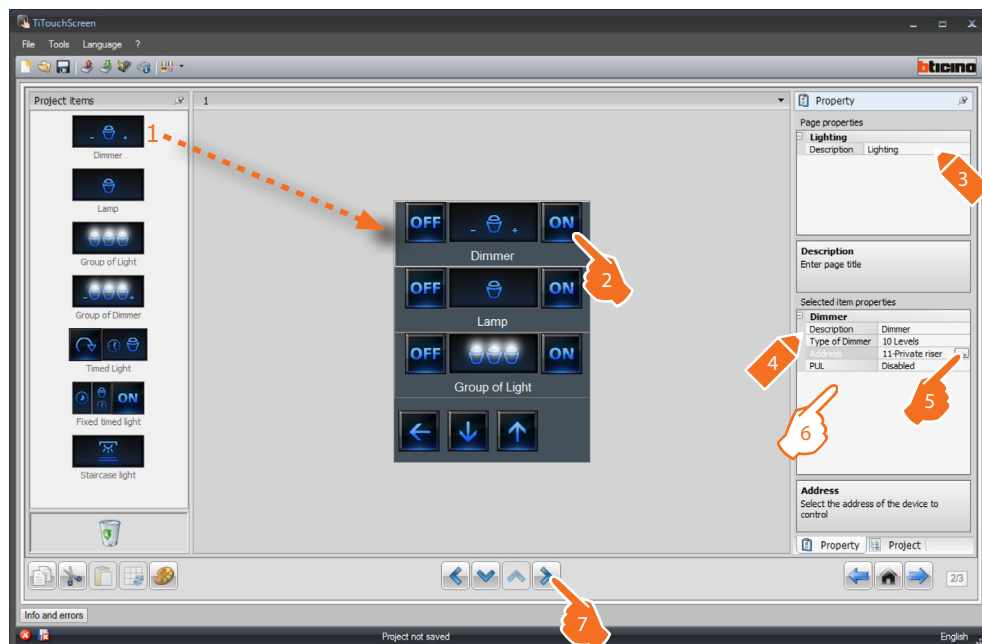


Lighting type



4.5 Lighting

This application gives the user the possibility of switching ON or OFF a certain light, or group of lights, and manage timed ON/OFF light controls.



6. Dimmer, Lamp configuration

Selected item properties	
Dimmer	
Description	Dimmer
Type of Dimmer	10 Levels
Address	10 Levels
	100 Levels

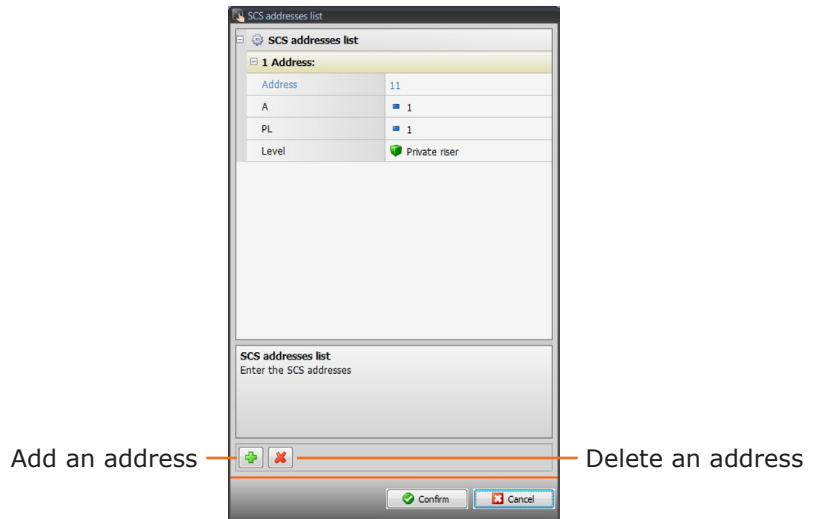
Type of Dimmer: select the type of dimmer (10 levels/100 levels).

Selected item properties	
Dimmer	
Description	Dimmer
Type of Dimmer	10 Levels
Address	11-Private riser
PUL	Disabled
	Disabled
	Enabled

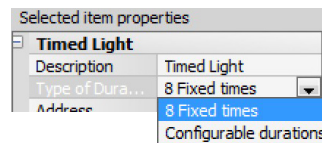
PUL: PUL enabling/disabling is required; select enabled if the actuator being configured is physically or virtually configured as PUL.

Configuration of a **Group of lights**, or a **Group of dimmers**

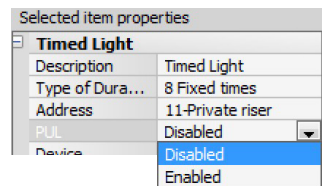
This function can be used to control several light points at the same time, setting either point-by-point controls, or controls for whole light groups and rooms, or by setting a general control.



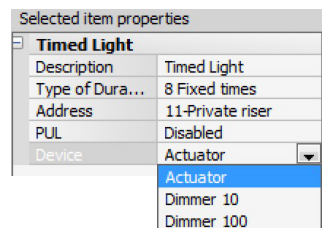
Configuration of **Timed Light**



Type of Duration: it is possible to select among 8 preconfigured fixed times or enter 7 customised durations for the user to choose.



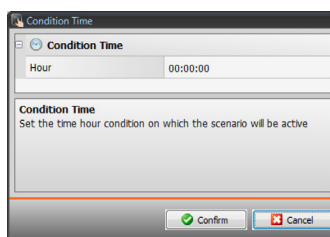
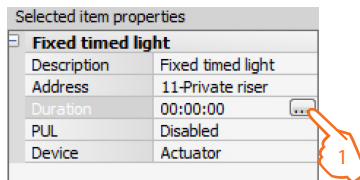
PUL: PUL enabling/disabling is required; select enabled if the actuator being configured is physically or virtually configured as PUL.



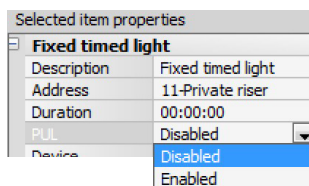
Device: select the type of device (actuator/Dimmer).

Configuration of Fixed timed light:

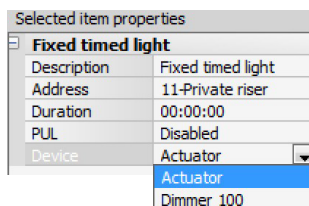
This function enables configuring a light to be controlled with a fixed switch-on interval.



- 1. Time:** click to set the duration of the switch-on time interval (Hour, Minutes, Seconds).



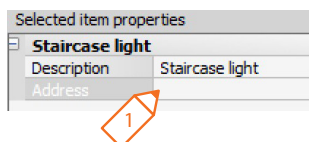
PUL: PUL enabling/disabling is required; select enabled if the actuator being configured is physically or virtually configured as PUL.



Device: select the type of device(actuator/Dimmer).

Configuration of Staircase light:

If the "staircase light" actuator is installed in the system, including it in the Ti-TouchScreen will give the possibility of controlling it from the device, choosing a customised description.

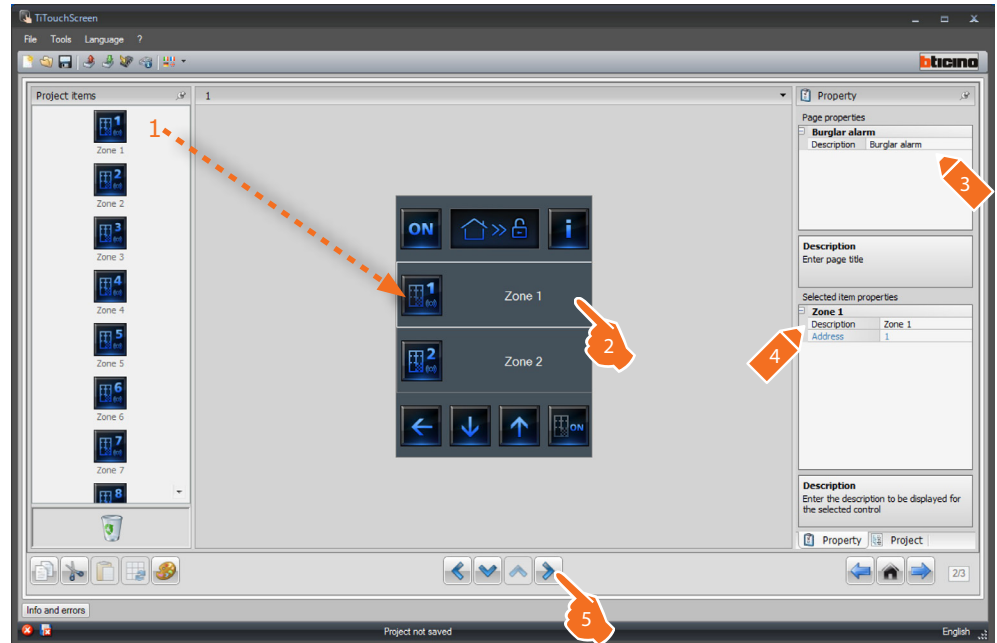


- 1. Address:** enter the staircase light actuator address to control.

4.6 Burglar alarm

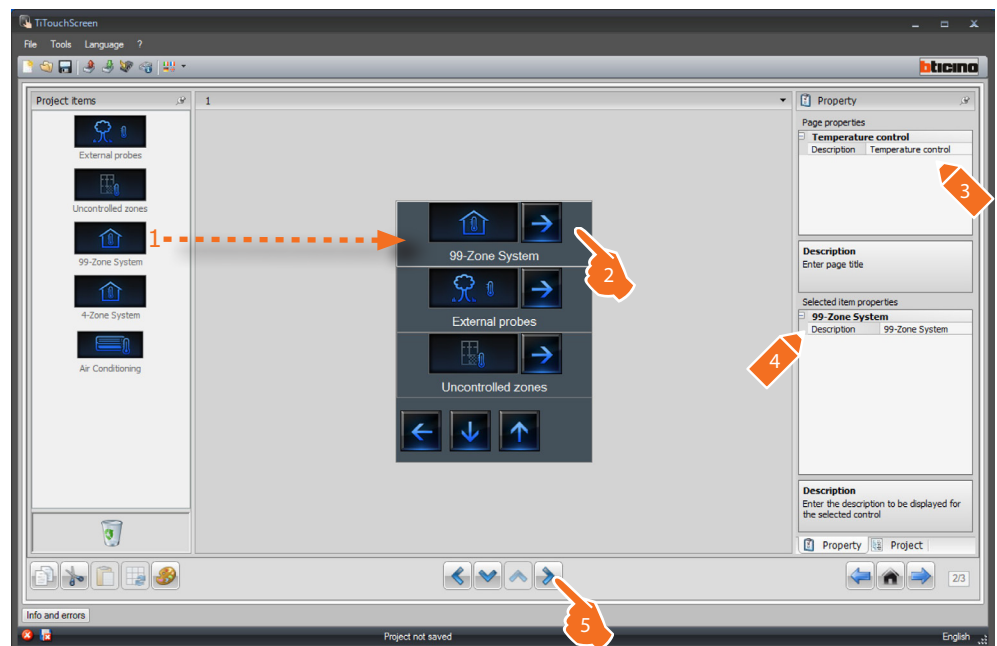
This application gives the user the possibility of controlling and managing the status of the burglar alarm system.

Enter the number of zones corresponding to the actual configuration of the system.

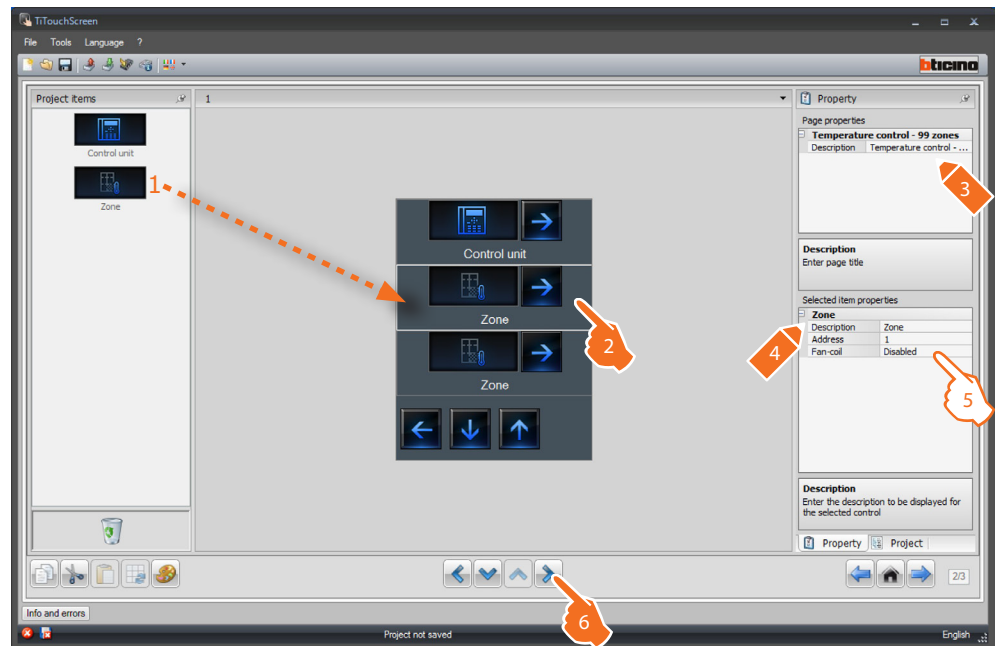


4.7 Temperature control

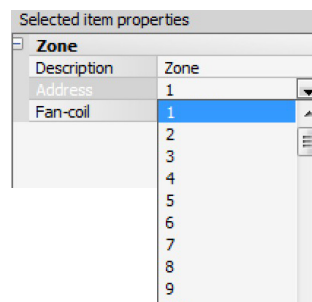
This application gives the user the possibility of controlling and adjusting the heating and air conditioning systems, adjusting the temperature zone-by-zone, according to the current requirements.



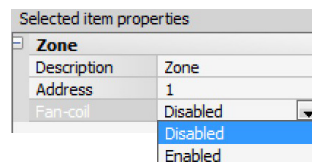
Zone



5. Configuration of **Zone**:



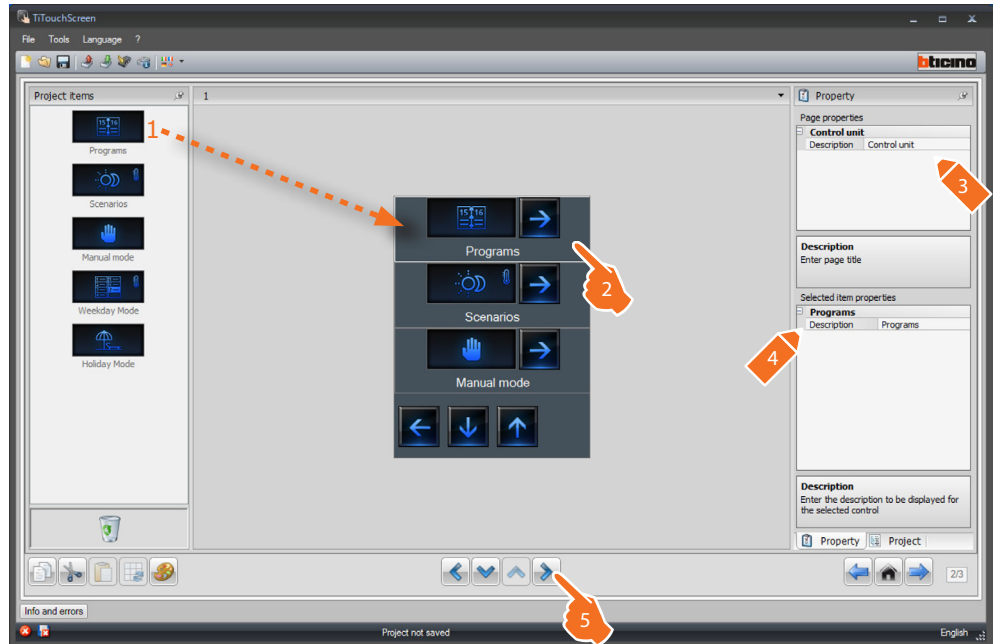
Address: select the value corresponding to the configurators connected within the zones to be controlled.



Fan-coil: select if the Fan-coil function should be enabled or disabled.

 **Warning:** If the 4-zone central unit is selected, each zone will have a dedicated preset icon.

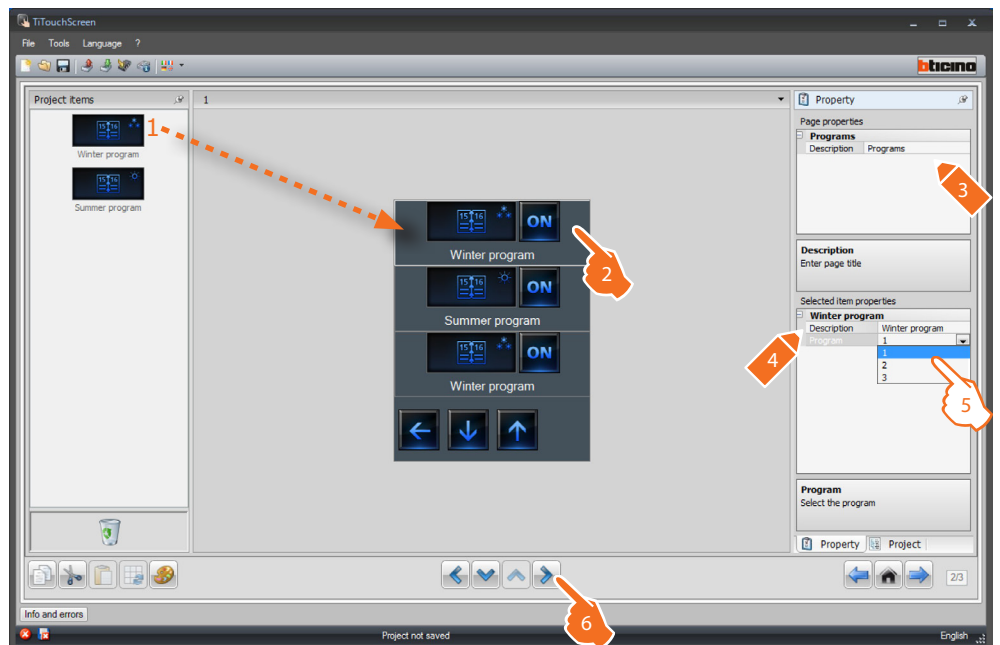
The page includes 5 functions. Based on the programming of the actual central unit it will be possible to choose which ones to display on the device.



Programs

The page shows the functions representing the **winter programs** and the **summer programs**.

Based on the programming of the actual central unit it will be possible to choose which ones to display on the device.

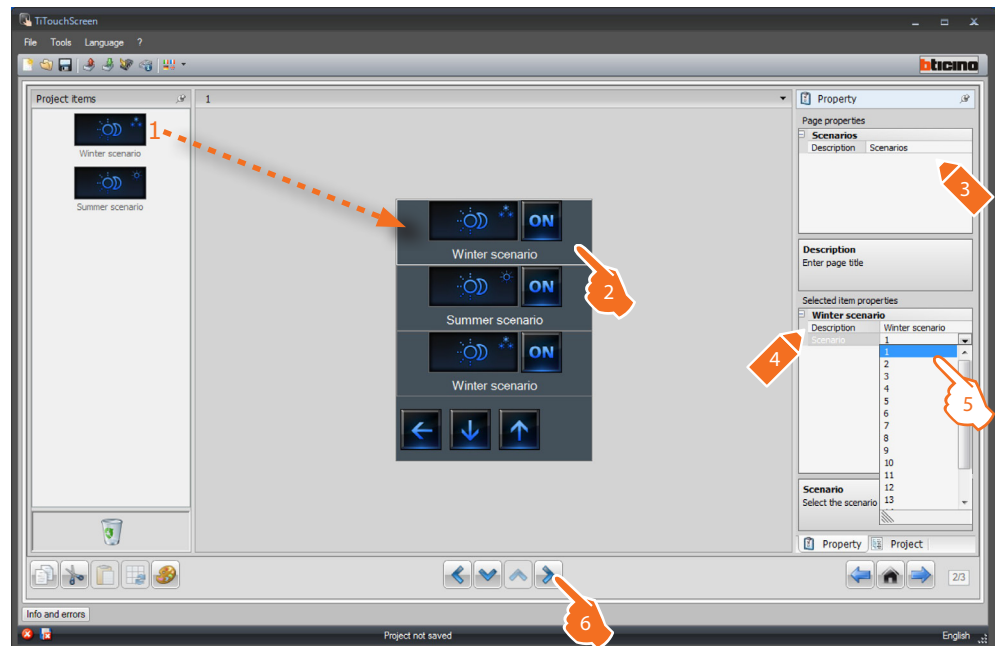


5. It is possible to associate the number of the program on the central unit.

Scenarios

The page shows the functions representing the **winter scenarios** and the **summer scenarios**.

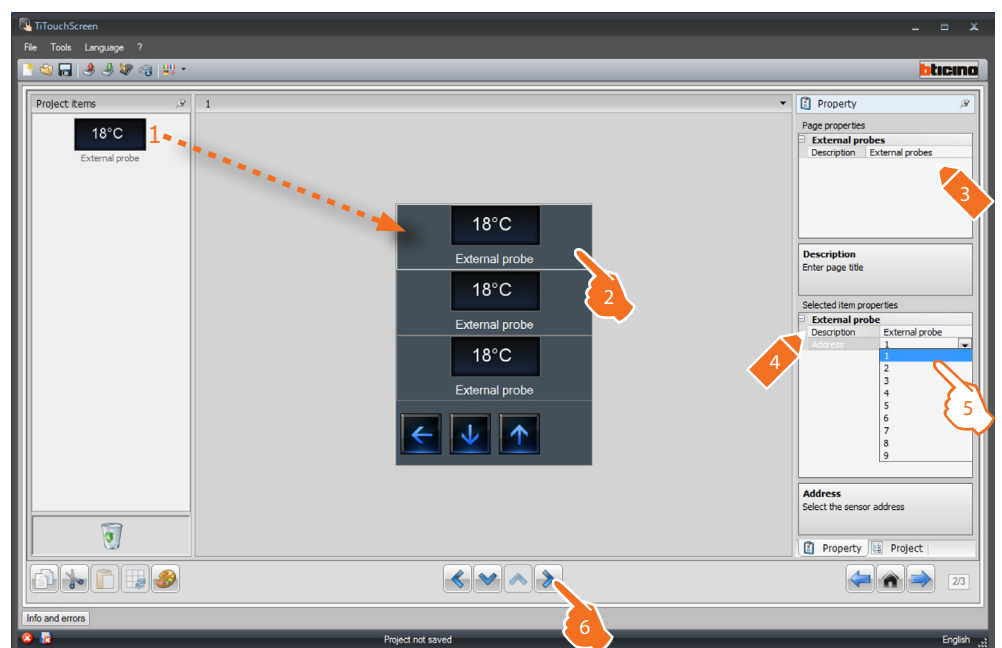
Based on the programming of the actual central unit it will be possible to choose which ones to display on the device.



5. It is possible to associate the number of the scenario present on the central unit.

External probes

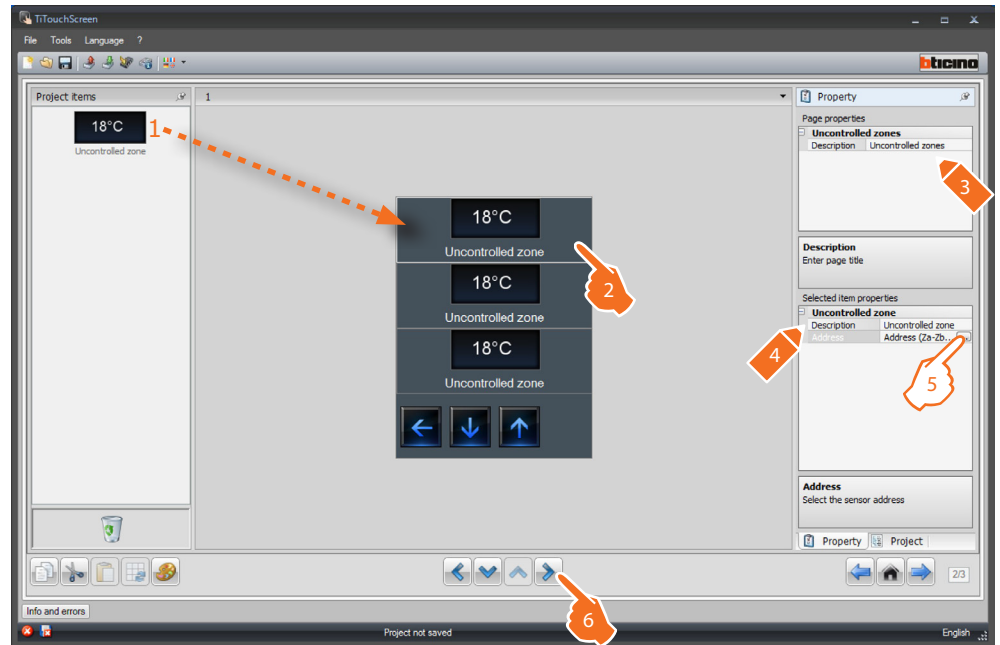
This page can be used to connect the external probes within the system.



5. It is possible to select the address of the external probe to associate.

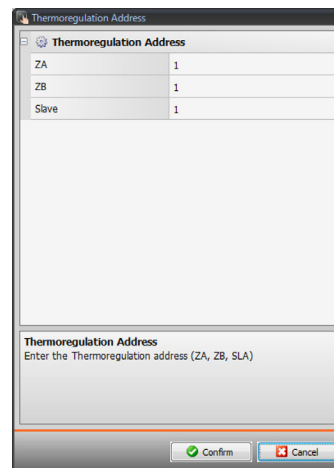
Uncontrolled zones

This page can be used to connect the uncontrolled zones (measurement only) within the system.



5. Configuration of **Uncontrolled zones**:

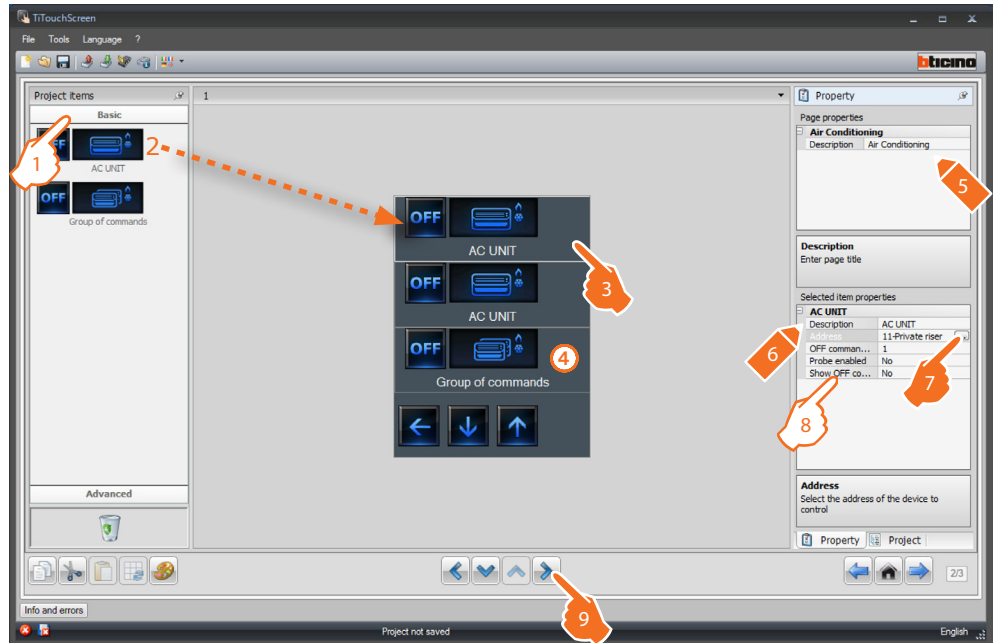
Click  to configure the address.




ZA, ZB, Slave = configure in the same way as the probe of the uncontrolled zone.

Air conditioning (basic mode)

In this page it is possible to include all the AIR CONDITIONING functions installed in the system.



 For each of the objects included in this page it will be possible to include the desired controls, as shown in the following pages.

1. Select the Configuration mode.
If Basic mode is selected, the air conditioning equipment will be managed through the system, using only the 20 commands saved on the 3456 interface.
4. This command will be displayed on Touch Screen and can be used to control several Splitters (AC unit) of the system at the same time.
8. Configuration of **Splitter (AC unit)**:

Selected item properties	
AC UNIT	
Description	AC UNIT
Address	11-Private riser
OFF command...	1
Probe enabled	1
Show OFF co...	2
	3
	4

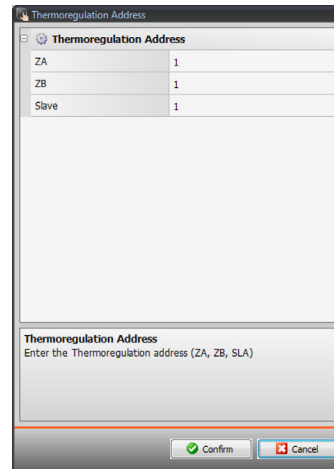
OFF command address: enter the number of the command configured as OFF on the 3456 interface.

Selected item properties	
AC UNIT	
Description	AC UNIT
Address	11-Private riser
OFF command...	1
Probe enabled	Yes
Probe address	No
Show OFF co...	Yes

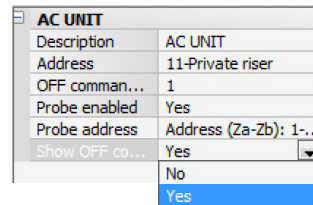
Probe enabled: select "Yes" if the slave probe is present (for the measurement of the temperature of the associated zone).

Selected item properties	
AC UNIT	
Description	AC UNIT
Address	11-Private riser
OFF command...	1
Probe enabled	Yes
Probe address	Address (Za-Zb...)
Show OFF co...	No

Probe address: click  to configure the address of the SLAVE probe.



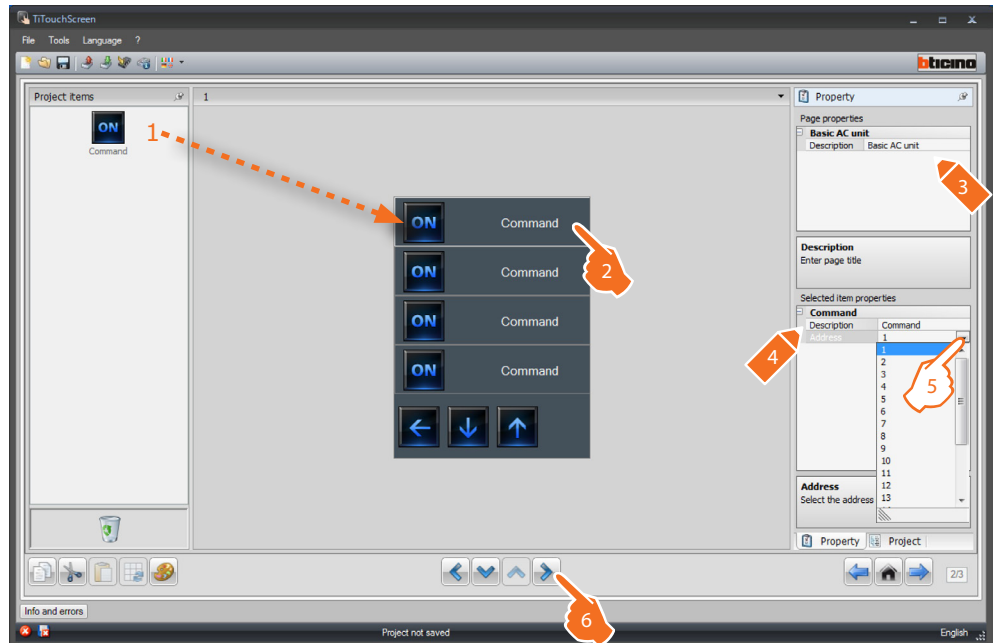
ZA, ZB, Slave = configure in the same way as the probe.



Show OFF command: select "Yes" to display on Touch Screen the OFF command associated to the Splitter (AC unit).

Splitter Controls (AC unit)

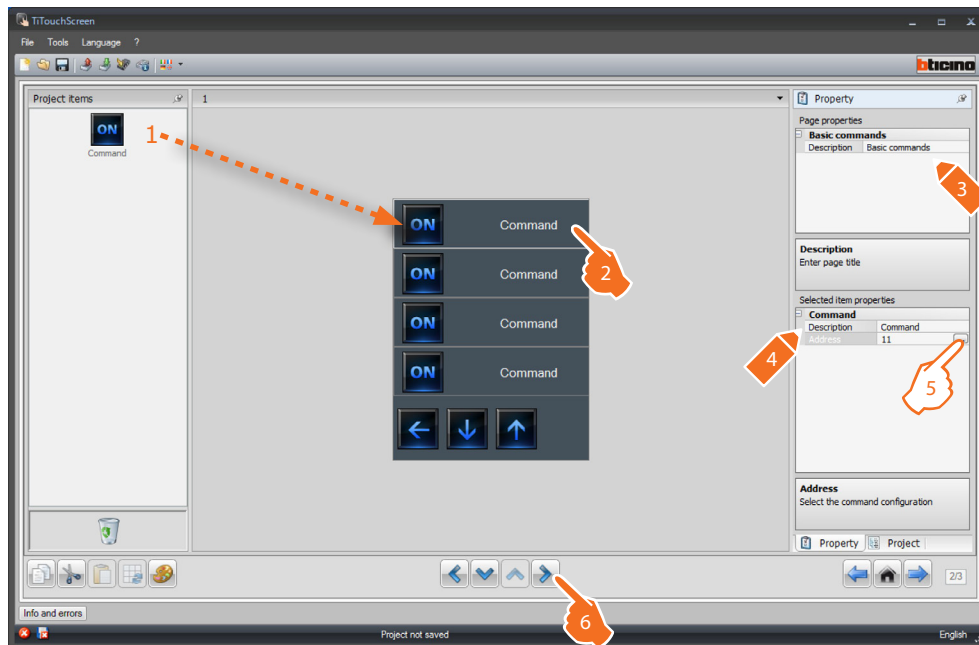
In this page it is possible to include some favourite commands, selected among the 20 available on the 3456 interface.



- 5. Configuration of a favourite command:**
Click to configure the command address.

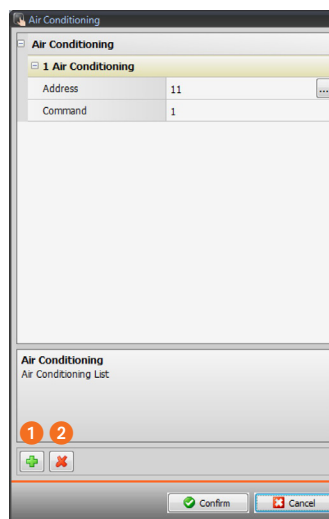
Group of Commands

In this page it is possible to include some preferred commands, selected among the 20 available on the 3456 interface.



5. Configuration of a preferred command:

Click to configure the command address.



Address: click to enter the address of the command.

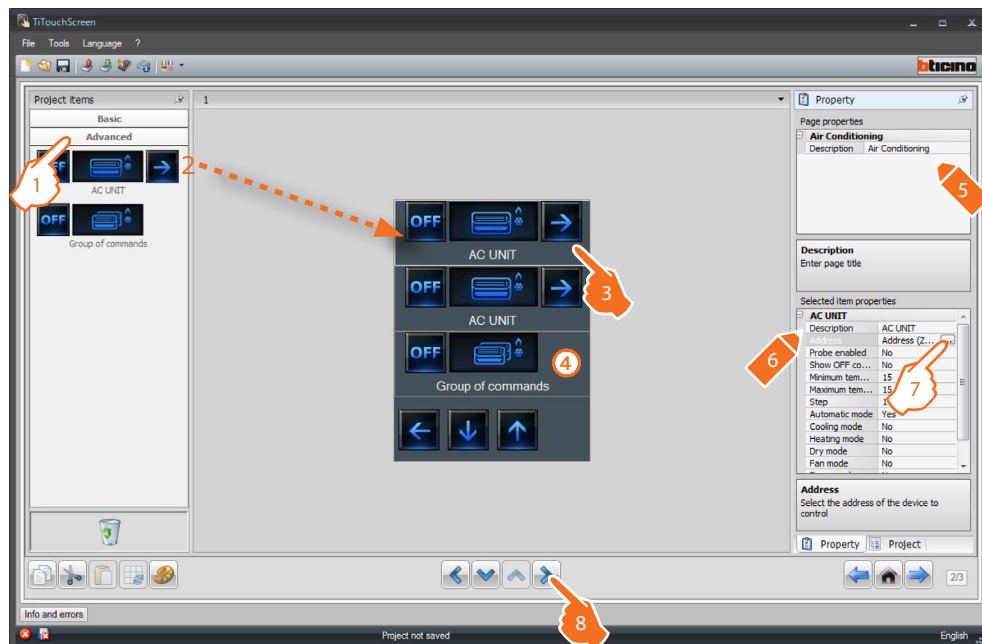
Command: select the command number (1 - 20).


1 =: add a command.


2 =: delete a command.

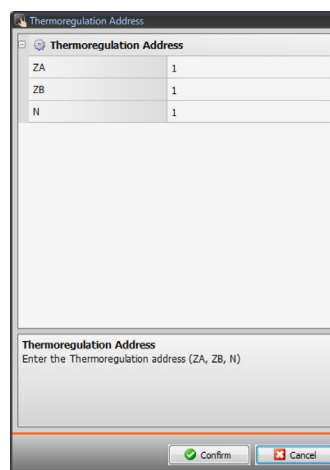
Air conditioning (advanced mode)

In this page it is possible to include all the AIR CONDITIONING functions installed in the system.

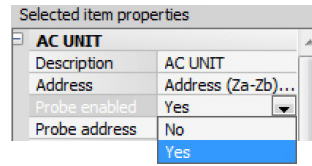


 For each of the objects included in this page it will be possible to include the desired controls, as shown in the following pages.

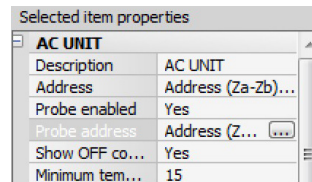
1. Select the configuration mode.
If Advanced mode is selected, the air conditioning equipment will be managed directly as if using the Splitter (AC unit) remote control.
4. This command will be displayed on Touch Screen and will enable switching off all the Splitters (AC unit) installed on the system.
7. Configuration of **Splitter (AC unit)**:
Click  to configure the Splitter address (AC unit).



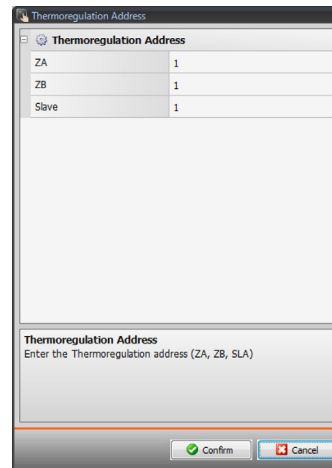
ZA, ZB, N = configure in the same way as the 3456 interface.



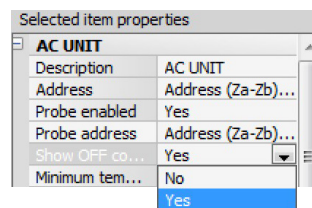
Probe enabled: select "Yes" if the slave probe is present (for the measurement of the temperature of the associated zone).



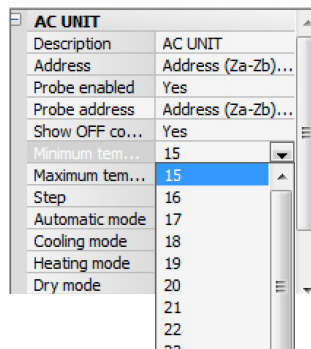
Probe address: click  to configure the SLAVE probe address.



ZA, ZB, Slave = configure in the same way as the probe.

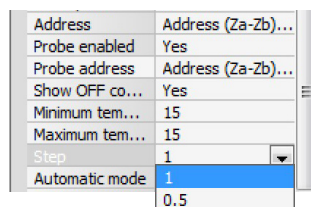


Show OFF command: select "Yes" to display on Touch Screen the OFF command associated to the Splitter (AC unit).

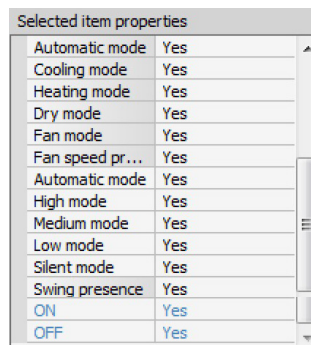


Minimum temperature: select the minimum temperature that can be set on the Splitter (AC unit)

Maximum temperature: select the maximum temperature that can be set on the Splitter (AC unit)



Step: select the desired increase step among the different temperature values (0.5° C or 1° C)



Mode:

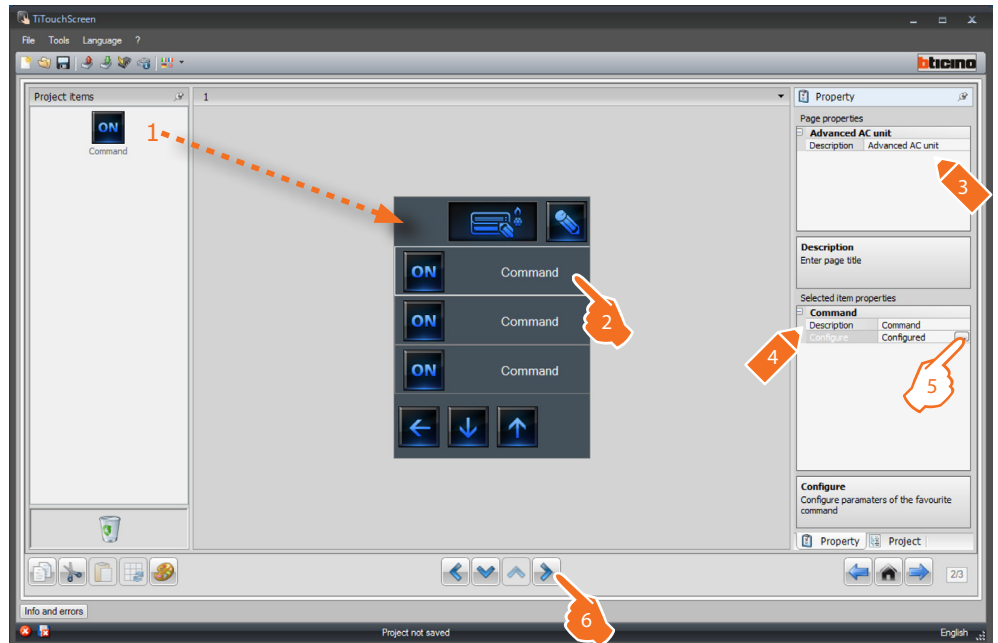
Select "Yes" if the Splitter (AC unit) includes the following modes:

- Automatic;
- Cooling;
- Heating;
- Dry;
- Fan;
- Fan speed presence:
 - Automatic;
 - High;
 - Medium;
 - Low;
 - Silent;
- Swing presence

Warning: The configuration of the splitter (AC unit) parameters depends on the functions of each individual splitter installed.

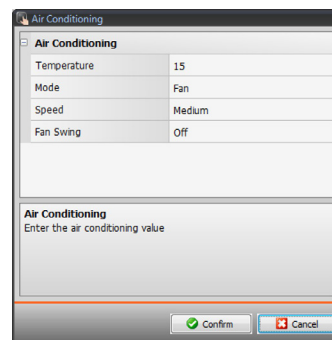
Splitter Commands (AC unit)

In this page it is possible to include some preferred commands, selected among the 20 available on the 3456 interface.



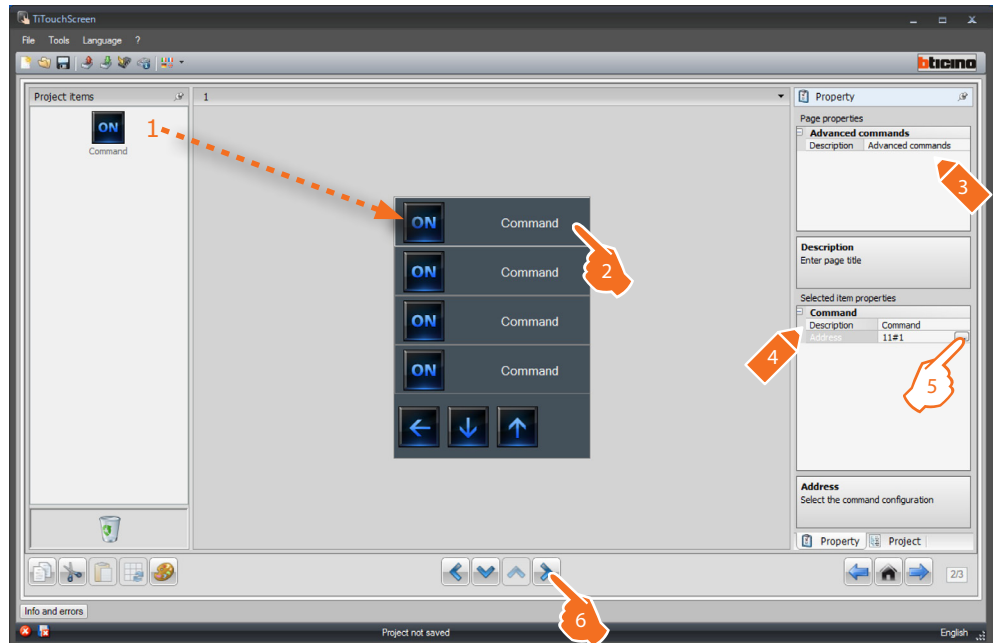
5. Configuration of a **preferred command**:

Click  to configure the command.



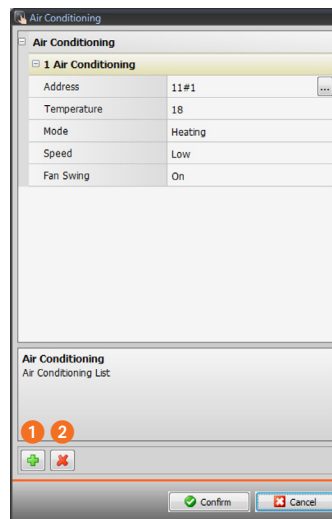
Group of Commands

In this page it is possible to include some preferred commands, selected among the 20 available on IrSplit.



5. Configuration of a **preferred command**:

Click to configure the command address.



Address: click to enter the address of the command.

Temperature: select the temperature to associate to the command.

Mode: select the mode to associate to the command.

Speed: select the speed to associate to the command.

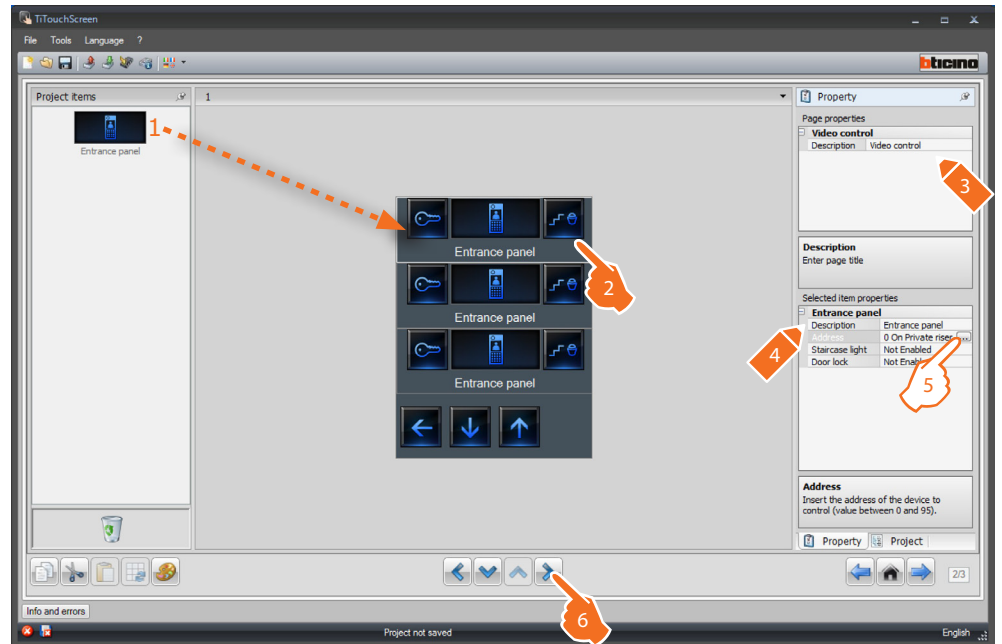
Fan Swing: select if the swing should be on or off.

1 =: add a command.


2 =: delete a command.

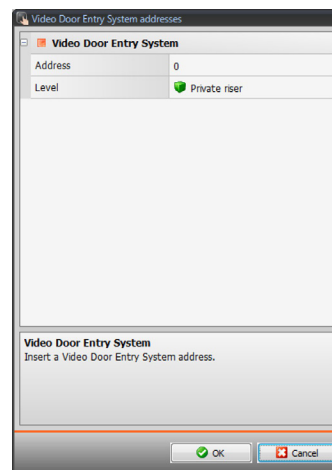
4.8 Video door entry system

With the video door entry system application, depending on the video door entry system installed the user can configure which entrance panels can be controlled by Touch Screen and control for each entrance panel the release of the door lock and/or the switching on of the staircase lights.



5. Configuration of Entrance panel:

Click  to configure the entrance panel address.



Select the address corresponding to the configurator connected to the device to command.

Selected item properties	
Entrance panel	
Description	Entrance panel
Address	0 On Private riser
Staircase light	Enabled <input type="checkbox"/>
Door lock	Not Enabled <input type="checkbox"/>
	Enabled <input checked="" type="checkbox"/>

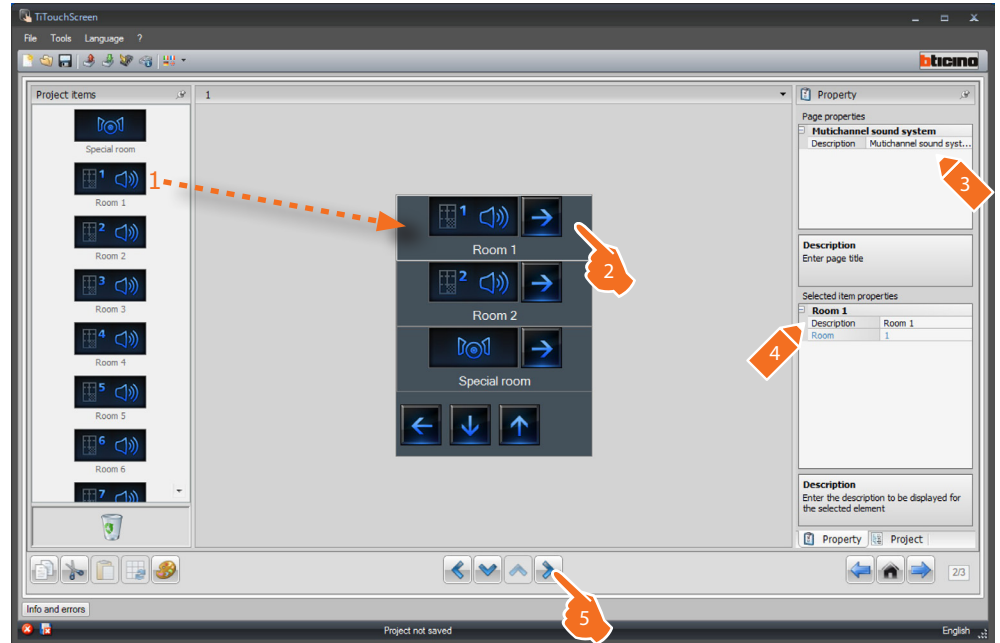
Staircase light: enable/disable the Staircase light command.

Selected item properties	
Entrance panel	
Description	Entrance panel
Address	0 On Private riser
Staircase light	Enabled <input type="checkbox"/>
Door lock	Enabled <input type="checkbox"/>
	Not Enabled <input type="checkbox"/>
	Enabled <input checked="" type="checkbox"/>

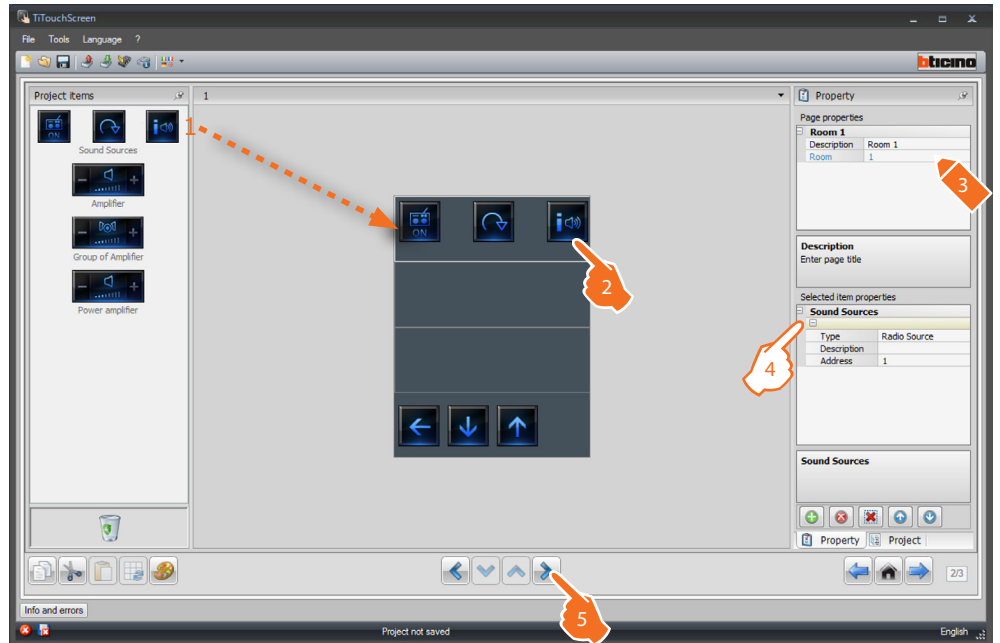
Door lock: enable/disable the Door lock command.

4.9 Sound system

The Sound System application gives the possibility of selecting and controlling the sound, broadcasting it in several rooms at the same time; differently from the standard sound system, the multichannel sound system gives the possibility of having different music broadcasted in separate rooms at the same time.

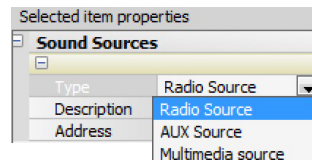


Multimedia sources

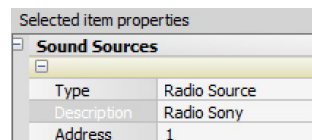


4. Configuration of Multimedia sources:

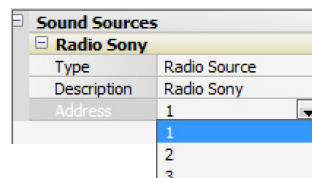
Type: select the type of source (Radio source / AUX source / Multimedia source). "The Radio source refers to the Radio Tuner, the Aux source to an external source (e.g.: CD player) connected to the Stereo Control, or to an RCA input. The Multimedia source refers to the Multimedia Touch Screen that represents the source of the system.



Warning: If Touch Screen is used as sound system source, the same address must not be used for another source.



Description: enter a customised description of the selected sound source

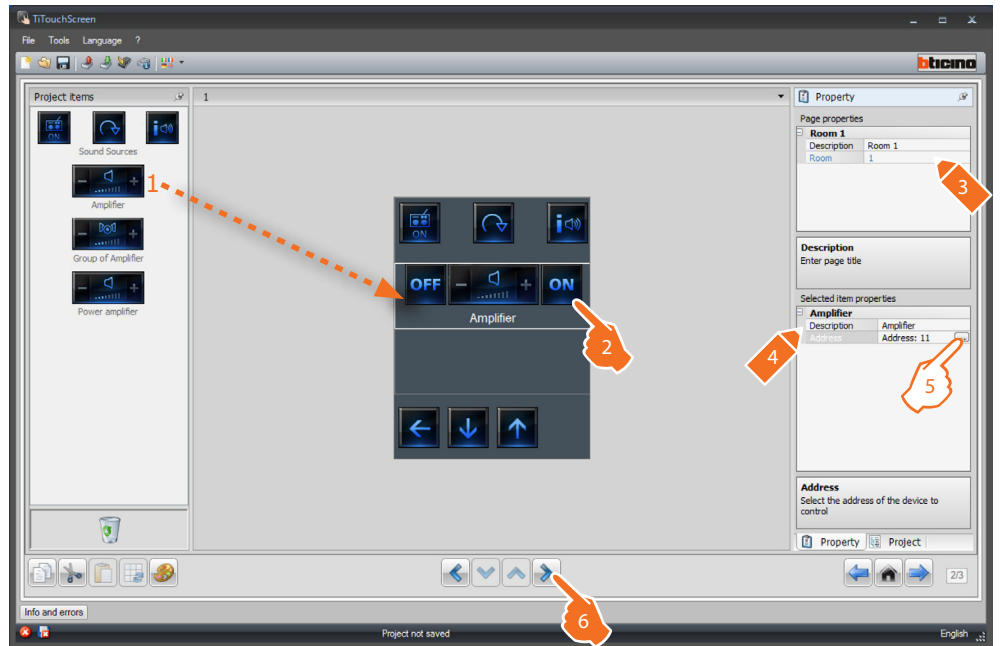


Address: select an address for the selected sound source




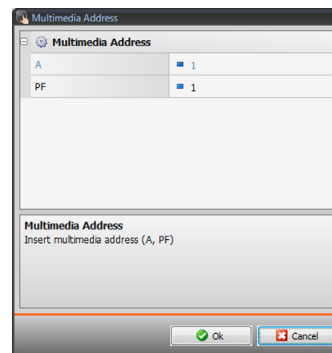
Add sources 1, remove the selected source 2, remove all sources 3 and organise the sources in the desired order 4.

Amplifiers



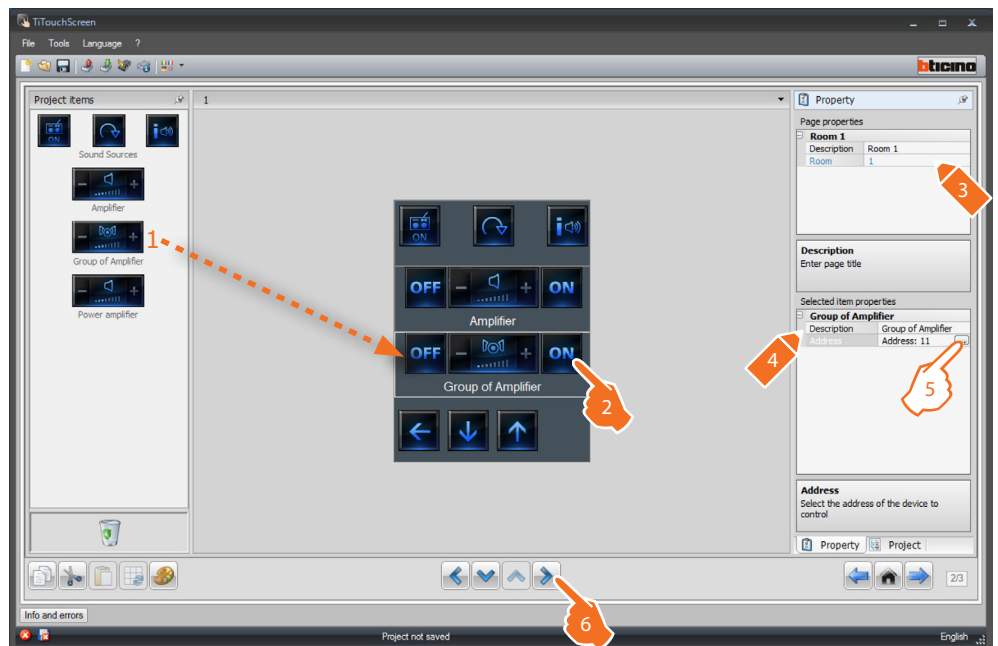
5. Configuration of Amplifiers:

Click  to configure the amplifier address.



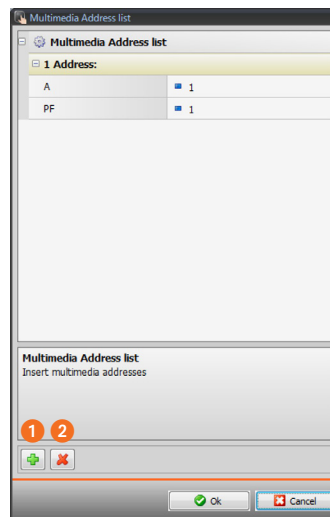
A, PF = configure in the same way as the device to control.

Group of amplifiers



5. Configuration of Group of amplifiers:

Click to configure the amplifiers addresses.



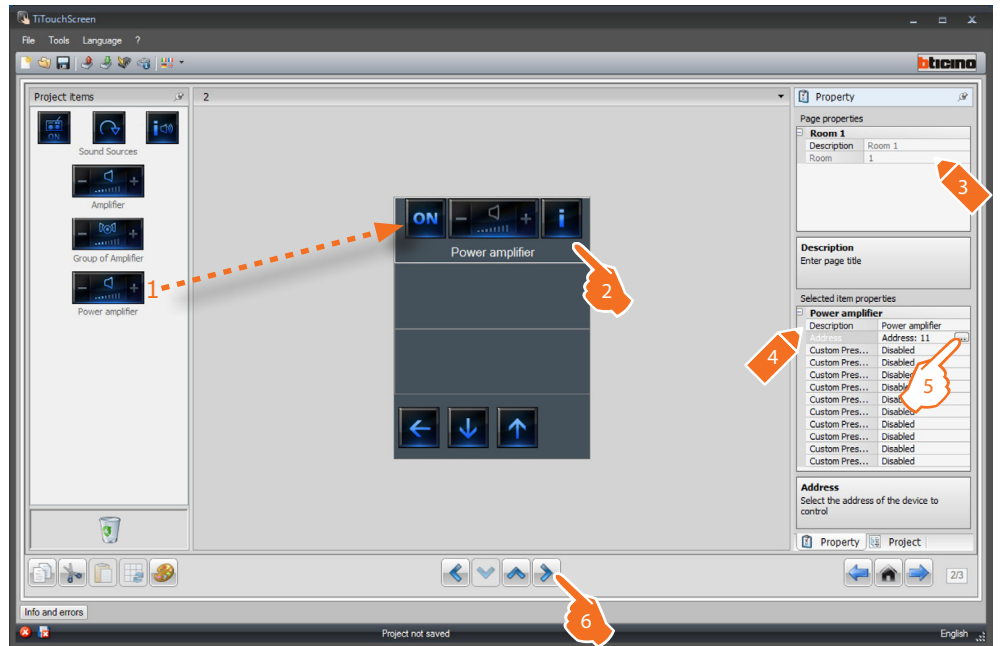
A = Room: select the value corresponding to the configurator connected to **A** on the device to control.

PF (LS) = Loudspeaker: select the value corresponding to the configurator connected to **PF (LS)** of the device to control.

① =: add an amplifier.

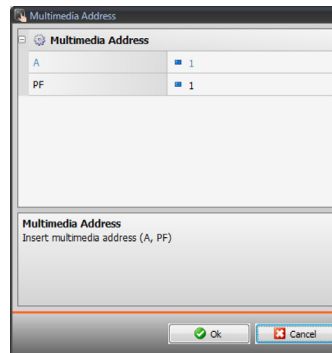
② =: delete an amplifier.

Power amplifier



5. Configuration of Power amplifier:

Click  to configure the Power amplifier address.



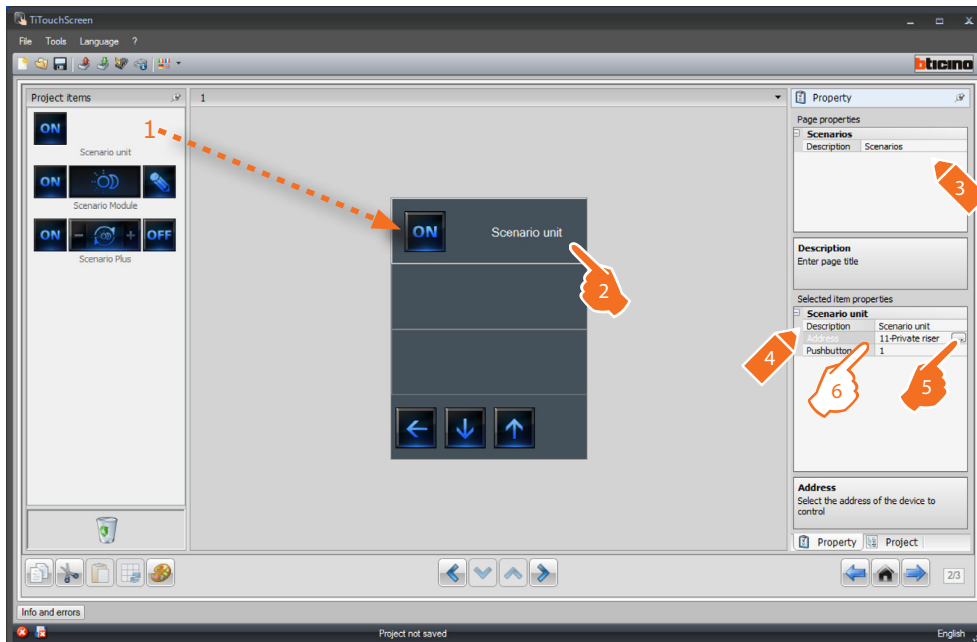
A, PF = configure in the same way as the device to control.

Selected item properties	
Power amplifier	
Description	Power amplifier
Address	Address: 11
Custom Pres...	Disabled
Custom Pres...	Disabled
Custom Pres...	Disabled
Custom Pres...	Disabled
Custom Pres...	Disabled
Custom Pres...	Disabled
Custom Pres...	Disabled
Custom Pres...	Disabled
Custom Pres...	Disabled
Custom Pres...	Disabled

Custom preset: enable/disable a custom preset.

4.10 Scenarios

The Scenarios application gives the possibility of enabling and modifying the system scenarios.

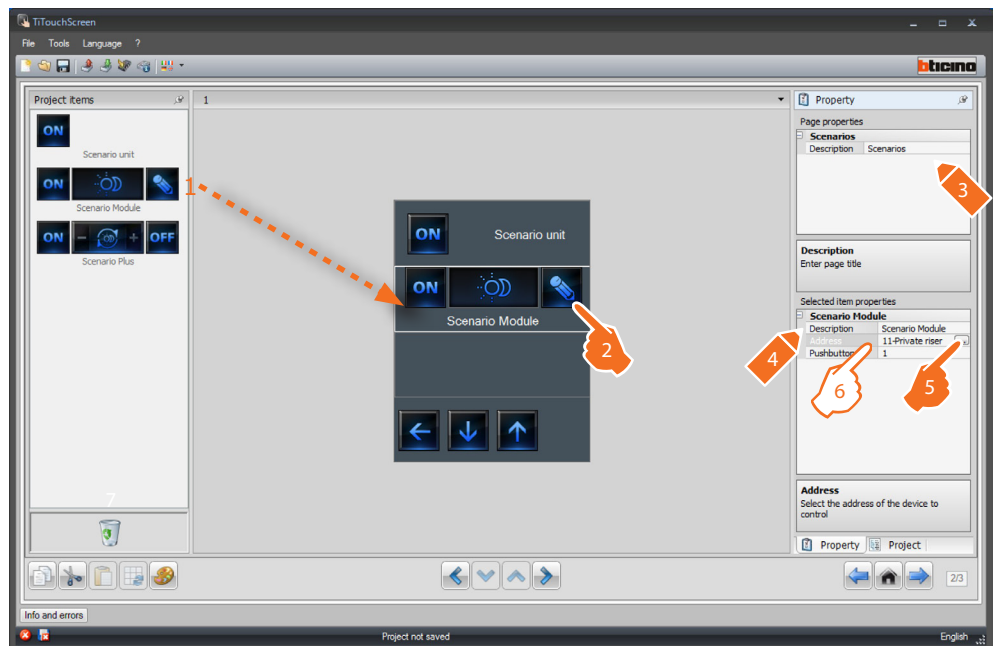



6. Configuration of Scenario unit:

Selected item properties	
Scenario unit	
Description	Scenario unit
Address	11-Private riser
Pushbutton	1
	1
	2
	3
	4

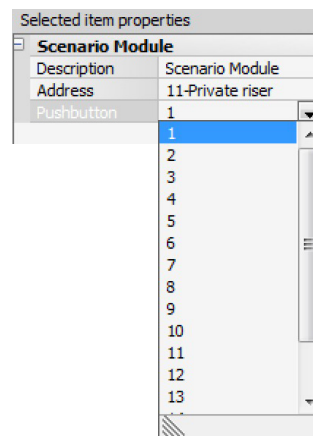
Pushbutton: select the number corresponding to the pushbutton.

Scenario module



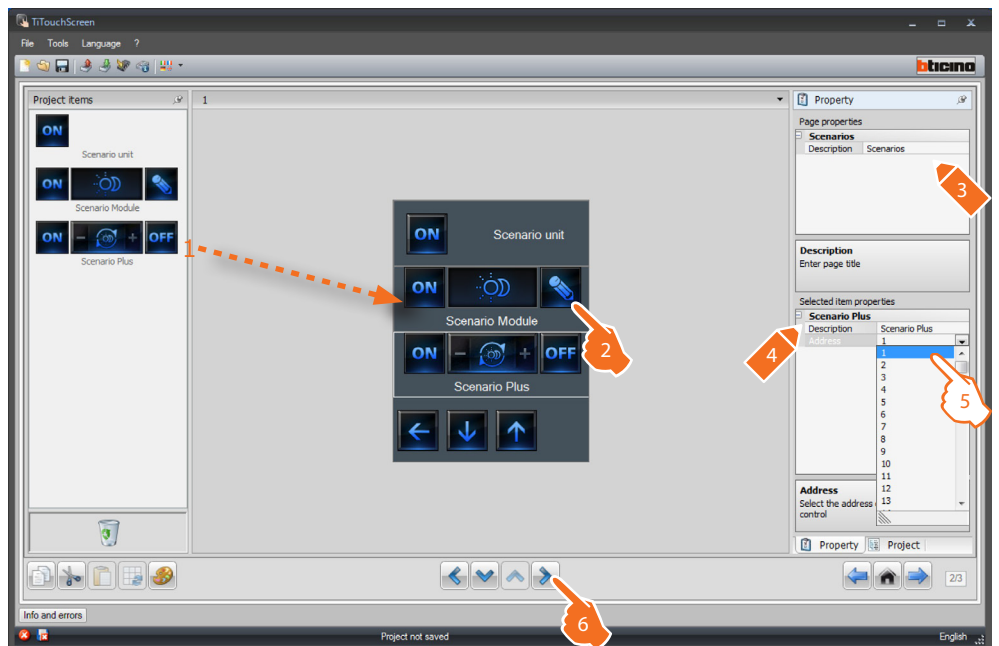
 *The scenario module may be used to save up to 16 scenarios maximum.*

6. Configuration of **Scenario module**:



Pushbutton: select the scenario among the recommended ones: the corresponding one in the scenario module.

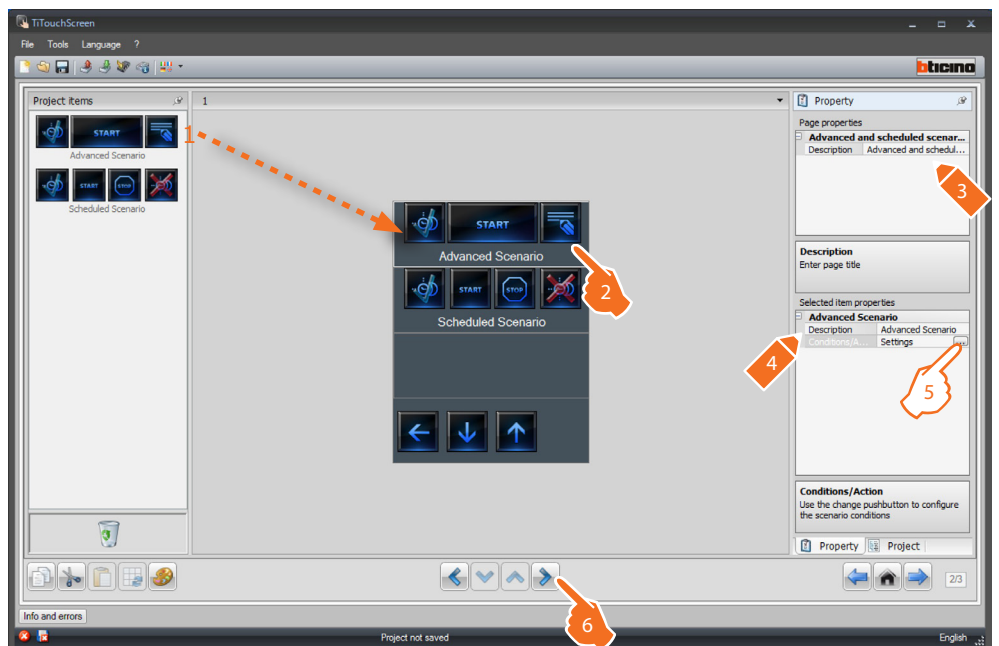
Scenarios Plus



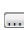
5. It is possible to enter the address number of the Scenario PLUS.

4.11 Advanced and scheduled scenarios

This application can be used to send a command at a preset time, and when an action occurs (**advanced scenarios**), or to control the scenarios programmed in the scenario programmer (**scheduled scenarios**).




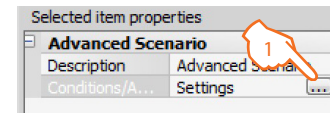
5. Configuration of **Advanced and scheduled scenarios**:


Click  to configure the advanced scenario.

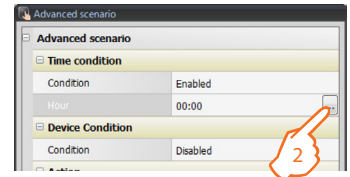
Advanced scenario:

if at 8.00 p.m. (**time condition**) the amplifier configured with A1 LS1 is off (**device condition**), an ON command is generated for the amplifier configured with A1 LS1 (**Action**).

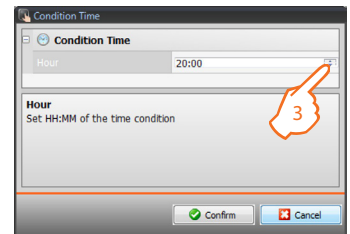
1. Click  to access the configuration of an advanced scenario.



2. Click  to set the **Condition Time** (if present).



3. Select the time interval (hours and minutes).

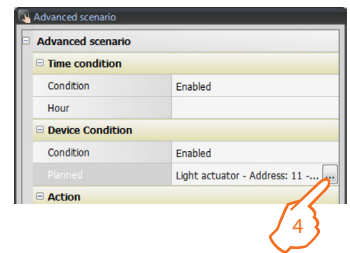


4. Click  to set the **Device condition** (if present).

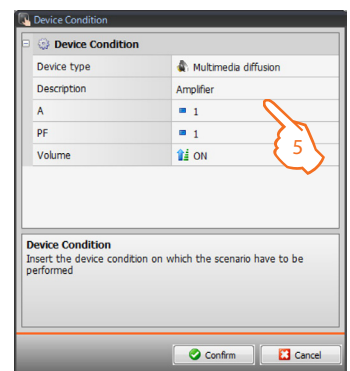
The Device condition item does not need to be set.


If set, this may be referred to:

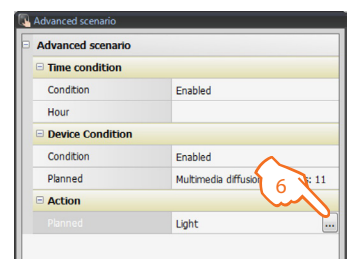
- a Light Actuator
- a Dimmer 10
- a Dimmer 100
- a Temperature Control
(controlled zone, external probe or uncontrolled zone)
- an Amplifier
- an Auxiliary Device



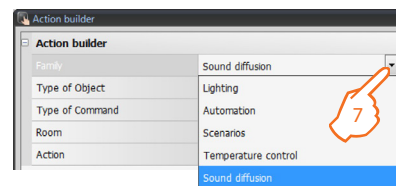
5. Enter the condition of the device (configuring the corresponding parameters) on which the scenario must be configured.



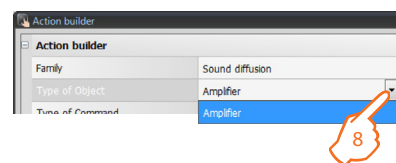
6. Click  to set the command that will be generated when the previous conditions occur.



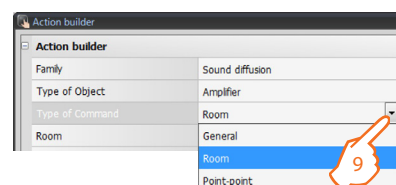
7. Generate the action to perform. Select the family the command that will be generated belongs to.



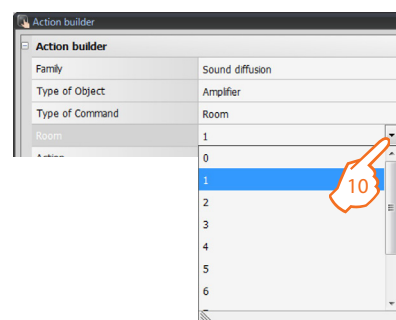
8. Select the type of object.



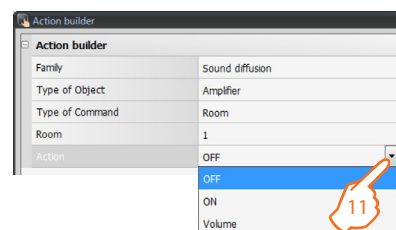
9. Select the type of command to send to the object.



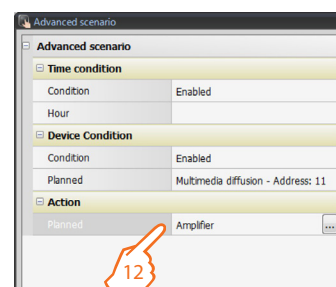
10. Configure the object address.



11. Select the action to send to the object.



12. The action has been created correctly.




Scheduled scenarios:

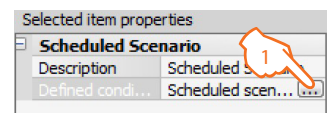
It is impossible to intervene on scenarios programmed in the scenario programmer. The four possible actions are:

- Start
- Stop
- Enable
- Disable

The Start and Stop commands are start/stop conditions of the scenarios.


The Enable and Disable commands (configurable in pair), are commands that give or withdraw the consent to the scenario programmer, for the execution of the scenarios themselves.

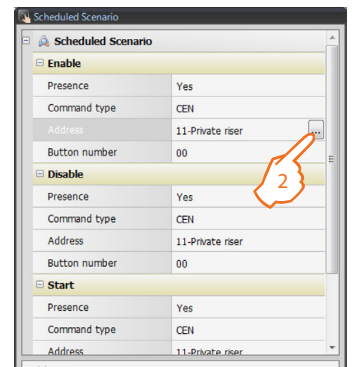
1. Click  to access to the configuration of a scheduled scenario.



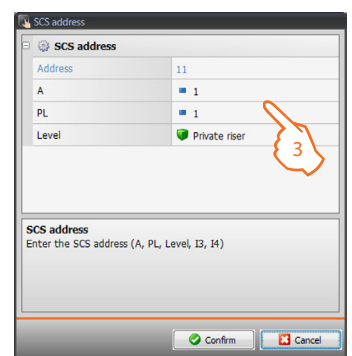
2. **Enable:** it gives the possibility of setting a CEN command with the enabling of the scenario.

Disable: it gives the possibility of setting a CEN command with the disabling of the scenario.

Click  to access to the configuration of a scheduled scenario.



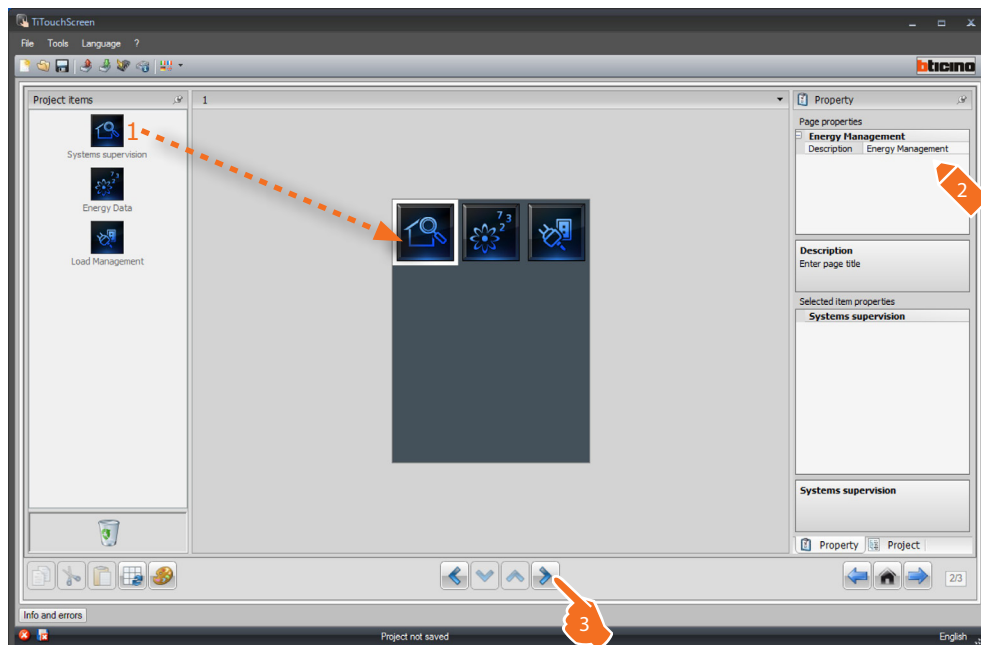
3. Configure the CEN command address (see "Common Configurations").



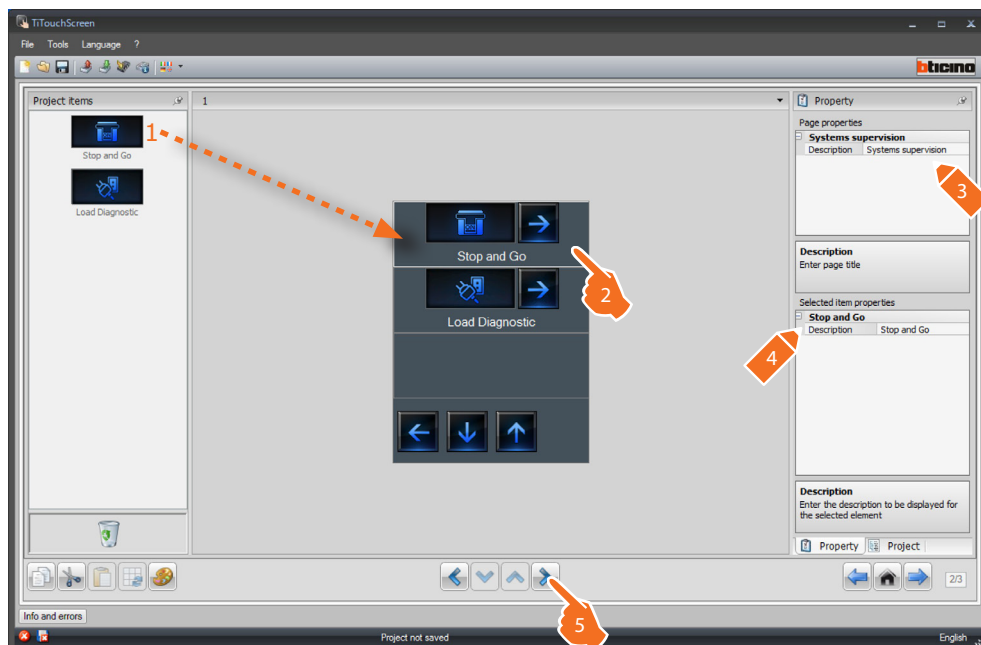
Repeat the same operations for the **Stop, Enable/Disable** conditions.

4.12 Energy management

This application enables the user to control the status of the energy loads, display consumptions/productions of energy, supervise the electric system, controlling the rearming of life saving (salvavita) devices.

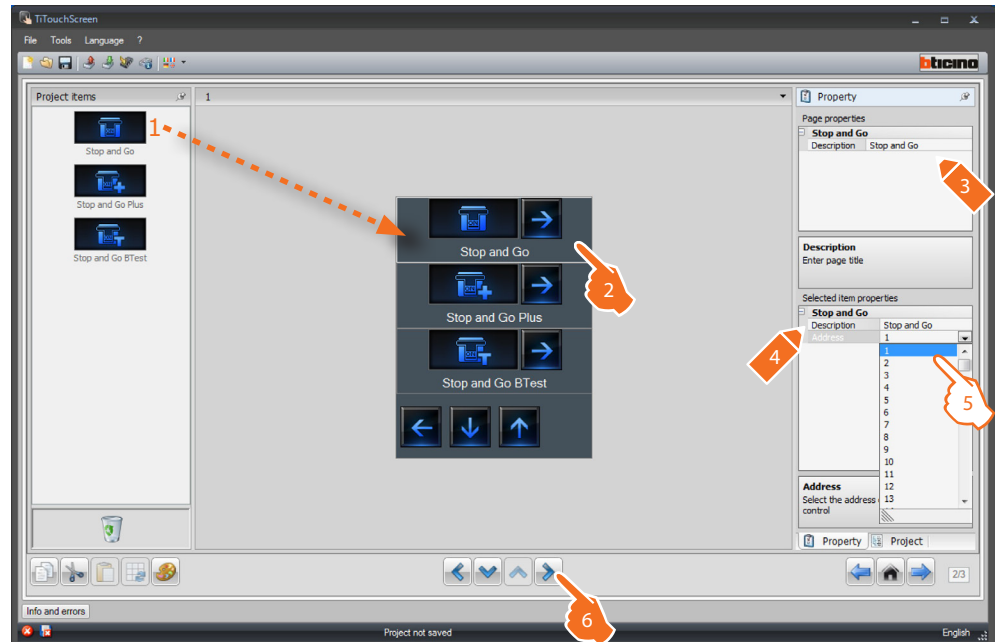


System supervision



Stop and Go


This section can be used to configure Stop & Go circuit breakers for the control of the automatic earth leakage relay reset function.




5. Configuration of **Stop and Go**, **Stop and Go Plus**, **Stop and Go BTest**:

Select the device address value.

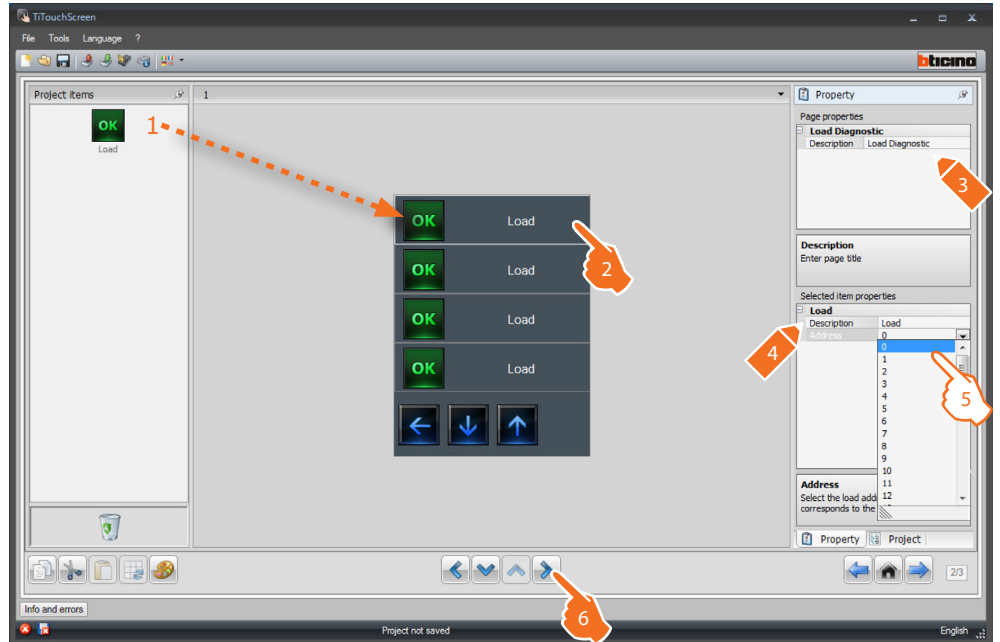
The value can be between 1 and 127 and corresponds to the value of the configurators connected to the device configurator socket (e.g.: A1 = "1"; A2 = "2" and A3 = "5" corresponds to address 125).

 *Warning: Up to a maximum of 20 devices may be configured.*

 *Warning: The three devices have the same configuration procedures.*

Load diagnostic

The "Load diagnostic" function is used to check that the loads are working correctly, by measuring their earth leakage current consumptions.

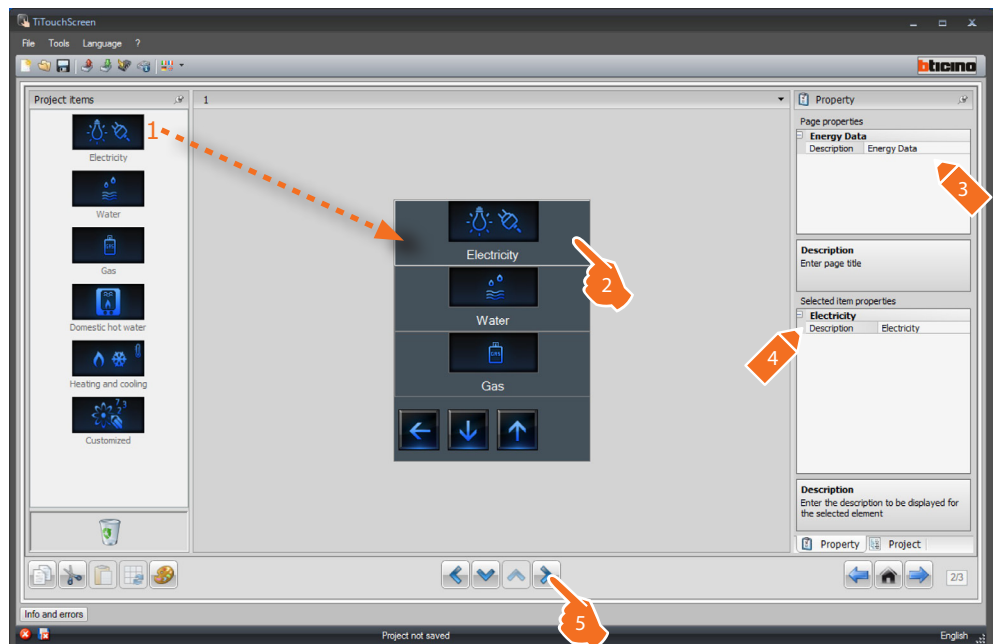


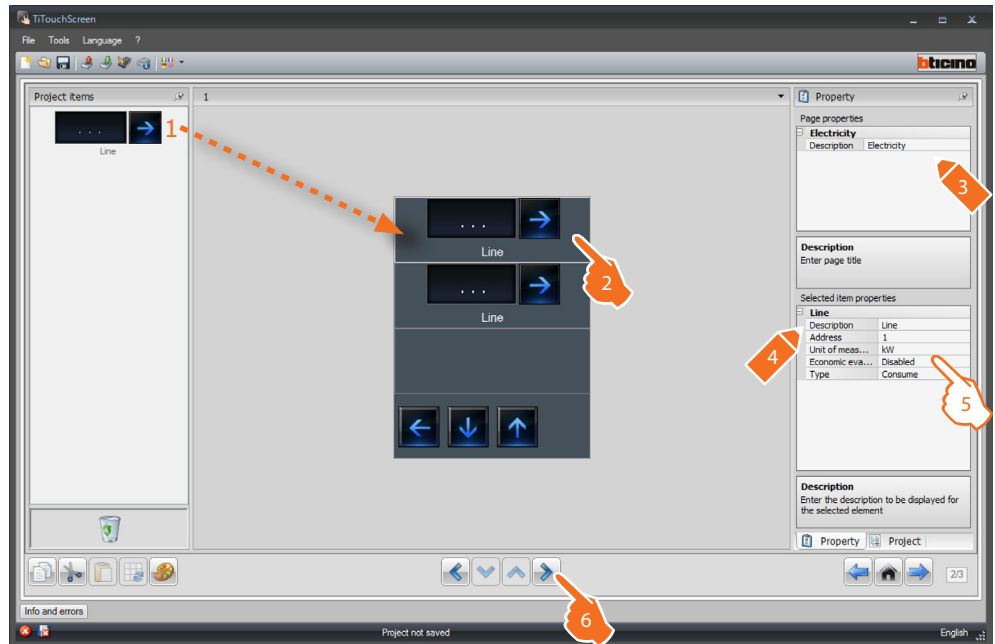
5. Configuration of Load diagnostic:

Select the device address value. The value can be between 1 and 64 and corresponds to the value of the configurators connected to the configurator socket of the device.

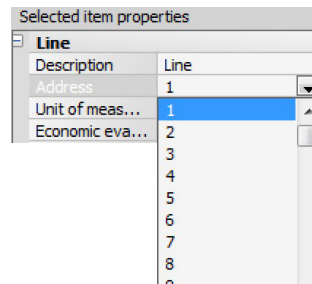
Consumption/Production display

This section can be used to configure the parameters that give the possibility of displaying the data (consumption/production) measured on the system. The available meters are: electricity, water, gas, domestic hot water and heating/cooling.

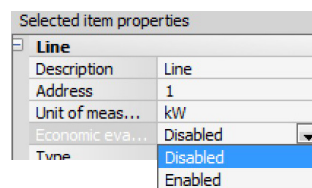




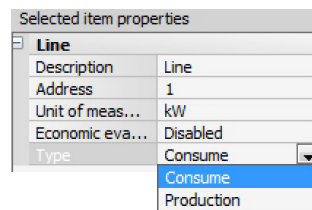
5. Configuration of Line:




Address: select the meter address (1 - 255).




Economic evaluation: enable or disable the economic evaluation of the object.



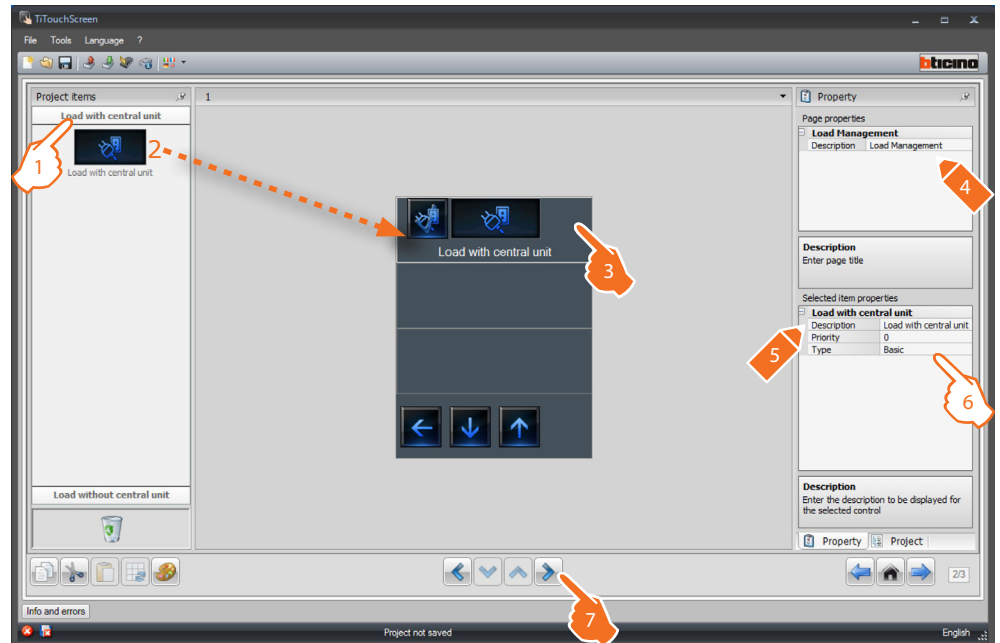
Type: select the type of measurement between Consumption and Production.

 If "Consumption measurement" or "Production measurement" are enabled, the corresponding tariffs must also be set (see the corresponding chapter).

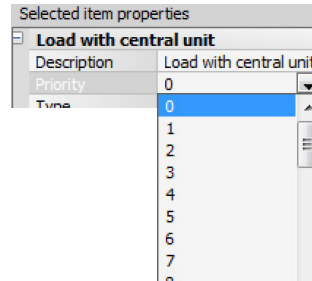
 The economic evaluation is an indicative data.

 This manual only describe the electricity item. TiTouchScreen manages all the items in the same way.

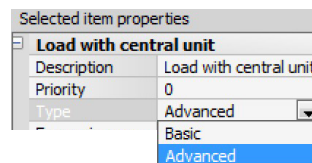
Load management (with load management central unit installed)



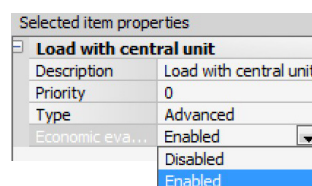
1. Select the load management mode.
6. Configuration of **Loads** (with central unit):



Priority: select the priority to assign to the load (1 - 255).

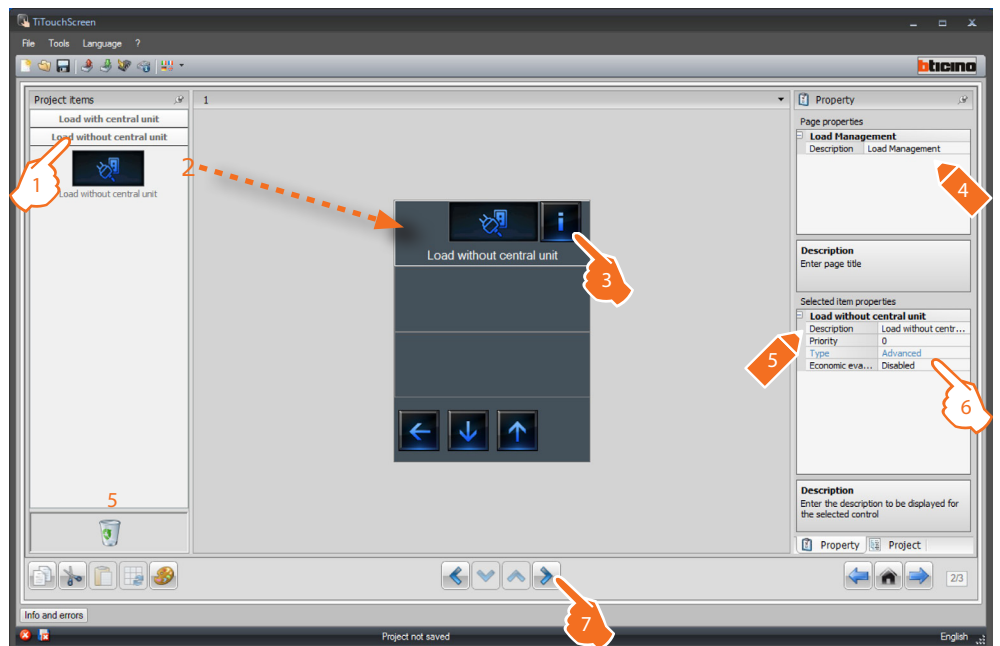


Type: select Advanced mode if the system includes actuators with current sensors (advanced actuators); Touch Screen will have meters that may be reset at any time, to monitor consumption, in addition to the display of the instantaneous consumption of the load.

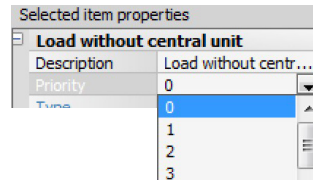


Economic evaluation: enable or disable the economic evaluation of the measurement.

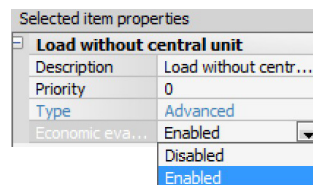
Load management (without central unit)



- 1. Select the load management mode
- 6. Configuration of **Loads** (without central unit):



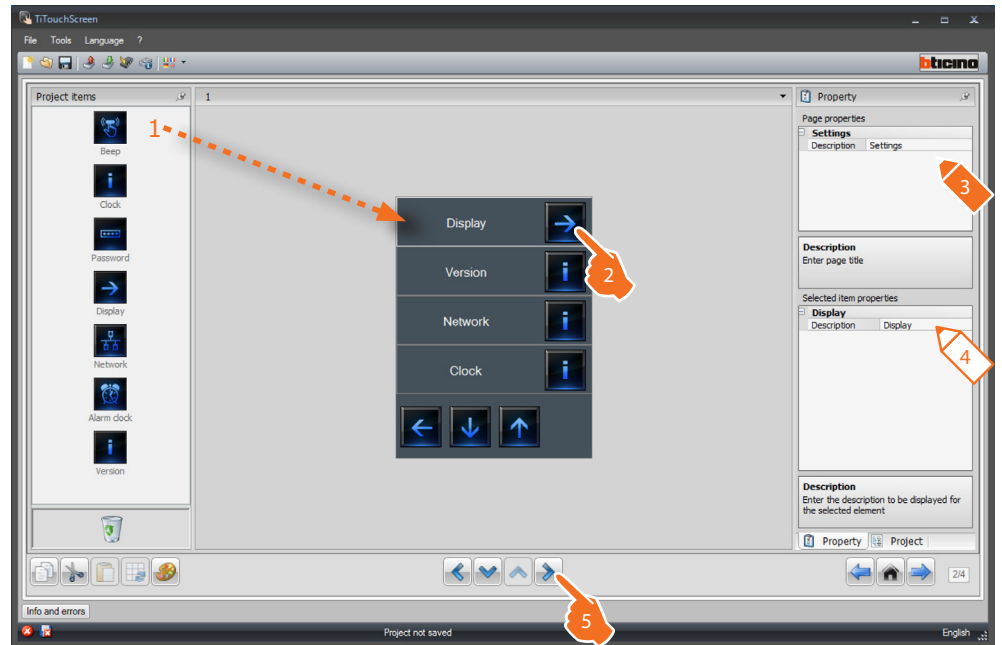
Priority: select the priority to assign to the load (1 - 255).



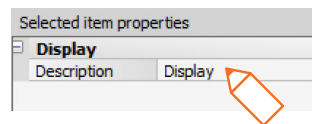
Economic evaluation: enable or disable the economic evaluation of the measurement.

4.13 Settings

This application can be used to include functions for a better customisation of Touch Screen. The **Display**, **Version**, **Network**, and **Clock** functions are included by default and cannot be removed.

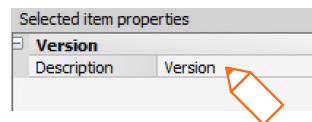


4. Configuration of **Display**:



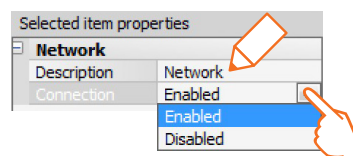
It enables entering a customised description of the Display object.

4. Configuration of **Version**:



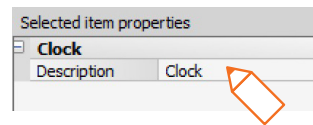
It enables entering a customised description of the Version object.

4. Configuration of **Network**:



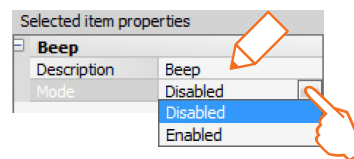
It enables entering a customised description of the Network object and select if Touch Screen network card should be enabled or disabled.

4. Configuration of **Clock**:



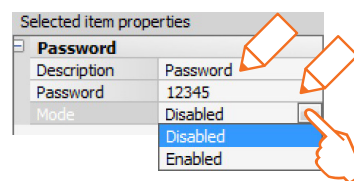
It enables entering a customised description of the Clock object.

4. Configuration of **Beep**:



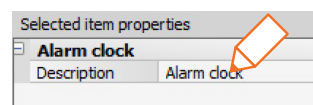
It enables entering a customise description of the Beep object and to select if enabling/disabling the sound when the icons are touched.

4. Configuration of **Password**:



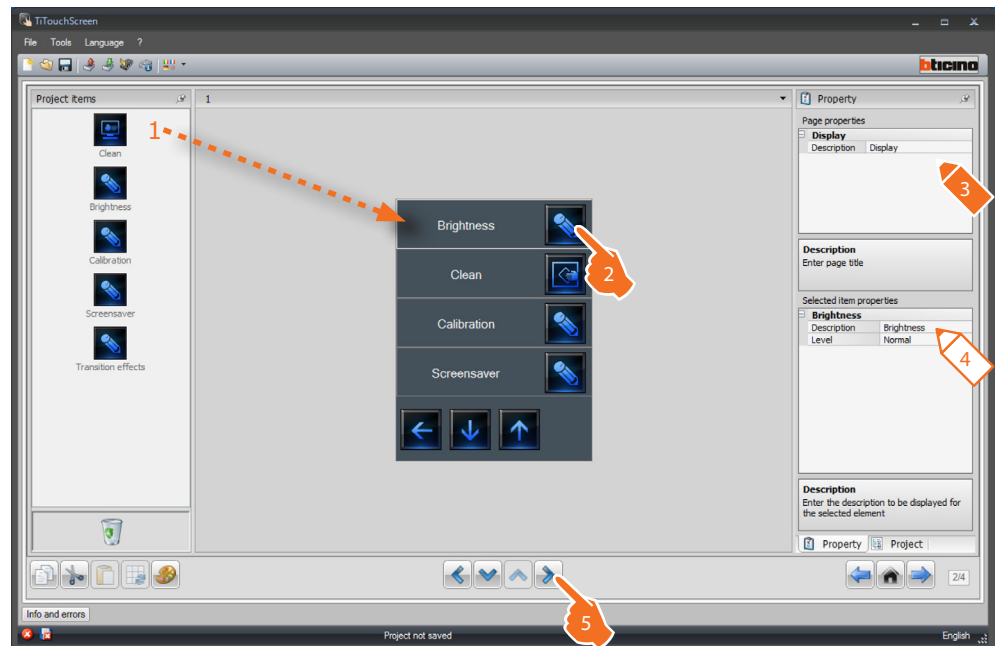
It enables entering a customised description of the Password object, and to enter a preferred numerical password, which can then be disabled or enabled.

4. Configuration of **Alarm clock**:

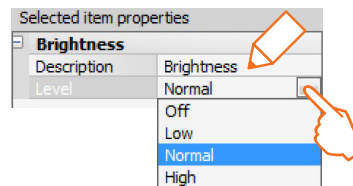


It enables entering a customised description of the Alarm clock object.

Display

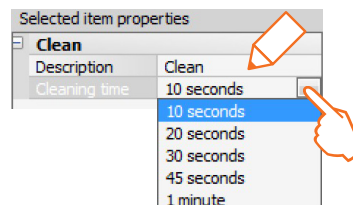


4. Configuration of **Brightness**:



It enables entering a customised description of the Brightness object and to select the brightness level to apply during Screensaver mode.

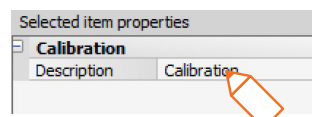
4. Configuration of **Clean**:



It enables entering a customised description of the Clean object and to select a time interval between 10 seconds and 1 minute. Touch Screen will be disabled for the selected period, to enable cleaning.

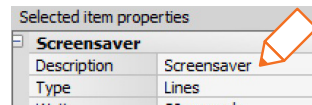
 **Warning:** Never clean using solvents, thinners etc., or abrasive products.

4. Configuration of **Calibration**:

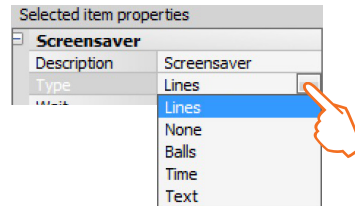


It enables entering a customised description of the Calibration object.

4. Configuration of **Screensaver**:



Description: enter a customised description of the Screensaver object.



Type: select the type of Screensaver (lines, none, balls, time, text).

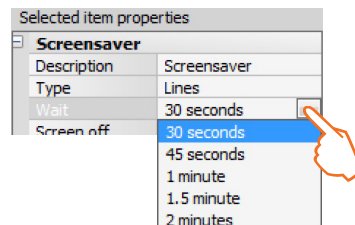
No screensaver: the display turns dark. The level of darkness depends on the set brightness level.

Line: a grey line slides from top to bottom.

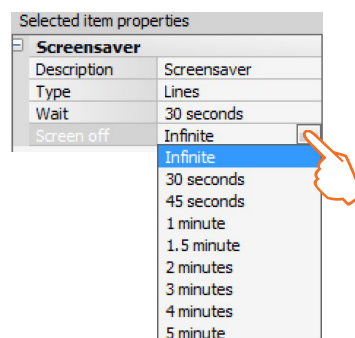
Balls: coloured bubbles appear on the screen.

Time: a grey line with the current time slides from top to bottom.

Text: a grey line with text (customisable using TiTouchScreen) slides from top to bottom.

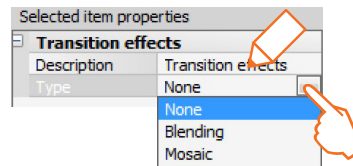


Wait: select the time delay for the activation of the screensaver.



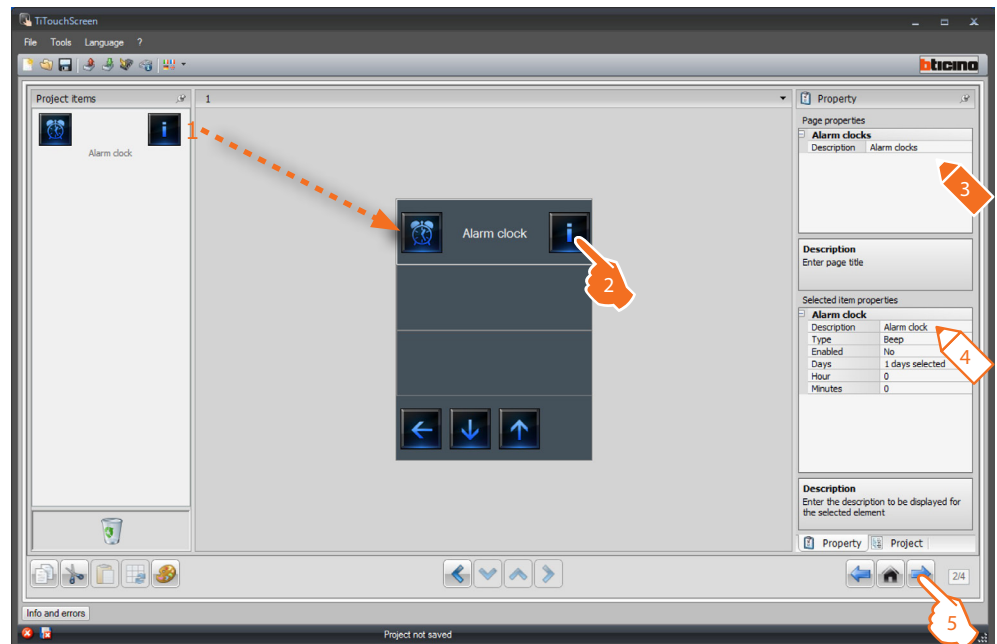
Screen off: select the time delay for the switching off of the screen.

4. Configuration of **Transition effects**:

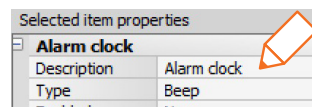


It enables entering a customised description of the Transition Effects object and to select the type of effect.

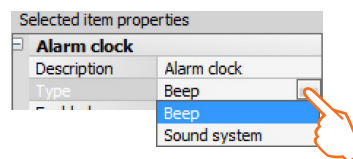
The "Alarm clock" function (if previously included) gives the possibility of enabling/disabling, and setting Touch Screen alarm clock. If sound system is selected, it will be possible to set (from the device) one or more rooms of the sound system, on which the alarm clock will be activated, and the source to switch on (stereo control/radio, etc.).



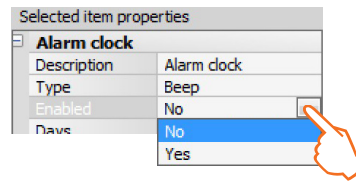
4. Configuration of **Alarm clock**:



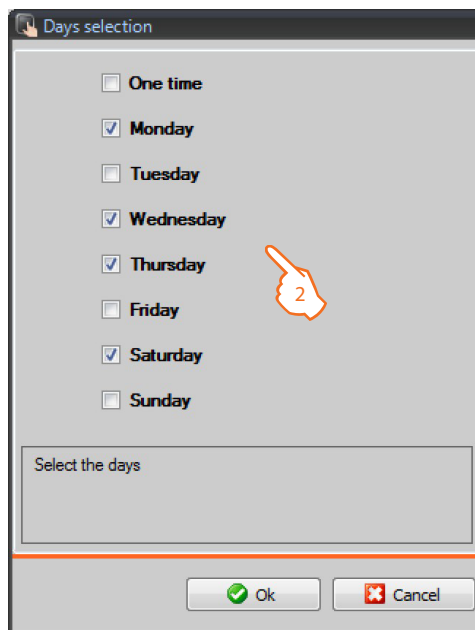
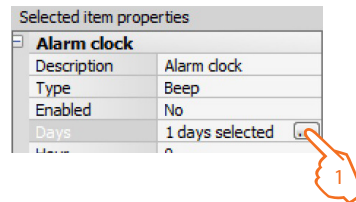
Description: enter a customised description of the Alarm Clock object.



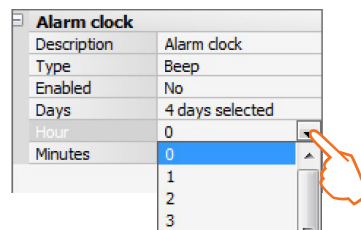
Type: select the type of alarm clock (Beep or sound system).



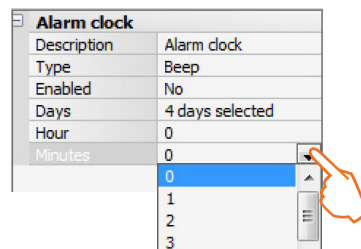
Enabled: select if the alarm clock should be enabled or disabled.




Days: select the days during which the alarm clock will be active.



Hour: select the time the alarm clock will activate.

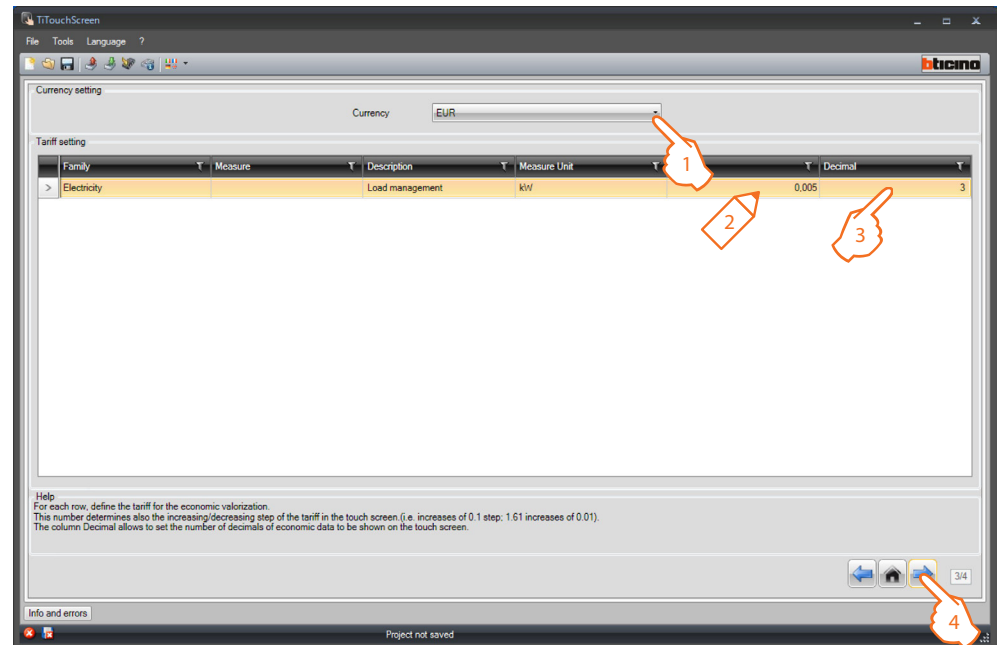



Minutes: select the minutes when the alarm clock will activate.

- Once the page configuration/customisation operation has been completed click the  pushbutton to go to the next page.

4.14 Tariff setting

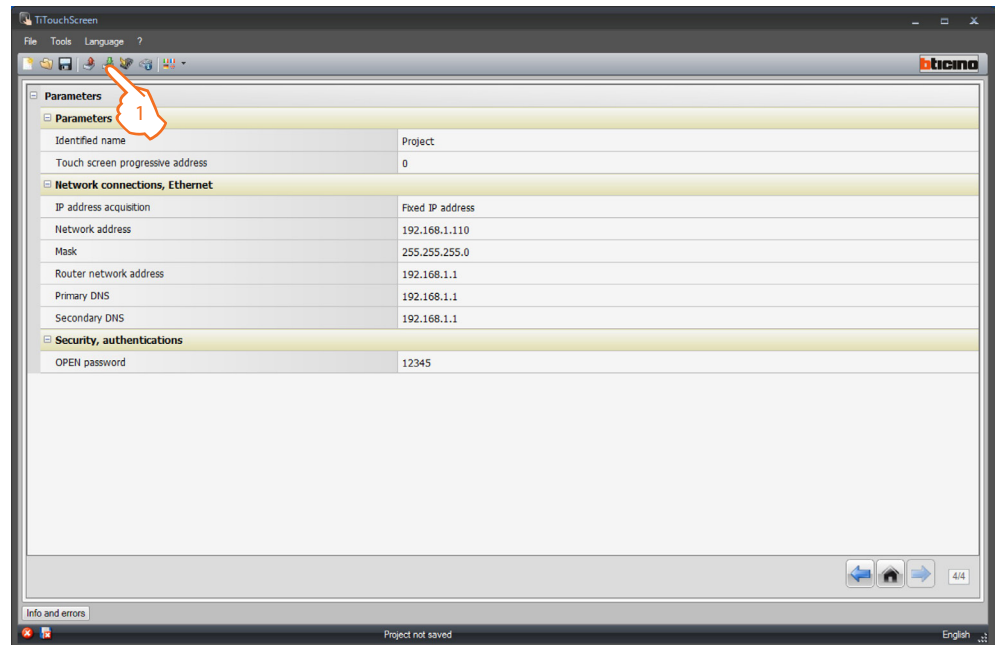
This page enables setting the tariffs that will be applied to the consumptions set in the "Consumption Display" and "Load Management" sections.



1. Select the currency.
2. Enter the tariff.
3. Enter the number of decimals to display on Touch Screen for the evaluation.
4. Once the page configuration operation has been completed click the  push-button to go to the next page.

4.15 Parameters

This screen can be used to set the device configuration parameters.



- **Parameters**

Identified name: enter the name to assign to Touch Screen.


Touch Screen progressive address: enter the identification number of the device on the system.

- **Network connection, Ethernet**

Set the network parameters of Touch Screen based on the features of the network where it will be installed.

- **Security, authentications**

Open password: enter the OPEN password for remote access to Touch Screen.

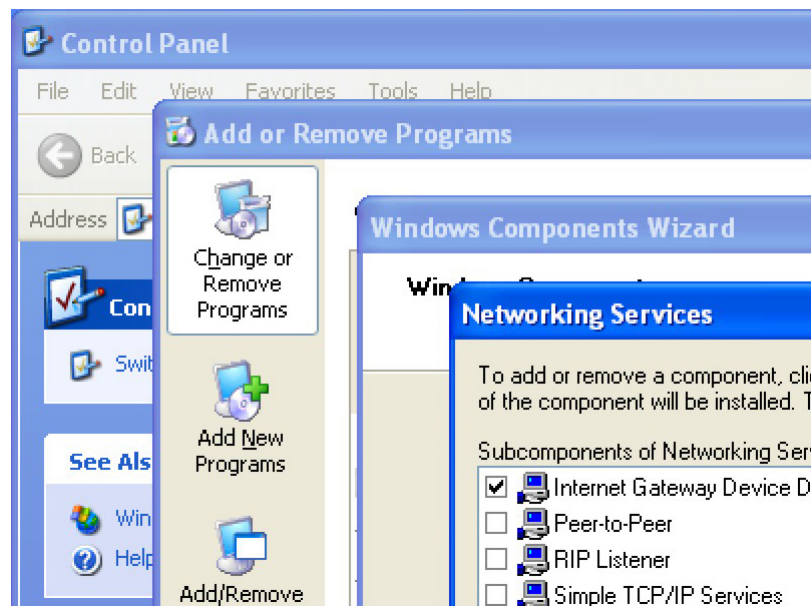
1. Once the parameter configuration operation has been completed click the  pushbutton to transfer the project created to the device. To send the configuration see the corresponding section .

5. UPnP and Firewall services settings

5.1 How to activate Windows Services for UPnP:

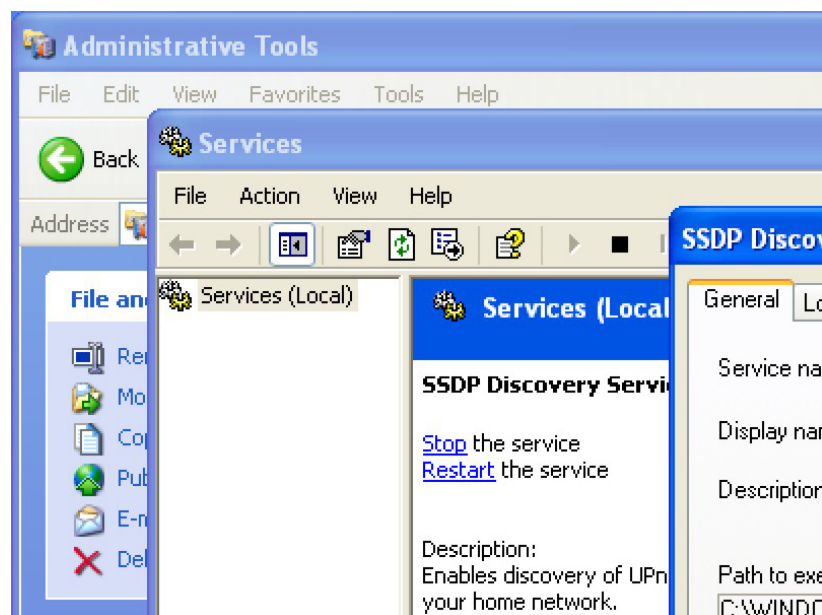
Windows XP

Go to "**Start > Control panel > Add or Remove Programs > Change or Remove Programs > Window Components Wizard > Networking Services**" and check that "**Universal Plug and Play**" is selected.

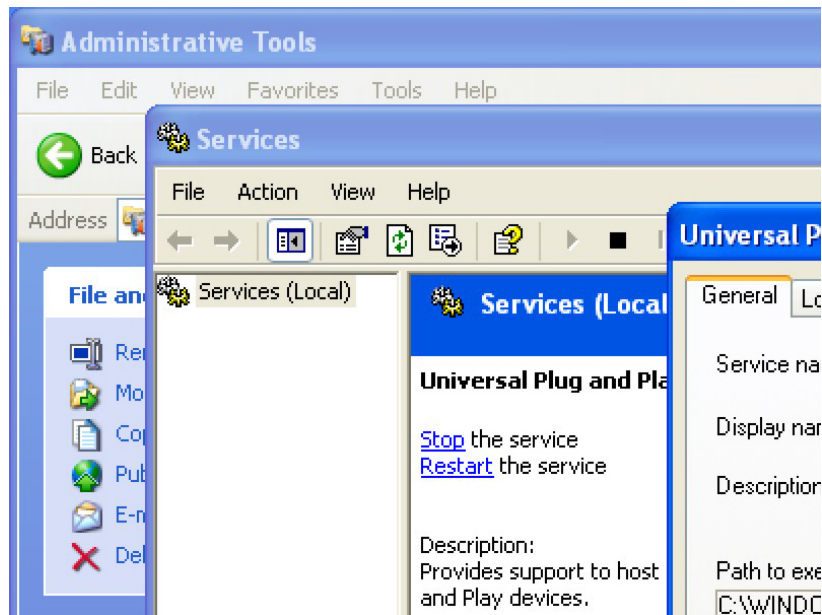


Go to "**Start > Control panel > Administrative Tools > Services**" and start and set as "**Automatic**" the following services:

– SSDP Discovery Service

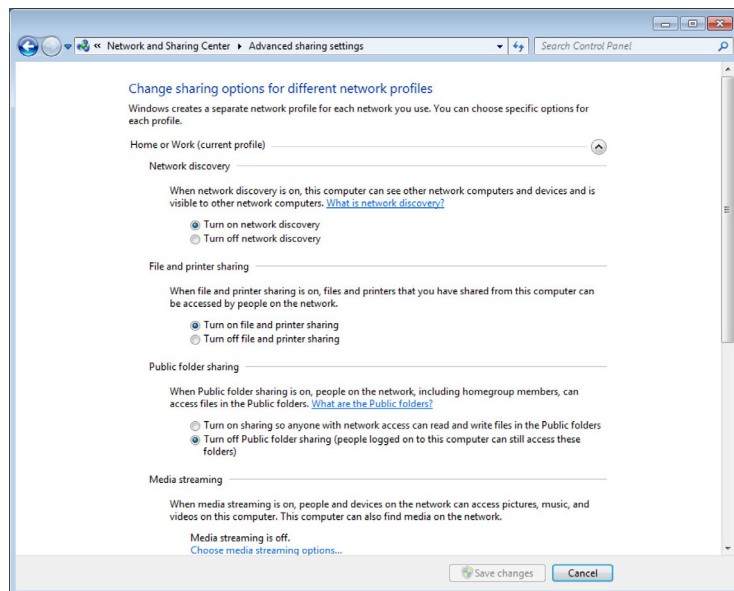


– UPNP device host



Windows Vista/7

Go to "Start > Control panel > Network and Sharing Center > Change Advanced sharing settings" and activate "Turn on network discovery".



Then go to "Start > Control panel > Administrative Tools > Services" and start and set as "Automatic" the following services:

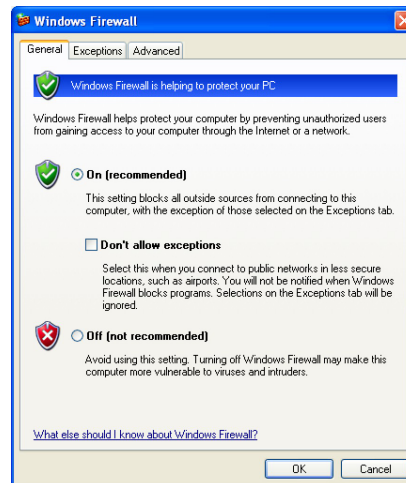
- SSDP Discovery Service
- UPNP device Host

5.2 How to enable firewall exceptions for TiTouchScreen

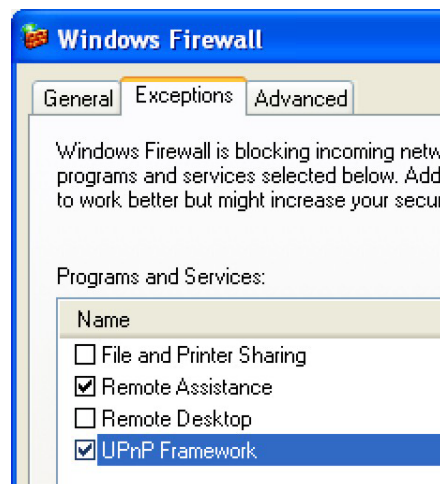
The following instructions refer to Windows Firewall.
The same procedure must be followed for other firewalls.

Windows XP

Go to "**Start > Control panel > Windows Firewall**" and check that Windows Firewall is Off or it is On with "**Don't allow exceptions**" option deselected.

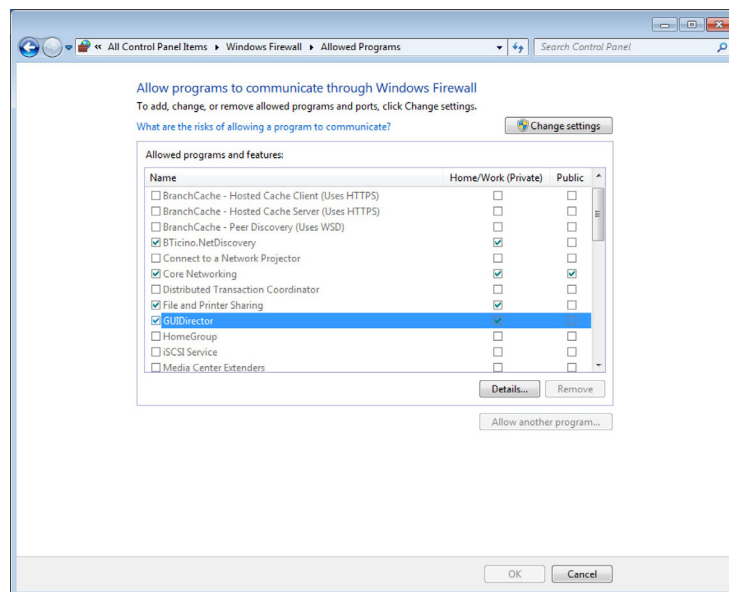


Then go under Exceptions tab and enable "**Framework UPnP**" and "**GUIDirector.exe**" (you must click "**Add Program...**" > "**Browser**" and select "**C:\Program Files\BTicino\TiTouchScreen_0100\GUIDirector.exe**").



Windows Vista/7

Go to **"Start > Control panel > Windows Firewall > Allows programs to communicate through Windows Firewall > Change settings"** and enable **"GUIDirector.exe"** and **"NetDiscovery.exe"** (you must click **"Allow another program..."** > **"Browser"** and select **"C:\Program Files\ BTicino\TiTouchScreen_0100\GUIDirector.exe"** for x86 platform or **"C:\ Program files\BTicino\TiTouchScreen_0100\BTicino.NetDiscovery.exe"** for x64 platform). For both program you must enable **"Home/Work (Private)"** and **"Public"**.



BTicino SpA
Via Messina, 38
20154 Milano - Italy
www.bticino.com